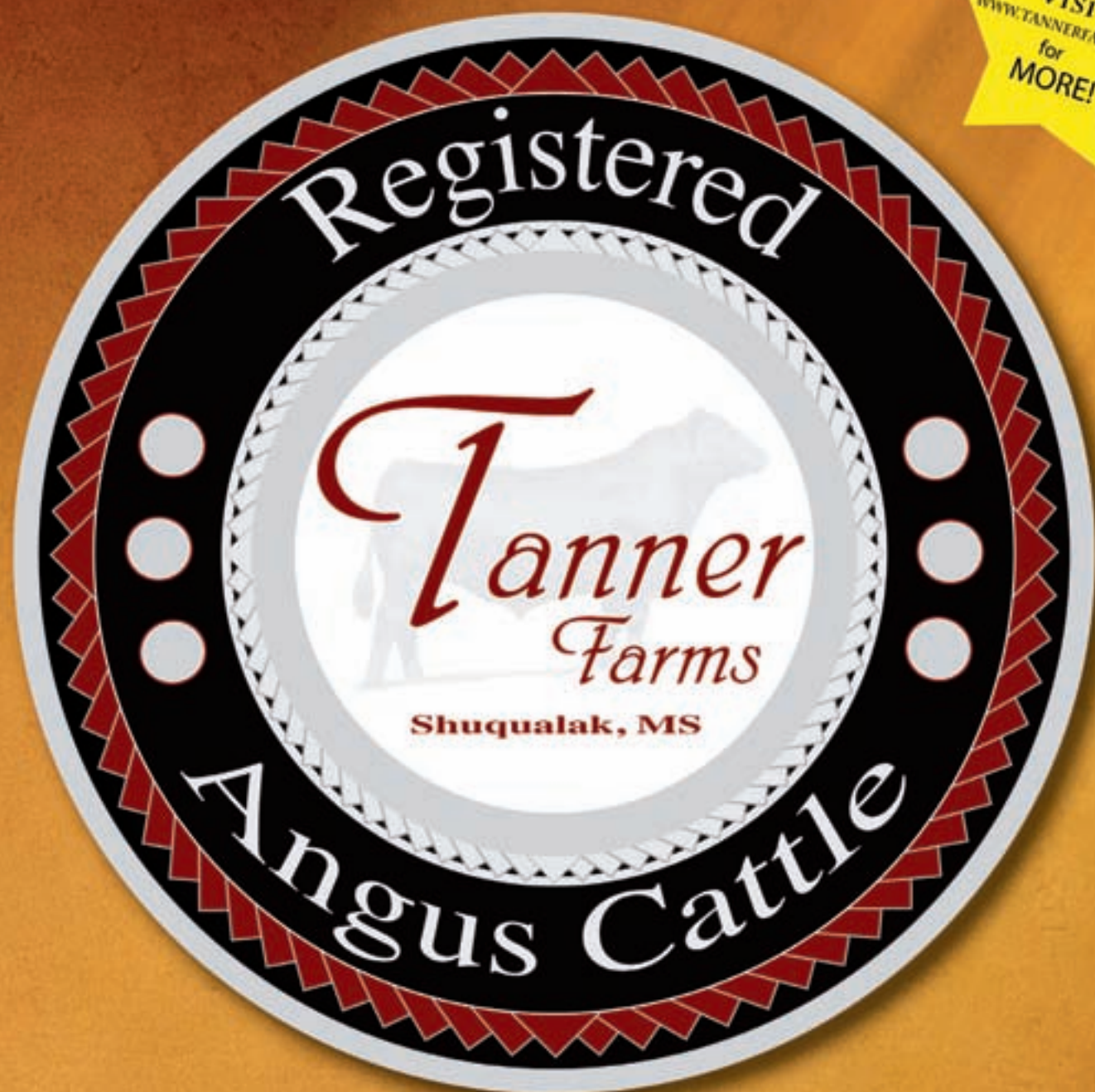


# PASTURE PERFORMANCE-TESTED ANGUS BULL SALE

VISIT  
[WWW.TANNERFARMS.NET](http://WWW.TANNERFARMS.NET)  
for  
MORE!



SATURDAY • OCTOBER 26, 2013 • NOON

- THE SOUTHEAST'S LARGEST ANGUS SEEDSTOCK SOURCE -





Paisley Tanner



Penny Tanner



Erin & Drew Tanner, Gary & Lorrie Tanner,  
Eric & Amanda Roberts



Sophia Roberts



Amelia Roberts



Janie & Harvey  
Koehne



Tim, Tim, Kari, Autum, Sari, Slade  
Hardy Family







Dear Friends,

It's our pleasure to welcome you and your family to join us on Saturday, October 26, 2013, for our **Tanner Farms Pasture Performance-Tested Angus Bull Sale**. We're excited to bring you this group of 125 coming two-year olds who are soundness tested, guaranteed fertile, and part of our certified herd. All sell with a 100% guarantee.

Because these bulls are born and raised on our Mississippi farm they are accustomed to the heat and humidity of our Southern environment. They're raised on a forage-based ration and performance tested to see how well they grow and perform. Non-performers are culled so we only offer you bulls that will have a strong positive impact on your operation and your bottom line. They are bred and built for growth with maximum feed efficiency. We also breed for strong maternal characteristics because we want to produce daughters with good milking ability, fertility and longevity. This is also a quiet group of bulls and we are walking through them daily. This year all our sale bulls have been tested for "Trich", a venereal disease which causes cows to abort or become infertile. This disease can spread throughout the herd and can significantly impact a calf crop. All our bulls sell disease free. You can release these bulls into your herd with confidence because they are also soundness tested at 13 months and again just prior to the sale.

Whether you are looking for a calving ease bull for heifers or a bull for a mature cow herd we should have a bull to meet your specific criteria. We are happy to offer personalized service to our customers and will help you select a bull that will best meet your specific needs. **We also offer free delivery with the purchase of three or more bulls.** Call or come by the farm and we will be glad to assist you.

We want to say a special "Thank you" to our past customers! We appreciate you and thank you for placing your confidence in our program. Your recommendation and the calves you produce are our best form of advertising.

Our entire family invites you to join us on sale day for good food, fellowship, and warm Southern hospitality. Come early and join us for a country breakfast at 8:00 a.m. and look over the cattle. Lunch will be served at 10:45.

Hope to see you there!

*Gary & Lorie Tanner*

Checkout [www.tannerfarms.net](http://www.tannerfarms.net)  
FOR VIDEO



*Tanner  
Farms*

Gary Tanner (cell)601-319-6610  
Harvey Koehne (cell)601-319-6640  
Tim Hardy (cell)601-319-7894  
Office 601-477-2202



# PASTURE PERFORMANCE-TESTED ANGUS BULL SALE

NOON • SATURDAY • OCTOBER 26, 2013

SHUQUALAK, MISSISSIPPI

## SALE DAY PHONES:

Sale Barn: (662) 793-0073; (662) 793-0074  
Kurt Schaff: (816) 520-6447  
Gary Tanner: (601) 319-6610  
Harvey Koehne: (601) 319-6640  
Tim Hardy: (601) 319-7894

## AUCTIONEER:

Jarvene Schackelford

## SALE MANAGER:

American Angus Hall of Fame - (816) 532-0811

Tom Burke Kurt Schaff Jeremy Haag  
(816) 853-2697 (816) 520-6447 (816) 516-1309

Buyers unable to attend the sale may send their bids to the Sale Manager, Regional Manager, Field Representatives or Auctioneer.

## LIVESTOCK PUBLICATION REPRESENTATIVES:

Richard Dyar, *Angus Journal*  
Bruce Bradley, Special Assignment  
Derron Heldermon, Special Assignment  
LeAnn Peters, *Cattle Business in Mississippi*

**TERMS AND CONDITIONS:** Cattle will sell under the suggested Terms and Conditions of the American Angus Association ([http://www.angus.org/Pub/suggested\\_sale\\_terms.pdf](http://www.angus.org/Pub/suggested_sale_terms.pdf)). All bulls are guaranteed fertile through the first breeding season. All cattle must be paid for prior to loading unless prior arrangements have been made with Tanner Farms.

**SUPPLEMENTAL INFORMATION:** A supplemental sheet will be available sale day with complete and up-to-date information. Announcements from the auction block take precedence over sale book information. All registered lots are AM, NH, CA, M1 and D2 free. Some have potential DD status.

**HERD HEALTH:** All cattle will be accompanied by proper health certificates for immediate shipment.

**TRUCKING:** Truckers believed to be reliable will be available to assist you in shipping your purchases.

**LIVESTOCK MORTALITY INSURANCE:** To properly insure your investment, James Bessler will be available to assist you with mortality insurance. (815) 762-2641

**FOOD AND REFRESHMENTS:** A full country breakfast will be served beginning at 8 a.m. with lunch beginning at 10:45 a.m.

Sale book prepared by the Sale Managers,  
TOM BURKE, KURT SCHAFF, JEREMY HAAG,  
AMERICAN ANGUS HALL OF FAME,  
At the WORLD ANGUS HEADQUARTERS,  
PO Box 660, Smithville, MO 64089-0660.  
Phone: (816) 532-0811. Fax: (816) 532-0851.  
E-Mail: [angushall@earthlink.net](mailto:angushall@earthlink.net) - [www.angushall.com](http://www.angushall.com)



Visit the *Angus Journal*® Web site, [www.angusjournal.com](http://www.angusjournal.com), and view this sale book online. *References: American Angus Association®, AHIR®, Angus-Source®, CAB®, Pathfinder®.* EPDs current as of August 30, 2013. Updated EPDs can be viewed online at [www.angus.org](http://www.angus.org).

## COMMENTS FROM THE SALE MANAGER:

### *The Southeast's Largest Seedstock Source!*

It is a genuine pleasure and privilege to work with Gary and Lorrie Tanner, their family and crew in the presentation of the Tanner Farms Pasture Performance-Tested Angus Bull Sale, set for Saturday, October 26, 2013. An outstanding set of strong age bulls will sell. These bulls are backed by industry leading AI sires and many are from some of the recognized cow families of the breed. The depth and dimension of this sale offering is impressive. These bulls will be lean and ready to go to work. Plan now to be on hand for this exciting event. Everyone at Tanner Farms looks forward to having you as their guest for this special event. Please feel free to call on them or on any of us at the American Angus Hall of Fame, if we can be of assistance in any way.

Sincerely,



TOM BURKE  
(816) 853-2697



KURT SCHAFF  
(816) 520-6447



JEREMY HAAG  
(816) 516-1309

Tom Burke

Kurt Schaff

Jeremy Haag



## DIRECTIONS TO THE SALE SITE:

### Directions to Farm from Meridian:

Driving north on Interstate 59, exit right at Exit 157B - Macon and Hwy. 45 North. Continue on 45 North for 31 miles until you reach the 4-way stop at Scooba. Continue through the 4-way stop and in 9 miles turn right onto Field Road. Tanner Farms Sale Barn is located 1 mile on the left.

### Directions to Farm from Columbus:

Take US 82 E to US 45 S toward Macon. Drive south on US-45 S for approximately 30 miles until you reach the 4-way stop at Macon. Continue through the 4-way stop on 45 South for 12 miles. You will see signs for the town of Shuqualak, continue on US-45 South for 1/4 mile. Turn left and cross over. Tanner Farms Sale Barn is located 1 mile on the left on Field Road.

## ACCOMMODATIONS:

### Oak Tree Inn -

Located 10 minutes north of Farm.  
12710 Hwy. 45 and Hwy. 14 Bypass  
Macon, MS 39341  
(662) 726-4334

### Wyngate by Wyndham -

Located 45 minutes north of Farm  
120 Brickerton Street  
Columbus, MS 39701  
(662) 327-9999

### Hampton Inn -

Located 45 minutes south of Farm  
103 US Hwy. 11 and 80  
Meridian, MS 39302  
(601) 483-3000

### Drury Inn & Suites -

Located 45 minutes south of Farm  
1121 Hwy. 11 and 80  
Meridian, MS 39301  
(601) 483-5570

## AIRPORT INFORMATION:

### Meridian Regional Airport -

Located 45 minutes south of Farm  
2811 Airport Blvd. South  
Meridian, MS 39307  
(601) 482-0364  
Rental Car Service Available

### Golden Triangle Regional Airport -

Located 45 minutes north of Farm  
2080 Airport Road  
Columbus, MS 39701  
(662) 327-4422  
Rental Car Service Available

### Jackson-Evers International Airport - Macon Municipal VFR Airport -

Located 2.5 hours west of Farm  
100 International Drive #300  
Jackson, MS 39208  
(601) 939-5631  
Rental Car Service Available

Located 10 minutes north of Farm  
Contact John Peters or Pam Norris for  
landing authorization  
(662) 361-1469  
105 W. Pulaski Street  
Macon, MS 39341  
(662) 726-5847  
There is no rental service available.  
Call prior to sale day and  
arrangements will be made with the  
farm for someone to pick you up.

\*\*If you need further assistance with any travel arrangements  
contact Tanner Farms\*\*



Gary and Lorrie Tanner

*Purchasing and restoring a farm dating back to 1845, we began to expand our registered Angus program. Much work had to be done to bring this once-thriving farm back to life. For almost thirty years, the farm and plantation home had lain fallow and unoccupied. Fields were reclaimed, fences and ponds built and repaired, and grasses and corn were planted where long ago cotton had once been king. The lush green hills today bear witness to God's redemptive hand on this land just as He works in the lives of people. The Lord blessed us in this undertaking; may He be honored and glorified in all we do!*

*Psalm 34:1-10*

*Plan to also attend the*  
**Tanner Farms Angus and SimAngus Bull Sale**  
**Selling 195 Coming Two-Year Olds**  
**Saturday • November 30, 2013 • Noon**  
**Wiggins Farm Location**  
**Wiggins, Mississippi**



# Tanner Final Answer Bulls



Tanner Final Answer A938 - Lot 1

1

## TANNER FINAL ANSWER A938

Birth Date: 12-27-2011

Bull 17283872

Tattoo: A938

#Sitz Traveler 8180 [PDF]  
SAV Final Answer 0035 [PDF-RDF]  
#13592905 SAV Emulous 8145

#GDAR Traveler 71 [PDF]  
Sitz Everelda Entense 1137  
#Bon View Bando 598 [PDF]  
SAV Sky Emulous 2124

+SAV Bismarck 5682 [PDF-RDF]  
Tanner Blackcap 0071  
16657295 +Bricton Blackcap 7031

#+GAR Grid Maker [PDF]  
SAV Abigale 0451  
#CA Future Direction 5321 [PDF]  
+Sherrod Blackcap 0190

	BW	REA	205-Day	FAT	365-Day	\$B
CWT	+19					
MARB		+51				
	67	+65				
	701	+043				
BEPD	WEPD	YEPD	MILK	365-Day	\$B	
+3	.35	+56	.27	+94	.27	+26
			.21	1015		+63.69

★ This outstanding herd sire prospect combines the popular and proven sires, SAV Final Answer 0035 and SAV Bismarck 5682, both breed leaders for annual registrations with elite calving-ease, balanced performance and maternal strength.

★ This bull records individual weaning and yearling ratios of 106 and 101, respectively, combined with an individual ribeye ratio of 104 as his dam's first calf.

★ Recommended for heifers.



Tanner Final Answer 2160 - Lot 3



SAV Final Answer 0035 - Featuring his sons.

2

## TANNER FINAL ANSWER 2129

Birth Date: 1-14-2012

Bull 17288344

Tattoo: 2129

#Sitz Traveler 8180 [PDF]  
SAV Final Answer 0035 [PDF-RDF]  
#13592905 SAV Emulous 8145

#GDAR Traveler 71 [PDF]  
Sitz Everelda Entense 1137  
#Bon View Bando 598 [PDF]  
SAV Sky Emulous 2124

Whitestone BLK Bourbon W036  
#15724973 Circle A Black Bourbon 5096

#GAR Precision 1680  
+GAR Ext 4927  
#+WCC Special Design L309 [PDF]  
MAF Black Bourbon 0055

	BW	REA	205-Day	FAT	365-Day	\$B
CWT	+25					
MARB		+50				
	77	+56				
	583	+059				
BEPD	WEPD	YEPD	MILK	365-Day	\$B	
+9	.38	+53	.29	+99	.29	+27
			.22	1037		+66.36

★ A balanced-trait son of SAV Final Answer 0035 from a Pathfinder Dam with a progeny weaning ratio of 106 on four calves and a progeny yearling ratio of 106 combined with progeny IMF and ribeye ratios of 102 and 104, respectively, on three head.

★ Recommended for heifers.

3

## TANNER FINAL ANSWER 2160

Birth Date: 1-30-2012

Bull 17288354

Tattoo: 2160

#Sitz Traveler 8180 [PDF]  
SAV Final Answer 0035 [PDF-RDF]  
#13592905 SAV Emulous 8145

#GDAR Traveler 71 [PDF]  
Sitz Everelda Entense 1137  
#Bon View Bando 598 [PDF]  
SAV Sky Emulous 2124

Harvey's Right Girl 536  
15533629 +Harvey's Hy Pride 237

#N Bar Emulation EXT [PDF]  
Leachman Erica 0025  
#Whitestone Widespread MB  
Hyline Pride 849

	BW	REA	205-Day	FAT	365-Day	\$B
CWT	+25					
MARB		+49				
	68	+31				
	565	+073				
BEPD	WEPD	YEPD	MILK	365-Day	\$B	
+5	.37	+51	.29	+96	.29	+23
			.23	1010		+59.66

★ A picture-perfect son of SAV Final Answer 0035 with a highly-proven pedigree and an individual birth ratio of 86 combined with an individual yearling ratio of 102 and individual IMF and ribeye ratios of 112 and 104, respectively.

★ The dam of this bull has progeny weaning and yearling ratios of 104 and 107, respectively, combined with a progeny IMF ratio of 128 on five calves.

★ Recommended for heifers.

# Tanner Final Answer Bulls



Tanner Final Answer A933 - Lot 4

4

## TANNER FINAL ANSWER A933

Birth Date: 12-26-2011

Bull 17283859

Tattoo: A933

#Sitz Traveler 8180 [PDF]	#GDAR Traveler 71 [PDF]	CWT
SAV Final Answer 0035 [PDF-RDF]	Sitz Everelda Entense 1137	+11
#13592905 SAV Emulous 8145	#Bon View Bando 598 [PDF]	MARB
	SAV Sky Emulous 2124	+54
#SS Objective T510 OT26 [PDF]	#SS Traveler 6807 T510 [PDF]	BW
Tanner Queen Mother 963Y	SS Miss Rita R011 7R8	59
16689284 Tanner Queen Mother 166	+TPF Right Time E573	205-Day
	Tanner Queen Mother 623	644
		FAT
		+053
		\$B
BEPD	WEPD	YEPD
-1.3	.37	+53
.28	.94	.28
.25	.21	1033
		+53.10

- ★ An impressive low birth weight bull with outstanding EPDs by SAV Final Answer 0035.
- ★ This bull combines an individual birth ratio of 90 with individual weaning and yearling ratios of 98 and 103, respectively, and individual IMF and ribeye ratios of 101 and 103, respectively, as his dam's first calf.
- ★ Recommended for heifers.

5

## TANNER FINAL ANSWER 2110

Birth Date: 1-7-2012

Bull 17285223

Tattoo: 2110

#Sitz Traveler 8180 [PDF]	#GDAR Traveler 71 [PDF]	CWT
SAV Final Answer 0035 [PDF-RDF]	Sitz Everelda Entense 1137	I+14
#13592905 SAV Emulous 8145	#Bon View Bando 598 [PDF]	MARB
	SAV Sky Emulous 2124	I+.68
#SS Objective T510 OT26 [PDF]	#SS Traveler 6807 T510 [PDF]	BW
Whitestone Ext X800	SS Miss Rita R011 7R8	87
+16078479 +GAR Ext 4927	#N Bar Emulation EXT [PDF]	205-Day
	GAR Traveler 641	658
		FAT
		I+.057
		\$B
BEPD	WEPD	YEPD
I+.6	.05	I+101
.05	.05	.05
.27	.05	.21
		1226
		+61.06

- ★ A three-quarter brother to the previous bull, sired by SAV Final Answer 0035, from a dam by SS Objective T510 OT26.
- ★ The dam of this bull records progeny weaning and yearling ratios of 102 and 103, respectively, combined with a progeny IMF ratio of 122 on two calves and she is a maternal sister to GAR Retail Product.
- ★ Recommended for heifers.



Tanner Final Answer 2110 - Lot 5



Tanner Final Answer A930 - Lot 6

6

## TANNER FINAL ANSWER A930

Birth Date: 12-25-2011

Bull 17283858

Tattoo: A930

#Sitz Traveler 8180 [PDF]	#GDAR Traveler 71 [PDF]	CWT
SAV Final Answer 0035 [PDF-RDF]	Sitz Everelda Entense 1137	+21
#13592905 SAV Emulous 8145	#Bon View Bando 598 [PDF]	MARB
	SAV Sky Emulous 2124	+54
Koupals B&B Traveler 4062	#SAV 8180 Traveler 004 [PDF-RDF]	BW
Tanner Blacklass 309Z	Koupal Voltage 5016	50
16706320 Circle G Blacklass 5113	#GAR Retail Product [PDF]	205-Day
	#+Masterfare Blacklass 2217	650
		FAT
		+056
		\$B
BEPD	WEPD	YEPD
-1.7	.36	+53
.28	.92	.28
.24	.20	1064
		+62.80

- ★ A low birth weight, calving-ease bull by SAV Final Answer 0035, with individual IMF and ribeye ratios of 103 and 105, respectively, while balancing an individual birth ratio of 78 with individual weaning and yearling ratios of 98 and 105, respectively, as his dam's first calf in the AHIR program.
- ★ Recommended for heifers.

7

## TANNER FINAL ANSWER 2100

Birth Date: 1-1-2012

Bull 17283855

Tattoo: 2100

#Sitz Traveler 8180 [PDF]	#GDAR Traveler 71 [PDF]	CWT
SAV Final Answer 0035 [PDF-RDF]	Sitz Everelda Entense 1137	+22
#13592905 SAV Emulous 8145	#Bon View Bando 598 [PDF]	MARB
	SAV Sky Emulous 2124	+55
#CRA Bextor 872 5205 608 [PDF]	#BAR Ext Traveler 205 [PDF]	BW
Tanner Ester 122Z	Cra Lady Jaye 608 498 S Easy	62
16713321 Tanner Ester X827	+Whitestone Get R Done U003	205-Day
	Tanner Ester 626	811
		FAT
		+059
		\$B
BEPD	WEPD	YEPD
+3	.37	+62
.28	.28	.28
.31	.21	.21
		1229
		+67.48

- ★ A low birth, high-performance son of the Pathfinder Sire SAV Final Answer 0035, combining an individual birth ratio of 94 with individual weaning and yearling ratios of 123 and 122, respectively, and individual IMF and ribeye ratios of 104 and 128, respectively, as his dam's first calf.
- ★ Recommended for heifers.



Tanner Final Answer 2100 - Lot 7



# Tanner Final Answer Bulls



Tanner Final Answer 2253 - Lot 8

8

## TANNER FINAL ANSWER 2253

Birth Date: 2-18-2012

Bull 17320275

Tattoo: 2253

#Sitz Traveler 8180 [PDF]	#GDAR Traveler 71 [PDF]	CWT
SAV Final Answer 0035 [PDF-RDF]	Sitz Everelda Entense 1137	+23
#13592905 SAV Emulous 8145	#Bon View Bando 598 [PDF]	MARB
	SAV Sky Emulous 2124	+63
+BT Crossover 758N [PDF]	#CA Future Direction 5321 [PDF]	BW
Tanner Rita Y452	BT Royal Pride 237G	78
+16410856 +Boyd 1332 Rita 5114	#N Bar Emulation EXT [PDF]	REA
	+GAR 1407 New Design 1332	+63
		205-Day
		FAT
		721
		+047
		365-Day
		\$B
		1158
		+71.02

- ★ A valuable calving-ease prospect with balanced EPDs, by SAV Final Answer 0035.
- ★ This bull records individual weaning and yearling ratios of 111 and 108, respectively, combined with individual IMF and ribeye ratios of 114 and 105, respectively, from a dam who combines a progeny birth ratio of 87 with progeny weaning and yearling ratios of 105 and progeny IMF and ribeye ratios of 108 and 100, respectively, on two calves.
- ★ Recommended for heifers.

9

## TANNER FINAL ANSWER 2325

Birth Date: 3-5-2012

Bull 17320288

Tattoo: 2325

#Sitz Traveler 8180 [PDF]	#GDAR Traveler 71 [PDF]	CWT
SAV Final Answer 0035 [PDF-RDF]	Sitz Everelda Entense 1137	+16
#13592905 SAV Emulous 8145	#Bon View Bando 598 [PDF]	MARB
	SAV Sky Emulous 2124	+67
#Basin Franchise P142 [PDF]	#CA Future Direction 5321 [PDF]	BW
Tanner Rita 2409 X187	Basin Chloe 812L	77
+16074702 GAR Prime Time 2409	#Gardens Prime Time	REA
	+GAR Ext 327	+54
		205-Day
		FAT
		694
		+068
		365-Day
		\$B
		968
		+60.45

- ★ This low birth weight son of SAV Final Answer 0035 has an individual birth ratio of 97 combined with an individual weaning ratio of 107, from a dam with a progeny weaning ratio of 105 on two calves, coupled with progeny IMF and ribeye ratios of 114 and 104, respectively, on five head, descending from the high income-producing GAR Prime Time 2409.
- ★ Recommended for heifers.



Tanner Final Answer 2325 - Lot 9



Tanner Final Answer A939 - Lot 10

10

## TANNER FINAL ANSWER A939

Birth Date: 12-28-2011

Bull 17283873

Tattoo: A939

#Sitz Traveler 8180 [PDF]	#GDAR Traveler 71 [PDF]	CWT
SAV Final Answer 0035 [PDF-RDF]	Sitz Everelda Entense 1137	+25
#13592905 SAV Emulous 8145	#Bon View Bando 598 [PDF]	MARB
	SAV Sky Emulous 2124	+48
Tanner Foresight 608	#Woodhill Foresight [PDF]	BW
Tanner Everelda Entense 906Y	Bricton Jestress 2049	75
16626398 +Tanner Everelda Entense W779	#+GAR Exaltation 3144	REA
	+HF Everelda Entense 080	+46
		205-Day
		FAT
		708
		+052
		365-Day
		\$B
		1057
		+64.78

- ★ This popular son of SAV Final Answer 0035 has individual weaning and yearling ratios of 107 and 105, respectively, as his dam's first calf and is backed by the Everelda Entense family.
- ★ Recommended for heifers.

11

## TANNER FINAL ANSWER A942

Birth Date: 12-28-2011

Bull 17283864

Tattoo: A942

#Sitz Traveler 8180 [PDF]	#GDAR Traveler 71 [PDF]	CWT
SAV Final Answer 0035 [PDF-RDF]	Sitz Everelda Entense 1137	+17
#13592905 SAV Emulous 8145	#Bon View Bando 598 [PDF]	MARB
	SAV Sky Emulous 2124	+39
#BC Matrix 4132 [PDF]	#+OCC Emblazon 854E [PDF]	BW
Tanner Queen Kimberly 153Z	CAF Pure Pride Ext 99	89
+16679119 +Alberda Queen Kimberly 111	#VDAR New Trend 315 [PDF]	REA
	#Alberda Queen Kimberly 169	+48
		205-Day
		FAT
		756
		+061
		365-Day
		\$B
		1169
		+53.42

- ★ This high-indexing bull has individual weaning and yearling ratios of 115 and 116, respectively, along with an individual ribeye ratio of 110 as his dam's first calf, stemming from a grandam who is a full sister to the dam of Alberda Traveler 416.



Tanner Final Answer A942 - Lot 11



# Tanner Final Answer Bulls

12

## TANNER FINAL ANSWER A957

Birth Date: 12-31-2011

Bull 17283856

Tattoo: A957

#Sitz Traveler 8180 [PDF]	#GDAR Traveler 71 [PDF]	<b>CWT</b>
SAV Final Answer 0035 [PDF-RDF]	Sitz Everelda Entense 1137	<b>+19</b>
#13592905 SAV Emulous 8145	#Bon View Bando 598 [PDF]	<b>MARB</b>
	SAV Sky Emulous 2124	<b>+53</b>

+SAV Advancer 7909	#SAV Net Worth 4200 [PDF]	<b>BW</b>
Tanner Forever Lady 301Z	#SAV Emblynette 7319	<b>50</b>
16708952 +EF Forever Lady 1255	#Bon View New Design 878 [PDF]	<b>205-Day</b>
	+EF Forever Lady 5102	<b>FAT</b>
		<b>631</b>
		<b>+057</b>

BEPD	WEPD	YEPP	MILK	365-Day	\$B
-2.8	.36	+45	.28	+78	.28
				+26	.20
				921	+59.17

- ★ An ultra low birth weight, calving-ease prospect with a modest individual birth ratio of 78.
- ★ This son of the Pathfinder Sire SAV Final Answer 0035 was produced as the first calf from a dam by SAV Advancer 7909.
- ★ Recommended for heifers.

13

## TANNER FINAL ANSWER A954

Birth Date: 12-31-2011

Bull 17288361

Tattoo: A954

#Sitz Traveler 8180 [PDF]	#GDAR Traveler 71 [PDF]	<b>CWT</b>
SAV Final Answer 0035 [PDF-RDF]	Sitz Everelda Entense 1137	<b>+21</b>
#13592905 SAV Emulous 8145	#Bon View Bando 598 [PDF]	<b>MARB</b>
	SAV Sky Emulous 2124	<b>+59</b>

#+Rito 2 878 of 2536 BVND 878	#Bon View New Design 878 [PDF]	<b>BW</b>
Mindemann Pride 823	GAR Precision 2536	<b>90</b>
#16078756 Mindemann Pride 614	#+EXAR New Look 2971 [PDF]	<b>205-Day</b>
	+Acf Pride 7172	<b>FAT</b>
		<b>694</b>
		<b>+040</b>

BEPD	WEPD	YEPP	MILK	365-Day	\$B
+2.5	.36	+59	.28	+94	.28
				+28	.22
				1056	+67.08

- ★ A high-performance son of the Pathfinder Sire SAV Final Answer 0035 with individual weaning and yearling ratios of 118 and 107, respectively, and individual IMF and ribeye ratios of 106 and 110, respectively, from a Pathfinder Dam with a progeny weaning ratio of 111 on three calves and a progeny yearling ratio of 106 on two head along with progeny IMF and ribeye ratios of 112 and 109, respectively, on three head.

14

## TANNER FINAL ANSWER 2002

Birth Date: 1-1-2012

Bull 17242837

Tattoo: 2002

#Sitz Traveler 8180 [PDF]	#GDAR Traveler 71 [PDF]	<b>CWT</b>
SAV Final Answer 0035 [PDF-RDF]	Sitz Everelda Entense 1137	<b>+16</b>
#13592905 SAV Emulous 8145	#Bon View Bando 598 [PDF]	<b>MARB</b>
	SAV Sky Emulous 2124	<b>+60</b>

#Bon View New Design 1407 [PDF]	#B/R New Design 036 [PDF]	<b>BW</b>
SandPoint Rita 6814	Bon View Pride 664	<b>65</b>
+15687966 KMK Rita J352	#GAR Precision 1680	<b>205-Day</b>
	+GAR Ext 614	<b>FAT</b>
		<b>624</b>
		<b>+046</b>

BEPD	WEPD	YEPP	MILK	365-Day	\$B
-1.8	.36	+53	.28	+92	.28
				+27	.23
				1032	+62.94

- ★ This low birth weight herd sire prospect has an individual birth ratio of 82 combined with individual weaning and yearling ratios of 106 and 105, respectively, and an individual ribeye ratio of 110.
- ★ The dam of this bull has a progeny birth ratio of 95 combined with progeny weaning and yearling ratios of 108 and 102, respectively, and progeny IMF and ribeye ratios of 106 and 114, respectively, on two calves.
- ★ Recommended for heifers.



Tanner Final Answer 2002 - Lot 14



Tanner Final Answer A957 - Lot 12

15

## TANNER FINAL ANSWER 2312

Birth Date: 3-2-2012

Bull 17320284

Tattoo: 2312

#Sitz Traveler 8180 [PDF]	#GDAR Traveler 71 [PDF]	<b>CWT</b>
SAV Final Answer 0035 [PDF-RDF]	Sitz Everelda Entense 1137	<b>+23</b>
#13592905 SAV Emulous 8145	#Bon View Bando 598 [PDF]	<b>MARB</b>
	SAV Sky Emulous 2124	<b>+70</b>

#+B/R New Frontier 095 [PDF]	#B/R New Design 036 [PDF]	<b>BW</b>
Tanner Lady Lucy 718	White Fence Pride H1	<b>71</b>
15659051 Lucy P008 of Whitestone	#+Leachman Right Time	<b>205-Day</b>
	Whitstone Lady Lucy M016	<b>FAT</b>
		<b>669</b>
		<b>+050</b>

BEPD	WEPD	YEPP	MILK	365-Day	\$B
-1.0	.37	+51	.29	+89	.28
				+21	.22
				1071	+68.65

- ★ A low birth weight son of SAV Final Answer 0035 with a proven pedigree and an individual birth ratio of 89 combined with individual weaning and yearling ratios of 103 and 100, respectively, and individual IMF and ribeye ratios of 113 and 103, respectively.
- ★ Recommended for heifers.

16

## TANNER FINAL ANSWER 2130

Birth Date: 1-15-2012

Bull 17283861

Tattoo: 2130

#Sitz Traveler 8180 [PDF]	#GDAR Traveler 71 [PDF]	<b>CWT</b>
SAV Final Answer 0035 [PDF-RDF]	Sitz Everelda Entense 1137	<b>+22</b>
#13592905 SAV Emulous 8145	#Bon View Bando 598 [PDF]	<b>MARB</b>
	SAV Sky Emulous 2124	<b>+54</b>

#+GAR New Design 5050 [PDF]	#B/R New Design 036 [PDF]	<b>BW</b>
Tanner Rita 252Z	GAR Precision 706	<b>65</b>
16686058 Thistle Q8R5 of 8R5 2 878	#+Rito 2 878 of 2536 BVND 878	<b>205-Day</b>
	+TF Rita 8R5 of 1418	<b>FAT</b>
		<b>712</b>
		<b>+050</b>

BEPD	WEPD	YEPP	MILK	365-Day	\$B
+2	.36	+54	.28	+92	.28
				+29	.21
				978	+68.82

- ★ This son of SAV Final Answer 0035 has an individual birth ratio of 98 combined with an individual weaning ratio of 108 as his dam's first calf.
- ★ Recommended for heifers.



Tanner Final Answer 2130 - Lot 16

# Tanner Final Answer & Pioneer Bulls



Tanner Final Answer 2104 - Lot 17

## 17 TANNER FINAL ANSWER 2104

Birth Date: 1-3-2012

Bull 17283863

Tattoo: 2104

#Sitz Traveler 8180 [PDF]	#GDAR Traveler 71 [PDF]	CWT
SAV Final Answer 0035 [PDF-RDF]	Sitz Everelda Entense 1137	+25
#13592905 SAV Emulous 8145	#Bon View Bando 598 [PDF]	MARB
	SAV Sky Emulous 2124	+.52
+Whitstone Predestined X056	#GAR Predestined [PDF]	BW
Tanner Rachel 220Z	Bon View Gammer 85	57
16681002 Tanner Rachel T620	+Whitstone Tiger T159 [PDF]	205-Day
	+Martin Rachel E13	668
		REA
		+.45
		FAT
		1042
		365-Day
		1042
		\$B
		+.66.38

- ★ This low birth weight bull by SAV Final Answer 0035 has an individual birth ratio of 87 combined with individual weaning and yearling ratios of 101 and 103, respectively, and individual IMF and ribeye ratios of 101 and 102, respectively, as his dam's first calf.
- ★ Recommended for heifers.

## 18 TANNER FINAL ANSWER A917

Birth Date: 12-21-2011

Bull 17283862

Tattoo: A917

#Sitz Traveler 8180 [PDF]	#GDAR Traveler 71 [PDF]	CWT
SAV Final Answer 0035 [PDF-RDF]	Sitz Everelda Entense 1137	+20
#13592905 SAV Emulous 8145	#Bon View Bando 598 [PDF]	MARB
	SAV Sky Emulous 2124	+.61
+Whitstone Predestined X056	#GAR Predestined [PDF]	BW
Tanner Blackbird 248Z	Bon View Gammer 85	53
16681005 +EHF Blackbird 6256	#CA Future Direction 5321 [PDF]	205-Day
	+ACF Blackbird 0298	592
		REA
		+.47
		FAT
		1042
		365-Day
		1042
		\$B
		+.64.31

- ★ A three-quarter brother to the previous bull, sired by SAV Final Answer 0035.
- ★ This low birth weight bull recorded a modest individual birth ratio of 82 as his dam's first calf.
- ★ Recommended for heifers.



Tanner Final Answer A917 - Lot 18



Tanner Pioneer 2291 - Lot 19

## 19 TANNER PIONEER 2291

Birth Date: 2-24-2012

Bull +17308045

Tattoo: 2291

#SAV Final Answer 0035 [PDF-RDF]	#Sitz Traveler 8180 [PDF]	CWT
SAV Pioneer 7301 [PDF]	SAV Emulous 8145	+27
15688392 SAV Blackbird 5297	#+Boyd New Day 8005 [PDF]	MARB
	SAV Blackbird 1082	+.34
#+Leachman Right Time	#N Bar Emulation EXT [PDF]	BW
Whitstone Anita R270	Leachman Erica 0025	85
+14581597 RC Anita T Bando 918903	#Tehama Bando 155 [PDF]	205-Day
	RC Traveling Ann 8903	810
		REA
		+.51
		FAT
		1229
		365-Day
		1229
		\$B
		+.61.82

- ★ A high-indexing son of SAV Pioneer 7301 with individual weaning and yearling ratios of 112 and 114, respectively, combined with an individual ribeye ratio of 113, from a donor dam who records a progeny weaning ratio of 102 on three natural calves and a progeny IMF ratio of 105 on 35 head.
- ★ The dam of this bull is a maternal sister to BCC Bushwacker 41-93.

## 20 TANNER PIONEER 2232

Birth Date: 2-14-2012

Bull +17308042

Tattoo: 2232

#SAV Final Answer 0035 [PDF-RDF]	#Sitz Traveler 8180 [PDF]	CWT
SAV Pioneer 7301 [PDF]	SAV Emulous 8145	+23
15688392 SAV Blackbird 5297	#+Boyd New Day 8005 [PDF]	MARB
	SAV Blackbird 1082	+.34
#+Leachman Right Time	#N Bar Emulation EXT [PDF]	BW
Whitstone Anita R270	Leachman Erica 0025	73
+14581597 RC Anita T Bando 918903	#Tehama Bando 155 [PDF]	205-Day
	RC Traveling Ann 8903	737
		REA
		+.42
		FAT
		1103
		365-Day
		1103
		\$B
		+.58.75

- ★ A flush brother to the previous bull by SAV Final Answer 0035 with an individual birth ratio of 95 combined with individual weaning and yearling ratios of 102 and 103, respectively, from a donor dam with a progeny weaning ratio of 102 on three natural calves and a progeny IMF ratio of 105 on 35 head.
- ★ Recommended for heifers.



Tanner Pioneer 2232 - Lot 20



# Tanner Pioneer Bulls



Tanner Pioneer A925 - Lot 21

21

## TANNER PIONEER A925

Birth Date: 1-3-2012

Bull +17285251

Tattoo: A925

SAV Pioneer 7301 [PDF] #SAV Final Answer 0035 [PDF+PDF] #Sitz Traveler 8180 [PDF]  
15688392 SAV Blackbird 5297 SAV Emulous 8145  
#+Boyd New Day 8005 [PDF] SAV Blackbird 1082

SAV Blackbird 3155 #Bon View New Design 878 [PDF] #B/R New Design 036 [PDF]  
14455337 SAV Blackbird 1082 Bon View Gammer 85  
#+SAF 598 Bando 5175 [PDF] #SAV Blackbird 4036

CWT
+27
MARB
+32
REA
+71
FAT
+027
\$B
+66.58

BEPD	WEPD	YEPD	MILK	365-Day
1+2.3	.05	1+52	.05	1+95
.05	.05	1+33	.05	1049

- ★ This son of SAV Pioneer 7301 records an individual ribeye ratio of 112 and features a pedigree which is double-bred to the Blackbird family, tracing twice to SAV Blackbird 1082.
- ★ The donor dam of this bull has a progeny birth ratio of 99 combined with a progeny weaning ratio of 104 on four natural calves and a progeny ribeye ratio of 103 on 20 head, and she also produced the Canadian Farm Fair Grand Champion Bull, SAV Prodigy 8101.
- ★ This bull is from the same family that also produced SAV Record Harvest 2186, a feature of the record-setting 2013 SAV Sale, selected by Gary Tanner, and enrolled in the Genex/CRI AI Stud.



SAV Prodigy 8101 - Maternal brother to Lot 21.



SAV Blackbird 1082 - The grandam of Lot 21.



SAV Blackbird 3155 - The dam of Lot 21.



SAV Pioneer 7301 - From the same family as Lot 21.



SAV Record Harvest 2186 - From the same family as Lot 21.

# Tanner Pioneer Bulls



Tanner Pioneer 2128 - Lot 22

## 22 TANNER PIONEER 2128

Birth Date: 1-13-2012

Bull +17285207

Tattoo: 2128

#SAV Final Answer 0035 [PDF]	#Sitz Traveler 8180 [PDF]	CWT
SAV Pioneer 7301 [PDF]	SAV Emulous 8145	+30
15688392	SAV Blackbird 5297	MARB
	#+Boyd New Day 8005 [PDF]	+36
	SAV Blackbird 1082	REA
		87
#+Woodhill Foresight [PDF]	#Papa Forte 1921	205-Day
Sandpoint Blackcap 6886	Bon View Gammer 85	FAT
+15844093	#DHD Traveler 6807	595
	+GAR Ext 2114	+040
BEPD	WEPD	YEPD
I+1.6	.05	I+54
.05	I+99	.05
I+28	.05	I+28
.05	990	+70.33

- ★ A son of SAV Pioneer 7301, produced in the embryo program, with a pedigree stacked with leading cow families.
- ★ This bull records an individual ribeye ratio of 108.
- ★ Recommended for heifers.

## 23 TANNER PIONEER 2143

Birth Date: 1-18-2012

Bull 17288348

Tattoo: 2143

#SAV Final Answer 0035 [PDF]	#Sitz Traveler 8180 [PDF]	CWT
SAV Pioneer 7301 [PDF]	SAV Emulous 8145	+26
15688392	SAV Blackbird 5297	MARB
	#+Boyd New Day 8005 [PDF]	+33
	SAV Blackbird 1082	REA
		87
#+Whitestone Xception	#GAR Precision 1680	205-Day
Whitestone Zora W129	+Toebben Forever Lady 150H	FAT
15723923	#Hyline Right Time 338 [PDF]	550
	B&B Zora 5031	+063
	B&B Zora 1037	
BEPD	WEPD	YEPD
+2.6	.37	+48
.28	+85	.28
+30	.21	888
.21	888	+58.79

- ★ This bull is backed by the Genex/CRI sires, SAV Pioneer 7301 and SAV Final Answer 0035, from a dam with a progeny weaning ratio of 101 on three calves.



Tanner Pioneer A950 - Lot 27

## 24 TANNER PIONEER 2265

Birth Date: 2-28-2012

Bull 17320277

Tattoo: 2265

#SAV Final Answer 0035 [PDF]	#Sitz Traveler 8180 [PDF]	CWT
SAV Pioneer 7301 [PDF]	SAV Emulous 8145	+18
15688392	SAV Blackbird 5297	MARB
	#+Boyd New Day 8005 [PDF]	+42
	SAV Blackbird 1082	REA
		87
#BR Midland [PDF]	#Twin Valley Precision E161 [PDF]	205-Day
Tanner Queen Kimberly 794	BR Royal Lass 7036-19	FAT
+15724224	#VDAR New Trend 315 [PDF]	607
	#Alberda Queen Kimberly 169	+055
BEPD	WEPD	YEPD
+3.2	.36	+46
.28	+92	.29
+26	.22	1127
.22	1127	+55.00

- ★ This bull is the result of mating SAV Pioneer 7301 with a maternal sister to Alberda Traveler 416.
- ★ The dam records progeny weaning and yearling ratios of 102 on three calves.

## 25 TANNER PIONEER 2300

Birth Date: 3-1-2012

Bull 17320281

Tattoo: 2300

#SAV Final Answer 0035 [PDF]	#Sitz Traveler 8180 [PDF]	CWT
SAV Pioneer 7301 [PDF]	SAV Emulous 8145	+24
15688392	SAV Blackbird 5297	MARB
	#+Boyd New Day 8005 [PDF]	+43
	SAV Blackbird 1082	REA
		89
#GAR Retail Product [PDF]	#GAR Precision 1680	205-Day
Circle G Blackclass 5113	+GAR Ext 4927	FAT
15217501	#+Leachman Right Time	581
	KMK Blackclass 1281	+032
BEPD	WEPD	YEPD
+3.4	.37	+47
.29	+88	.29
+32	.22	994
.22	994	+68.83

- ★ This son of SAV Pioneer 7301 is from a dam with progeny weaning and yearling ratios of 106 and 100, respectively, combined with progeny IMF and ribeye ratios of 105 and 104, respectively, on four calves.

## 26 TANNER PIONEER 2157

Birth Date: 1-27-2012

Bull 17288352

Tattoo: 2157

#SAV Final Answer 0035 [PDF]	#Sitz Traveler 8180 [PDF]	CWT
SAV Pioneer 7301 [PDF]	SAV Emulous 8145	+20
15688392	SAV Blackbird 5297	MARB
	#+Boyd New Day 8005 [PDF]	+64
	SAV Blackbird 1082	REA
		80
#Bon View New Design 1407 [PDF]	#B/R New Design 036 [PDF]	205-Day
Whitestone Jonie 440R	Bon View Pride 664	FAT
#+14586061	#Rito 8E8 of 5H11 Traveler [PDF]	579
	#LB Joanie HP 9614	+045
BEPD	WEPD	YEPD
+2.1	.37	+50
.29	+89	.29
+31	.23	933
.23	933	+67.60

- ★ A moderate birth weight, high-maternal and top-scanning son of SAV Pioneer 7301, with an individual IMF ratio of 122.
- ★ The dam of this bull is a second-generation Pathfinder Dam with a progeny weaning ratio of 109 on seven calves and a progeny yearling ratio of 105 combined with a progeny IMF ratio of 105 on six head.

## 27 TANNER PIONEER A950

Birth Date: 12-30-2011

Bull 17283955

Tattoo: A950

#SAV Final Answer 0035 [PDF]	#Sitz Traveler 8180 [PDF]	CWT
SAV Pioneer 7301 [PDF]	SAV Emulous 8145	+39
15688392	SAV Blackbird 5297	MARB
	#+Boyd New Day 8005 [PDF]	+65
	SAV Blackbird 1082	REA
		59
+Whitestone Predestined X056	#GAR Predestined [PDF]	205-Day
Tanner Rita 257Z	Bon View Gammer 85	FAT
16690143	#+B/R New Frontier 095 [PDF]	666
	Rita P057 of Whitestone	+052
BEPD	WEPD	YEPD
+2	.36	+55
.27	+108	.27
+31	.19	1152
.19	1152	+82.42

- ★ A massive, low birth weight son of SAV Pioneer 7301 with an individual birth ratio of 90 combined with individual weaning and yearling ratios of 101 and 114, respectively, along with individual IMF and ribeye ratios of 129 and 104, respectively, produced as his dam's first calf.



# Tanner Angus Bulls

## 28 TANNER BRAND NAME 2113

Birth Date: 1-9-2012

Bull 17288340

Tattoo: 2113

SAV Brand Name 9115 [PDF] #+GAR Grid Maker [PDF] CWT  
16396519 #+SAV Blackcap May 5530 SAV Abigale 0451 +38  
#BCC Bushwacker 41-93 [PDF] MARB  
SAV May 7238 +.02

#Whitestone Widespread MB #N Bar Emulation EXT [PDF] BW REA  
Tanner Pride 767 MB Rachel 2173 77 +.54  
15660273 +Whitestone Pride M056 #+Gdar SVF Russ 184B 205-Day FAT  
+Finks Pride 6196 25 6148 546 +.017

BEPD	WEPD	YEPD	MILK	365-Day	\$B
+3.0	.37	+53	.28	+100	.27
				+26	.14
				996	+60.38

★ An impressive son of the Genex/CRI sire, SAV Brand Name 9115, the top-selling Lot 1 bull of the 2010 SAV Sale.

★ The dam of this bull has a progeny birth ratio of 98 combined with a progeny weaning ratio of 102 on three calves and a progeny yearling ratio of 110 on two head.

## 29 TANNER BRAND NAME 2111

Birth Date: 1-9-2012

Bull 17288338

Tattoo: 2111

SAV Brand Name 9115 [PDF] #+GAR Grid Maker [PDF] CWT  
16396519 #+SAV Blackcap May 5530 SAV Abigale 0451 +35  
#BCC Bushwacker 41-93 [PDF] MARB  
SAV May 7238 +.07

RAB-GAR Load Up 4049J [PDF] +GAR Maximum Payload 3674 BW REA  
RAB-GAR MS Load UP - 4870N +GAR Ext 721 89 +.72  
14749295 RAB-GAR MS Primetime 4642K #Gardens Prime Time 205-Day FAT  
+RAB-GAR MS 1489 - 4025H 602 +.021

BEPD	WEPD	YEPD	MILK	365-Day	\$B
+2.0	.38	+53	.30	+97	.29
				+27	.16
				1050	+62.63

★ A valuable breeding bull by SAV Brand Name 9115 with individual weaning and yearling ratios of 102 and 106, respectively, combined with an impressive individual ribeye ratio of 119.

★ This bull was produced as a natural calf from a donor dam who records progeny weaning and yearling ratios of 103 and 100, respectively, on six natural calves with 46 head evaluated by ultrasound and 15 daughters in production.

## 30 TANNER BISMARCK 2302

Birth Date: 3-1-2012

Bull 17320282

Tattoo: 2302

SAV Bismarck 5682 [PDF] #+GAR Grid Maker [PDF] CWT  
+15109865 SAV Abigale 0451 GAR Precision 2536 +26  
#Schoenes Fix It 826 [PDF] MARB  
SAV Abigale 6062 +.26

#JLB Exacto 416 [PDF] #GAR Precision 1680 BW REA  
FoxCross Ms Foreverlady 4001 +Brost Burgess 041 71 +.83  
+15353627 +Clifton Forever Lady 1044 #DHD Traveler 6807 205-Day FAT  
+TRA Simply Forever 549 643 +.006

BEPD	WEPD	YEPD	MILK	365-Day	\$B
+3	.36	+46	.28	+82	.28
				+25	.23
				1041	+67.67

★ A calving-ease prospect by the popular and proven SAV Bismarck 5682.

★ This bull combines a modest individual birth ratio of 89 with an impressive individual ribeye ratio of 112.

★ The dam of this bull has a progeny weaning ratio of 103 on six calves and a progeny yearling ratio of 108 combined with progeny IMF and ribeye ratios of 103 and 105, respectively, on four head.

★ Recommended for heifers.

## 31 TANNER BISMARCK 2230

Birth Date: 2-14-2012

Bull 17320258

Tattoo: 2230

SAV Bismarck 5682 [PDF] #+GAR Grid Maker [PDF] CWT  
+15109865 SAV Abigale 0451 GAR Precision 2536 +26  
#Schoenes Fix It 826 [PDF] MARB  
SAV Abigale 6062 +.35

HARB Pendleton 765 JH [PDF] #SAV Final Answer 0035 [PDF] BW REA  
Tanner Blackbird 9026 #HARB Black Lady 375 JH 77 +.57  
16456015 B&B Blackbird 7012 Koupal Max 503 205-Day FAT  
Beefland Blackbird 4012 809 +.033

BEPD	WEPD	YEPD	MILK	365-Day	\$B
+2.0	.36	+57	.28	+96	.24
				+29	.22
				1220	+64.64

★ This son of SAV Bismarck 5682 records an individual weaning ratio of 119, from a dam with a progeny weaning ratio of 121 and a progeny yearling ratio of 107 on two calves.



Tanner Brand Name 2113 - Lot 28

## 32 TANNER IRON MOUNTAIN 2209

Birth Date: 2-6-2012

Bull 17317550

Tattoo: 2209

SAV Iron Mountain 8066 [PDF] #TC Gridiron 258 [PDF] #+GAR Grid Maker [PDF] CWT  
16115617 SAV Madame Pride 3249 #TC Blackbird 7049 +32  
#SAV 8180 Traveler 004 [PDF] MARB  
SAV Madame Pride 8264 +.46

+Twin Valley Fix It 826 1080 #Schoenes Fix It 826 [PDF] BW REA  
Tanner Erica 703 Woodhill Evergreen 58-1303 90 +.36  
15659036 J and J 2289 NF Mr Donamere 919 205-Day FAT  
RCL Erica 289 705 +.024

BEPD	WEPD	YEPD	MILK	365-Day	\$B
+3.4	.36	+54	.27	+101	.26
				+22	.18
				1198	+72.38

★ A high-performance son of SAV Iron Mountain 8066 with impressive individual weaning and yearling ratios of 115 combined with individual IMF and ribeye ratios of 101 and 112, respectively, from a dam who records progeny weaning and yearling ratios of 109 and 110, respectively, coupled with a progeny ribeye ratio of 112 on four head.

★ A maternal sister has a progeny weaning ratio of 109 on two calves.

## 33 TANNER IRON MOUNTAIN 2161

Birth Date: 1-30-2012

Bull 17289485

Tattoo: 2161

SAV Iron Mountain 8066 [PDF] #TC Gridiron 258 [PDF] #+GAR Grid Maker [PDF] CWT  
16115617 SAV Madame Pride 3249 #TC Blackbird 7049 +29  
#SAV 8180 Traveler 004 [PDF] MARB  
SAV Madame Pride 8264 +.42

+Twin Valley Fix It 826 1080 #Schoenes Fix It 826 [PDF] BW REA  
Tanner Queen Mother 701 Woodhill Evergreen 58-1303 87 +.30  
15659034 Southern Belle Trend 300 GAR Precision 3514 205-Day FAT  
SBAF Rain Lady 149 568 +.015

BEPD	WEPD	YEPD	MILK	365-Day	\$B
+2.8	.36	+45	.27	+96	.27
				+20	.18
				1104	+68.83

★ A three-quarter brother to the previous bull by SAV Iron Mountain 8066.

★ This bull has an individual yearling ratio of 111, from a dam who records progeny weaning and yearling ratios of 102 and 104, respectively, combined with a progeny ribeye ratio of 104 on four calves.



Tanner Iron Mountain 2161 - Lot 33

# Tanner Angus Bulls



Tanner 004 Traveler 2122 - Lot 35



SAV Ruby 4207- The Pathfinder Dam of Lots 35, 36 and 37.

## 34 TANNER IRON MOUNTAIN 2208

Birth Date: 2-6-2012

Bull 17317549

Tattoo: 2208

#TC Gridiron 258 [PDF] #+GAR Grid Maker [PDF] **CWT**  
**SAV Iron Mountain 8066** [PDF] #TC Blackbird 7049 **+23**  
**16115617** SAV Madame Pride 3249 #SAV 8180 Traveler 004 [PDF+PDF] **MARB**  
 SAV Madame Pride 8264 **+72**

#B/R New Frontier 095 [PDF] #B/R New Design 036 [PDF] **BW**  
**Chokee Barbara 3049** White Fence Pride H1 **77** **REA**  
**+14670871** Ankony Barbara V355 #N Bar Emulation EXT [PDF] **205-Day** **FAT**  
 #Ankony Barbara T1045 **570** **+026**

in milroy/ barrel 4.10 to								365-Day	\$B
BEPD		WEPD		YEPD		MILK		365-Day	\$B
+2.2	.36	+46	.28	+77	.28	+15	.20	895	+69.16

★ A son of the popular Accelerated Genetics sire, SAV Iron Mountain 8066, with an individual IMF ratio of 115.

★ The dam of this bull has a progeny birth ratio of 95 combined with a progeny weaning ratio of 103 on five calves and a progeny IMF ratio of 105 on four head.

★ Recommended for heifers.



Tanner 004 Traveler 2148 - Lot 36

## 35 TANNER 004 TRAVELER 2122

Birth Date: 1-11-2012

Bull +17285148

Tattoo: 2122

#Sitz Traveler 8180 [PDF] #GDAR Traveler 71 [PDF] **CWT**  
**SAV 8180 Traveler 004** [PDF+PDF] Sitz Everelda Entense 1137 **+38**  
**#13512009** +Boyd Forever Lady 8003 #AAR New Trend **MARB**  
 SVF Forever Lady 57D **+36**

#BCC Bushwacker 41-93 [PDF] #Paramont Ambush 2172 [PDF] **BW**  
**SAV Ruby 4207** RC Anita T Bando 918903 **77** **REA**  
**#14739218** +SAV Ruby 2366 #+SAF 598 Bando 5175 [PDF] **205-Day** **FAT**  
 SAV Ruby 6031 **687** **+049**

BEPD								WEPD		YEPD		MILK		365-Day	\$B		
+3.0		.05		+53		.05		+92		.05		+25		.05		999	+66.24

★ The first of three powerful flush brothers backed by the time-tested Pathfinder Sires, SAV 8180 Traveler 004 and BCC Bushwacker 41-93, from a Pathfinder Dam who served as a donor at Schaff Angus Valley with a progeny weaning ratio of 107 on five natural calves and a progeny yearling ratio of 102 on four head combined with progeny IMF and ribeye ratios of 103 and 102, respectively, on eight head.

★ This bull is bred to transmit added performance, muscle and maternal strength.

## 36 TANNER 004 TRAVELER 2148

Birth Date: 1-20-2012

Bull +17285151

Tattoo: 2148

#Sitz Traveler 8180 [PDF] #GDAR Traveler 71 [PDF] **CWT**  
**SAV 8180 Traveler 004** [PDF+PDF] Sitz Everelda Entense 1137 **+40**  
**#13512009** +Boyd Forever Lady 8003 #AAR New Trend **MARB**  
 SVF Forever Lady 57D **+32**

#BCC Bushwacker 41-93 [PDF] #Paramont Ambush 2172 [PDF] **BW**  
**SAV Ruby 4207** RC Anita T Bando 918903 **77** **REA**  
**#14739218** +SAV Ruby 2366 #+SAF 598 Bando 5175 [PDF] **205-Day** **FAT**  
 SAV Ruby 6031 **738** **+046**

COWS/HEU								100	1167
BEPD		WEPD		YEPD		MILK		365-Day	\$B
1+3.0	.05	1+53	.05	1+92	.05	1+25	.05	1167	+66.23

★ An impressive individual backed by generations of proven genetics from the mating of the Pathfinder Sire SAV 8180 Traveler 004 with the Pathfinder Dam SAV Ruby 4207.

★ The dam of this bull has a progeny weaning ratio of 107 on five natural calves and a progeny yearling ratio of 102 on four head combined with progeny IMF and ribeye ratios of 103 and 102, respectively, on eight head.



# Tanner Angus Bulls



Tanner 004 Traveler 2147 - Lot 37

## 37 TANNER 004 TRAVELER 2147

Birth Date: 1-20-2012 Bull +17285150 Tattoo: 2147

#Sitz Traveler 8180 [PDF]	#GDAR Traveler 71 [PDF]	CWT
#13512009 +Boyd Forever Lady 8003	Sitz Everelda Entense 1137	+43
	#AAR New Trend	MARB
	SVF Forever Lady 57D	+36
		REA
#BCC Bushwacker 41-93 [PDF]	#Paramont Ambush 2172 [PDF]	BW
SAV Ruby 4207	RC Anita T Bando 918903	83
#14739218 +SAV Ruby 2366	#+SAF 598 Bando 5175 [PDF]	+14
	SAV Ruby 6031	205-Day
		FAT
		822
		+0.046
		\$B
		\$8
BEPD	WEPD	YEPD
I+3.0	.05	I+53
.05	I+92	.05
I+25	MILK	.05
1155	365-Day	\$B
		+67.70

- ★ This flush brother to Lots 35 and 36 has an individual IMF ratio of 110 and is backed by generations of proven Pathfinder Sires, from the mating of SAV 8180 Traveler 004 with the Pathfinder Dam SAV Ruby 4207.
- ★ The dam of this bull has a progeny weaning ratio of 107 on five natural calves and a progeny yearling ratio of 102 on four head along with progeny IMF and ribeye ratios of 103 and 102, respectively, on eight head.

## 38 TANNER FIRST CLASS 2340

Birth Date: 3-10-2012 Bull 17313010 Tattoo: 2340

#SAV Net Worth 4200 [PDF]	#SAV 8180 Traveler 004 [PDF-RDF]	CWT
SAV First Class 0207 [PDF]	+SAV May 2410	+30
16687685 #SAV Duke Girl 7348	#SAV Peacemaker 3179 [PDF]	MARB
	#AC Duke Girl 57	+18
		REA
#OCC Juneau 807 [PDF]	#+OCC Emblazon 854E [PDF]	BW
Robbins Miss Pride 8066	OCC Dixie Erica 903E	77
16832292 MAR Miss Pride 19 M171	Playman of Raw Hyde	+34
	MAR Miss Pride 86 M87	205-Day
		FAT
		599
		-.006
		\$B
		\$B
BEPD	WEPD	YEPD
+2.4	.36	+38
.27	+71	.26
+32	MILK	.13
1044	365-Day	\$B
		+61.93

- ★ A son of the Accelerated Genetics sire, SAV First Class 0207, the second top-selling bull of the 2011 SAV Sale.
- ★ The dam of this bull has a progeny birth ratio of 95 combined with a progeny weaning ratio of 103 on three calves and a progeny yearling ratio of 108 on two head.



Tanner First Class 2340 - Lot 38



Tanner Net Worth 2382 - Lot 39

## 39 TANNER NEW WORTH 2382

Birth Date: 3-29-2012 Bull 17313356 Tattoo: 2382

#SAV 8180 Traveler 004 [PDF-RDF]	#Sitz Traveler 8180 [PDF]	CWT
SAV Net Worth 4200 [PDF]	+Boyd Forever Lady 8003	+25
#14739204 +SAV May 2410	#+SAF 598 Bando 5175 [PDF]	MARB
	#SAV May 6269	+56
		REA
#SS Objective T510 OT26 [PDF]	#SS Traveler 6807 T510 [PDF]	BW
Whitestone Erica X242	SS Miss Rita R011 7R8	71
+16078474 +GAR Ext 4927	#N Bar Emulation EXT [PDF]	+52
	GAR Traveler 641	205-Day
		FAT
		635
		+0.027
		\$B
		\$8
BEPD	WEPD	YEPD
+2.0	.36	+52
.28	+89	.28
+29	MILK	.23
952	365-Day	\$B
		+70.88

- ★ This son of the Pathfinder Sire SAV Net Worth 4200 is from a dam who combines a progeny birth ratio of 97 with a progeny weaning ratio of 101 on three calves.
- ★ The dam of this bull is a maternal sister to GAR Retail Product.
- ★ Recommended for heifers.

## 40 TANNER ADVANCER 2310

Birth Date: 3-1-2012 Bull 17317572 Tattoo: 2310

#SAV Net Worth 4200 [PDF]	#SAV 8180 Traveler 004 [PDF-RDF]	CWT
SAV Advancer 7909	+SAV May 2410	+37
+16056393 #SAV Emblynette 7319	+SAV Ext Emulation 5040	MARB
	Sav Emblynette Diamond 5369	+39
		REA
#+Woodhill Foresight [PDF]	#Papa Forte 1921	BW
Whitestone Toni 7048	Bon View Gammer 85	82
15842494 B&B Toni 3031	Baldrige Leon L92	+17
	B&B Toni 8037	205-Day
		FAT
		608
		+0.032
		\$B
		\$B
BEPD	WEPD	YEPD
+1.7	.35	+44
.25	+78	.24
+21	MILK	.15
998	365-Day	\$B
		+68.30

- ★ A moderate birth weight herd sire prospect by SAV Advancer 7909, from a dam by Woodhill Foresight with a progeny IMF ratio of 114 on two head.



Tanner Advancer 2310 - Lot 40

**41 TANNER ADVANCER 2154**  
Birth Date: 1-24-2012 Bull: 17088250

Birth Date: 1-24-2012

Bull 17288350

*Tattoo: 2154*

CWT
+28
MARB
+21

<b>BW</b>	<b>REA</b>
<b>71</b>	<b>+.22</b>
<b>205-Day</b>	<b>FAT</b>
<b>541</b>	<b>+.014</b>

BEPD		WEPD		YEPD		MILK		365-Day	\$B
+2	.35	+42	.25	+68	.24	+23	.15	893	+57.75

- 

**TANNER ADVANCER 2139**  
Birth Date: 1-17-2012 Bull: 17000025

Birth Date: 1-17-2012

*Bull 17289025*

Tattoo: 2139

CWT
+19
MARB
+36

<b>BW</b>	<b>REA</b>
<b>89</b>	<b>+.19</b>
<b>205-Day</b>	<b>FAT</b>
<b>542</b>	<b>+.015</b>

REVENUE PER COW PER YEAR								365-Day	\$B
BEPD		WEPD		YEPD		MILK			
+2.6	.35	+40	.25	+73	.24	+20	.15	873	+54.92

- 4.2 TANNER ADVANCER 2283

Birth Date: 2-22-2012

Bull 17317561

*Tattoo: 2283*

**CWT**  
**I+35**  
**MARB**  
**I+28**

<b>BW</b>	<b>REA</b>
<b>77</b>	<b>I+.36</b>
<b>205-Day</b>	<b>FAT</b>
<b>638</b>	<b>I+.027</b>

Beerland-Kied 7/17/4								365-Day	\$B
BEPD		WEPD		YEPD		MILK		365-Day	\$B
+0	.35	+43	.25	+78	.24	+23	.15	1056	+66.28

- TANNER ADVANCER 2267

Birth Date: 2-20-2012

Bull 17317559

Tattoo: 2267

CWT	+26
MARB	+54

<b>BW</b>	<b>REA</b>
<b>77</b>	<b>+.44</b>
<b>205-Day</b>	<b>FAT</b>
<b>589</b>	<b>+.002</b>

2017-2018								365-Day	\$B
BEPD		WEPD		YEPD		MILK			
-.3	.33	+47	.24	+89	.23	+23	.14	1074	+73.28

- 

Tanner Farms



# Tanner Angus Bulls

45

## TANNER ADVANCER 2372

Birth Date: 3-26-2012

Bull 17317565

Tattoo: 2372

#SAV Net Worth 4200 [PDF]	#SAV 8180 Traveler 004 [PDF-RDF]	CWT
SAV Advancer 7909	+SAV May 2410	+39
+16056393 #SAV Emblynette 7319	+SAV Ext Emulation 5040	MARB
	Sav Emblynette Diamond 5369	+46
#B/R New Frontier 095 [PDF]	#B/R New Design 036 [DOC]	BW
Whitestone Beauty 504R	White Fence Pride H1	90
+14581578 +Whitestone Beauty K089	#Sitz Traveler 8180 [PDF]	205-Day
	+Finks Beauty 253 63 9J9	593
		FAT
		+011
		\$B
		365-Day
		\$B
		1049
		+77.35

- ★ This son of the Tanner featured sire, SAV Advancer 7909, is from a dam with progeny weaning and yearling ratios of 101 and 103, respectively, combined with progeny IMF and ribeye ratios of 101 and 104, respectively, on seven calves.
- ★ A maternal sister weaned her first calf with a ratio of 104.

46

## TANNER ADVANCER 2373

Birth Date: 3-26-2012

Bull 17317566

Tattoo: 2373

#SAV Net Worth 4200 [PDF]	#SAV 8180 Traveler 004 [PDF-RDF]	CWT
SAV Advancer 7909	+SAV May 2410	+29
+16056393 #SAV Emblynette 7319	+SAV Ext Emulation 5040	MARB
	Sav Emblynette Diamond 5369	+34
#DHD Traveler 6807	#QAS Traveler 23-4 [PDF]	BW
JLM Erica 0868	#Bemindful Maid DHD 0807	87
+16299786 Turnpike Erica 9127	#+SAF Neutron [PDF]	205-Day
	+Homestead Erica 642	604
		FAT
		+009
		\$B
		365-Day
		\$B
		999
		+65.46

- ★ This son of the proven sire, SAV Advancer 7909, has individual IMF and ribeye ratios of 106 and 103, respectively, from a dam by DHD Traveler 6807, with a progeny birth ratio of 99 combined with a progeny weaning ratio of 102 on seven calves.
- ★ Recommended for heifers.

47

## TANNER ADVANCER 2428

Birth Date: 4-25-2012

Bull 17317570

Tattoo: 2428

#SAV Net Worth 4200 [PDF]	#SAV 8180 Traveler 004 [PDF-RDF]	CWT
SAV Advancer 7909	+SAV May 2410	+34
+16056393 #SAV Emblynette 7319	+SAV Ext Emulation 5040	MARB
	Sav Emblynette Diamond 5369	+35
#+GAR Integrity [DOC]	#Bon View New Design 1407 [DOC]	BW
Tanner Blackcap X253	GAR Precision 1019	87
+16074762 #Tehama Blackcap E406	#Paramont Ambush 2172 [PDF]	205-Day
	Blackcap of Tehama C161	678
		FAT
		+018
		\$B
		365-Day
		\$B
		1115
		+69.10

- ★ A son of SAV Advancer 7909 with individual weaning and yearling ratios of 111 and 110, respectively, combined with an individual ribeye ratio of 110 as his dam's first calf in the AHIR program.
- ★ Recommended for heifers.



Tanner Advancer 2428 - Lot 47



Tanner Rito 2151 - Lot 48

48

## TANNER RITO 2151

Birth Date: 1-20-2012

Bull 17284034

Tattoo: 2151

+Rito 707 of Ideal 3407 7075	#RR Rito 707 [PDF]	CWT
SAV 707 Rito 9182	Ideal 3407 of 1418 076	+27
16396542 SAV Primrose 4281	#+Boyd New Day 8005 [PDF]	MARB
	#SAV Primrose Mistress 1170	+12
#SS Objective T510 OT26 [PDF]	#SS Traveler 6807 T510 [PDF]	BW
Tanner Blackcap 250Z	SS Miss Rita R011 7R8	59
16682515 Rita 3133 of 1336 Bushwaker	#BCC Bushwacker 41-93 [PDF]	205-Day
	+GAR 6807 Traveler 1336	660
		FAT
		-003
		\$B
		365-Day
		\$B
		1020
		+59.89

- ★ An exceptional herd sire prospect with impressive EPDs, sired by the Tanner featured sire, SAV 707 Rito 9182.
- ★ This bull was produced as the first calf from a dam backed by the Pathfinder Sires, SS Objective T510 OT26 and BCC Bushwacker 41-93.
- ★ Recommended for heifers.

49

## TANNER RITO A900

Birth Date: 12-15-2011

Bull 17284032

Tattoo: A900

+Rito 707 of Ideal 3407 7075	#RR Rito 707 [PDF]	CWT
SAV 707 Rito 9182	Ideal 3407 of 1418 076	+34
16396542 SAV Primrose 4281	#+Boyd New Day 8005 [PDF]	MARB
	#SAV Primrose Mistress 1170	+23
#+GAR Expectation 4915	#N Bar Emulation EXT [PDF]	BW
Tanner Queen Kimberly X287	GAR Traveler 2421	87
+16201114 Alberda Queen Kimberly 222	#VDAR New Trend 315 [PDF]	205-Day
	#Alberda Queen Kimberly 169	646
		FAT
		+002
		\$B
		365-Day
		\$B
		1088
		+66.75

- ★ A powerful son of the Tanner featured sire, SAV 707 Rito 9182.
- ★ This bull was produced as the first calf in the AHIR program from a dam who is a maternal sister to Alberda Traveler 416.



Tanner Rito A900 - Lot 49

# Tanner Angus Bulls



Tanner Rito 2246 - Lot 50

## 50 TANNER RITO 2246

Birth Date: 2-17-2012

Bull 17312993

Tattoo: 2246

SAV 707 Rito 9182 16396542	+Rito 707 of Ideal 3407 7075 SAV Primrose 4281	#RR Rito 707 [PDF] Ideal 3407 of 1418 076 #Boyd New Day 8005 [PDF] #SAV Primrose Mistress 1170	CWT							
			+41							
			MARB +20							
Tanner Blackcap 626Y 16623367	+BC Lookout 7024 [PDF] +Tanner Blackcap 2114 W744	OCC Legend 616L [PDF] Gibbet Hill Mignonne E37 #SAV 8180 Traveler 004 [PDF+PDF] +GAR Ext 2114	BW	REA						
			72	+60						
			205-Day FAT	FAT						
			649	+.016						
			365-Day	\$B						
BEPD		WEPD	YEPD	MILK						
+3.5		.33	+63	.23	+110	.22	+25	.11	1156	+72.05

- ★ An outstanding son of the Tanner featured sire, SAV 707 Rito 9182, with individual weaning and yearling ratios of 109 and 110, respectively, combined with an individual ribeye ratio of 110 as the first calf from a dam by BC Lookout 7024.

## 51 TANNER RITO 2319

Birth Date: 3-3-2012

Bull 17313006

Tattoo: 2319

SAV 707 Rito 9182 16396542	+Rito 707 of Ideal 3407 7075 SAV Primrose 4281	#RR Rito 707 [PDF] Ideal 3407 of 1418 076 #+Boyd New Day 8005 [PDF] #SAV Primrose Mistress 1170	CWT	
			+39	
			MARB	
			+24	
Tanner Pride 129Z 16678356	+BC Lookout 7024 [PDF] Tanner Pride X828	OCC Legend 616L [PDF] Gibbet Hill Mignonne E37 #Morgans Direction 111 9901 [PDF+PDF] Tanner Pride T606	BW	REA
			77	+72
			205-Day	FAT
			671	-.012
			365-Day	\$B
			1113	+77.28
BEPD		WEPD	YEPD	MILK
+4.2	.33	+58	.23	+109 .22 +27 .11

- ★ This three-quarter brother to the previous bull is sired by SAV 707 Rito 9182, from a dam by BC Lookout 7024.
- ★ This bull records individual weaning and yearling ratios of 113 and 115, respectively, along with an individual ribeye ratio of 105 as his dam's first calf.



Tanner Rito 2319 - Lot 51



Tanner Timeless 1262 - Lot 52

## 52 TANNER TIMELESS 1262

Birth Date: 12-12-2011

Bull 17269691

Tattoo: 1262

WMR Timeless 458 [pdf] 16226527	+Leachman Right Time 338-5605 WMR Blackcap 521	#Hyline Right Time 338 [pdf] +Leachman Erica 1201 WMR Dateline 210 WMR Blackcap 043	CWT	
			I-46	
			MARB	
			I-.51	
Bricton Lady 2P61 X814 +15998559	#SS Objective T510 0T26 [pdf] +Sinclair lady 2P61 4465	#SS Traveler 6807 T510 [pdf] SS Miss Rita R011 7R8 #N Bar Prime Time D806 [pdf] +Ideal 4465 of 6807 4286	BW	REA
			70	I+.59
			205-Day	FAT
			727	I+.034
				\$B
			365-Day	
			961	+84.10

- ★ A high-performing son of the Accelerated Genetics sire, WMR Timeless 458, with an individual birth ratio of 89 combined with an individual weaning ratio of 123.
- ★ The dam of this bull is a full sister to the ABS Global sire, Whitestone Advocate, and she has a progeny birth ratio of 90 combined with a progeny weaning ratio of 113 on two calves.
- ★ Recommended for heifers.

## 53 TANNER TIMELESS 2342

Birth Date: 3-12-2012

Bull 17319316

Tattoo: 2342

WMR Timeless 458 [pdf] 16226527	+Leachman Right Time 338-5605 WMR Blackcap 521	#Hyline Right Time 338 [pdf] +Leachman Erica 1201 WMR Dateline 210 WMR Blackcap 043	CWT	+40
			MARB	+59
Tanner Everelda X219 +16074729	#+GAR Integrity [pdf] +Everelda P073 of Whitestone	#Bon View New Design 1407 [pdf] GAR Precision 1019 #B/R New Design 323 +Shady Brook Everelda 216G	BW	71
			205-Day	FAT
			597	+.019
			365-Day	\$B

- ★ A moderate birth weight herd sire prospect sired by WMR Timeless 458, backed by the herd sire producing Everelda Entense family.
- ★ Recommended for heifers.



Tanner Timeless 2342 - Lot 53



# Tanner Upward Bulls



Tanner Upward A904 - Lot 54



SAV Pride 3135 - The dam of Lots 54 through 57.

## 54 TANNER UPWARD A904

Birth Date: 12-18-2011

Bull +17285254

Tattoo: A904

#Sitz Upward 307R [PDF] #14963730	#Connealy Onward [PDF] Sitz Henrietta Pride 81M	#Connealy Lead On [PDF] Altune of Conanga 6104 #Sitz Value 7097 [PDF] Sitz Henrietta Pride 1370	CWT	
			+58	
SAV Pride 3135 14455329	#Bon View New Design 878 [PDF] #SAV Pride 8169	#B/R New Design 036 [DOC] Bon View Gammer 85 #RR Scotchcap 9440 +SAV Emulation Pride 5015	MARB	
			+32	
			BW	REA
			87	+21
			205-Day	FAT
			707	+016
			365-Day	\$B
			1048	+77.21

- ★ The first of four flush brothers produced in the embryo program by the popular Genex/CRI Pathfinder Sire, Sitz Upward 307R, from the Tanner foundation donor who was selected as a feature of a past SAV sale and has been represented as the Angus breed's pictured cow in ABS Global advertising.
- ★ The dam of this bull has a progeny weaning ratio of 110 on four natural calves and a progeny yearling ratio of 115 on one head.

## 55 TANNER UPWARD A908

Birth Date: 12-19-2011

Bull +17285257

Tattoo: A908

#Sitz Upward 307R [PDF] #14963730	#Connealy Onward [PDF] Sitz Henrietta Pride 81M	#Connealy Lead On [PDF] Altune of Conanga 6104 #Sitz Value 7097 [PDF] Sitz Henrietta Pride 1370	CWT	
			+58	
SAV Pride 3135 14455329	#Bon View New Design 878 [PDF] #SAV Pride 8169	#B/R New Design 036 [DOC] Bon View Gammer 85 #RR Scotchcap 9440 +SAV Emulation Pride 5015	MARB	
			+38	
			BW	REA
			83	+23
			205-Day	FAT
			730	+020
			365-Day	\$B
			1053	+79.30

- ★ A product of the embryo program with a unique pedigree, by the Pathfinder Sire Sitz Upward 307R.
- ★ This bull is from an impressive donor dam who records a progeny weaning ratio of 110 on four natural calves and a progeny yearling ratio of 115 on one head and she is the pictured cow of the breed in ABS Global advertising.

## 56 TANNER UPWARD A922

Birth Date: 12-22-2011

Bull +17285260

Tattoo: A922

#Sitz Upward 307R [PDF] #14963730	#Connealy Onward [PDF] Sitz Henrietta Pride 81M	#Connealy Lead On [PDF] Altune of Conanga 6104 #Sitz Value 7097 [PDF] Sitz Henrietta Pride 1370	CWT	
			+62	
SAV Pride 3135 14455329	#Bon View New Design 878 [PDF] #SAV Pride 8169	#B/R New Design 036 [DOC] Bon View Gammer 85 #RR Scotchcap 9440 +SAV Emulation Pride 5015	MARB	
			+33	
			BW	REA
			83	+32
			205-Day	FAT
			738	+028
			365-Day	\$B
			1127	+78.47

- ★ This high-indexing member of the successful embryo flush has individual weaning and yearling ratios of 108 and 110, respectively, from a famous donor dam with a progeny weaning ratio of 110 on four natural calves and a progeny yearling ratio of 115 on one head.
- ★ The dam was selected as a featured donor in the 2009 SAV Sale and her progeny include the fourth top 205-day weight bull of the 2007 SAV calf crop.
- ★ The Pathfinder grandam produced the one-time record-performing bull in SAV history.

## 57 TANNER UPWARD A943

Birth Date: 12-28-2011

Bull +17285262

Tattoo: A943

#Sitz Upward 307R [PDF] #14963730	#Connealy Onward [PDF] Sitz Henrietta Pride 81M	#Connealy Lead On [PDF] Altune of Conanga 6104 #Sitz Value 7097 [PDF] Sitz Henrietta Pride 1370	CWT	
			+61	
SAV Pride 3135 14455329	#Bon View New Design 878 [PDF] #SAV Pride 8169	#B/R New Design 036 [DOC] Bon View Gammer 85 #RR Scotchcap 9440 +SAV Emulation Pride 5015	MARB	
			+34	
			BW	REA
			90	+27
			205-Day	FAT
			709	+018
			365-Day	\$B
			1141	+79.67

- ★ This flush brother to Lots 54, 55 and 56 is by the Genex/CRI Pathfinder Sire, Sitz Upward 307R, from the famous Tanner foundation donor, SAV Pride 3135, who records a progeny weaning ratio of 110 on four natural calves and a progeny yearling ratio of 115 on one head.
- ★ The dam of this bull is the pictured cow of the breed in ABS Global advertising.

# Tanner Upward Bulls



Tanner Upward A941 - Lot 58

## 58 TANNER UPWARD A941

Birth Date: 12-28-2011

Bull 17283904

Tattoo: A941

#Connealy Onward [DOF]	#Connealy Lead On [DOF]	CWT
Sitz Upward 307R [DOF]	Altune of Conanga 6104	+59
#14963730 Sitz Henrietta Pride 81M	#Sitz Value 7097 [DOF]	MARB
	Sitz Henrietta Pride 1370	+46
#SAV Net Worth 4200 [DOF]	#SAV 8180 Traveler 004 [DOF]	BW
Tanner Gammer 957Y	+SAV May 2410	59
16692760 Whitestone Gammer 6059	+Koupals B&B Bando 3014	205-Day
	B&B Gammer 4057	FAT
		713
		+027
		\$B
BEPD	WEPD	YEPD
+8	.37	+61
.28	+105	.28
+35	.21	979
+86.42		

- ★ A blending of the popular and proven Pathfinder Sires, Sitz Upward 307R and SAV Net Worth 4200.
- ★ This bull has an individual birth ratio of 90 combined with an individual weaning ratio of 108 as his dam's first calf.
- ★ Recommended for heifers.

## 59 TANNER UPWARD A958

Birth Date: 12-31-2011

Bull 17288907

Tattoo: A958

#Connealy Onward [DOF]	#Connealy Lead On [DOF]	CWT
Sitz Upward 307R [DOF]	Altune of Conanga 6104	+62
#14963730 Sitz Henrietta Pride 81M	#Sitz Value 7097 [DOF]	MARB
	Sitz Henrietta Pride 1370	+37
#SAV 8180 Traveler 004 [DOF]	#Sitz Traveler 8180 [DOF]	BW
Whitestone Blackbird X109	+Boyd Forever Lady 8003	77
#16078431 Whitestone Blkdb Progress	+BCC New Design 036 2156-149	205-Day
	+B&B Blkdb Progress 2092	FAT
		658
		+032
		\$B
BEPD	WEPD	YEPD
+2.0	.37	+59
.28	+108	.28
+36	.22	1068
+83.96		

- ★ A favorite by the Pathfinder Sire Sitz Upward 307R with an individual birth ratio of 98 combined with individual weaning and yearling ratios of 112 and 108, respectively.
- ★ The Pathfinder Dam of this bull has a progeny birth ratio of 99 combined with a progeny weaning ratio of 110 on three calves and a progeny yearling ratio of 105 on two head.
- ★ Recommended for heifers.



Tanner Upward A958 - Lot 59



Tanner Upward 2153 - Lot 60

## 60 TANNER UPWARD 2153

Birth Date: 1-23-2012

Bull 17288349

Tattoo: 2153

#Connealy Onward [DOF]	#Connealy Lead On [DOF]	CWT
Sitz Upward 307R [DOF]	Altune of Conanga 6104	+58
#14963730 Sitz Henrietta Pride 81M	#Sitz Value 7097 [DOF]	MARB
	Sitz Henrietta Pride 1370	+41
#SAV 8180 Traveler 004 [DOF]	#Sitz Traveler 8180 [DOF]	BW
Whitestone Eblinette X035	+Boyd Forever Lady 8003	90
16078402 Whitestone Eblinette 726	TPF Traveler T510 P152	205-Day
	JWK Eblinette 6012	FAT
		666
		+043
		\$B
BEPD	WEPD	YEPD
+4.5	.37	+62
.28	+112	.28
+34	.21	1074
+78.99		

- ★ A top-indexing bull backed by the Pathfinder Sires, Sitz Upward 307R and SAV 8180 Traveler 004, recording individual weaning and yearling ratios of 113 and 109, respectively.
- ★ The dam of this bull has progeny weaning and yearling ratios of 109 and 105, respectively, combined with a progeny IMF ratio of 115 on two head.

## 61 TANNER UPWARD 2131

Birth Date: 1-15-2012

Bull 17283907

Tattoo: 2131

#Connealy Onward [DOF]	#Connealy Lead On [DOF]	CWT
Sitz Upward 307R [DOF]	Altune of Conanga 6104	+58
#14963730 Sitz Henrietta Pride 81M	#Sitz Value 7097 [DOF]	MARB
	Sitz Henrietta Pride 1370	+36
#SAV 8180 Traveler 004 [DOF]	#Sitz Traveler 8180 [DOF]	BW
Tanner Rita 944Y	+Boyd Forever Lady 8003	87
+16679031 EXG Limestone PrimeTime M097	#Bon View New Design 878 [DOF]	205-Day
	+GAR Prime Time H79	FAT
		592
		+037
		\$B
BEPD	WEPD	YEPD
+5.5	.36	+53
.27	+103	.28
+30	.21	958
+77.99		

- ★ A three-quarter brother to Lots 59 and 60, backed by the Pathfinder Sires, Sitz Upward 307R and SAV 8180 Traveler 004.
- ★ The grandam was a donor dam.



Tanner Upward 2131 - Lot 61



# Tanner Upward Bulls

## 62 TANNER UPWARD 2256

Birth Date: 2-18-2012

Bull 17320490

Tattoo: 2256

#Connely Onward [PDF]	#Connely Lead On [PDF]	CWT
Sitz Upward 307R [PDF]	Altune of Conanga 6104	+55
#14963730 Sitz Henrietta Pride 81M	#Sitz Value 7097 [PDF]	MARB
	Sitz Henrietta Pride 1370	+55
#SAV Final Answer 0035 [PDF]	#Sitz Traveler 8180 [PDF]	BW
Tanner Skymere Y441	SAV Emulous 8145	89
16322121 Tanner Skymere 776	#B/R New Frontier 095 [PDF]	REA
	Skymere P042 of Whitestone	+57
		205-Day
		FAT
		723
		+028
		\$B
		365-Day
		\$B
		1163
		+89.61

- \* A blending of the Genex/CRI Pathfinder Sires, Sitz Upward 307R and SAV Final Answer 0035, recording individual weaning and yearling ratios of 111 and 109, respectively, from a dam with a progeny weaning ratio of 102 on two calves.

## 63 TANNER UPWARD 2258

Birth Date: 2-19-2012

Bull 17320485

Tattoo: 2258

#Connely Onward [PDF]	#Connely Lead On [PDF]	CWT
Sitz Upward 307R [PDF]	Altune of Conanga 6104	+58
#14963730 Sitz Henrietta Pride 81M	#Sitz Value 7097 [PDF]	MARB
	Sitz Henrietta Pride 1370	+43
HARB Pendleton 765 JH [PDF]	#SAV Final Answer 0035 [PDF]	BW
Tanner Ruth 9025	#HARB Black Lady 375 JH	65
16456001 B&B Ruth 4035	#+GAR Grid Maker [PDF]	REA
	#B&B Ruth 706	+37
		205-Day
		FAT
		705
		+028
		\$B
		365-Day
		\$B
		1126
		+83.15

- \* This low-birth, high-growth son of Sitz Upward 307R, combines an individual birth ratio of 85 with individual weaning and yearling ratios of 109 and 106, respectively.
- \* The dam has a progeny birth ratio of 90 combined with progeny weaning and yearling ratios of 106 and 103, respectively, on two calves.
- \* Recommended for heifers.

## 64 TANNER UPWARD 2303

Birth Date: 3-1-2012

Bull 17320526

Tattoo: 2303

#Connely Onward [PDF]	#Connely Lead On [PDF]	CWT
Sitz Upward 307R [PDF]	Altune of Conanga 6104	+66
#14963730 Sitz Henrietta Pride 81M	#Sitz Value 7097 [PDF]	MARB
	Sitz Henrietta Pride 1370	+45
#B/R New Frontier 095 [PDF]	#B/R New Design 036 [PDF]	BW
Tanner Evergreen 787	White Fence Pride H1	83
15660284 #Evergreen P016 of Whitestone	#+Leachman Right Time	REA
	+Whitstone Evergreen 468M	+59
		205-Day
		FAT
		681
		-008
		\$B
		365-Day
		\$B
		1171
		+92.76

- \* This bull has individual weaning and yearling ratios of 105 and 110, respectively, along with an individual ribeye ratio of 110, backed by the Pathfinder Sires, Sitz Upward 307R, B/R New Frontier 095 and Leachman Right Time.
- \* The dam has a progeny birth ratio of 99 combined with progeny weaning and yearling ratios of 103 and 106, respectively, and a progeny ribeye ratio of 105 on four head.
- \* A maternal sister has a progeny weaning ratio of 109 on two calves.

## 65 TANNER UPWARD 2356

Birth Date: 3-17-2012

Bull 17313447

Tattoo: 2356

#Connely Onward [PDF]	#Connely Lead On [PDF]	CWT
Sitz Upward 307R [PDF]	Altune of Conanga 6104	+62
#14963730 Sitz Henrietta Pride 81M	#Sitz Value 7097 [PDF]	MARB
	Sitz Henrietta Pride 1370	+46
#B/R New Frontier 095 [PDF]	#B/R New Design 036 [PDF]	BW
Tanner Erica W796	White Fence Pride H1	89
16047759 Tanner Erica 513	+TPF Kincaid E11	REA
	TPF Erica 491	+23
		205-Day
		FAT
		764
		-004
		\$B
		365-Day
		\$B
		1258
		+87.18

- \* A high-performance son of Sitz Upward 307R with impressive individual weaning and yearling ratios of 117, from a dam with progeny weaning and yearling ratios of 110 and 108, respectively, on three calves.



Tanner Upward A906 - Lot 66

## 66 TANNER UPWARD A906

Birth Date: 12-18-2011

Bull +17285264

Tattoo: A906

#Connely Onward [PDF]	#Connely Lead On [PDF]	CWT
Sitz Upward 307R [PDF]	Altune of Conanga 6104	+48
#14963730 Sitz Henrietta Pride 81M	#Sitz Value 7097 [PDF]	MARB
	Sitz Henrietta Pride 1370	+30
#N Bar Emulation EXT [PDF]	#Emulation N Bar 5522	BW
Wulffs Erica Dianna 6410	N Bar Primrose 2424	73
+13087609 Wulffs Erica Dianna C116	#Tehama Bando 155 [PDF]	REA
	Wulffs Erica Dianna A308	+34
		205-Day
		FAT
		694
		-013
		\$B
		365-Day
		\$B
		1025
		+79.08

- \* A son of Sitz Upward 307R produced in the embryo program with an individual birth ratio of 96 combined with individual weaning and yearling ratios of 102 and 101, respectively, from a donor dam who balances a progeny birth ratio of 94 with a progeny weaning ratio of 100 on eight natural calves and a progeny yearling ratio of 103 on five head along with progeny IMF and ribeye ratios of 101 on 48 head.
- \* Recommended for heifers.

## 67 TANNER UPWARD A953

Birth Date: 12-30-2011

Bull 17288360

Tattoo: A953

#Connely Onward [PDF]	#Connely Lead On [PDF]	CWT
Sitz Upward 307R [PDF]	Altune of Conanga 6104	+49
#14963730 Sitz Henrietta Pride 81M	#Sitz Value 7097 [PDF]	MARB
	Sitz Henrietta Pride 1370	+48
#SS Objective T510 OT26 [PDF]	#SS Traveler 6807 T510 [PDF]	BW
Whitstone Pride X009	SS Miss Rita R011 7R8	87
16078389 Whitestone Pride V021	#SAV 8180 Traveler 004 [PDF]	REA
	Whitstone Pride T028	+47
		205-Day
		FAT
		576
		+005
		\$B
		365-Day
		\$B
		1034
		+87.52

- \* A blending of the extreme EPD sires, Sitz Upward 307R and SS Objective T510 OT26.
- \* This bull has elite EPD rankings for Weaning, Yearling and Milk.



Tanner Upward 2356 - Lot 65

# Tanner Upward Bulls



Tanner Upward 2263 - Lot 70

## 68 TANNER UPWARD 2330

Birth Date: 3-7-2012

Bull 17320527

Tattoo: 2330

#Connealy Onward [PDF]	#Connealy Lead On [PDF]	CWT
Sitz Upward 307R [PDF]	Altune of Conanga 6104	+57
#14963730 Sitz Henrietta Pride 81M	#Sitz Value 7097 [PDF]	MARB
	Sitz Henrietta Pride 1370	+68
Koupals B&B Traveler 4062	#SAV 8180 Traveler 004 [PDF]	BW
Whitstone Miss Liz V226	Koupal Voltage 5016	78
15612137 Whitstone Elizabeth T111	#B/R New Frontier 095 [PDF]	205-Day
	Miss Liz 1166 of Whitstone	675
		+0.022
BEPD	WEPD	YEPD
+1.8	.37	+58
	.28	+106
	.28	+33
	.21	1101
		+93.22

- ★ A three-quarter brother to Whitestone Black Arrow Z101 by the Pathfinder Sire Sitz Upward 307R, from a dam by Koupals B&B Traveler 4062.
- ★ This bull has individual IMF and ribeye ratios of 117 and 108, respectively, and balances an individual birth ratio of 98 with individual weaning and yearling ratios of 104 and 103, respectively, from a dam with a progeny weaning ratio of 107 on five calves and a progeny yearling ratio of 106 combined with progeny IMF and ribeye ratios of 115 and 103, respectively, on four head.

## 69 TANNER UPWARD 2242

Birth Date: 2-16-2012

Bull 17317558

Tattoo: 2242

#Connealy Onward [PDF]	#Connealy Lead On [PDF]	CWT
Sitz Upward 307R [PDF]	Altune of Conanga 6104	+54
#14963730 Sitz Henrietta Pride 81M	#Sitz Value 7097 [PDF]	MARB
	Sitz Henrietta Pride 1370	+26
#Rally New Frontier 5233	#B/R New Frontier 095 [PDF]	BW
Evenson Mary 5197	Rally Tibbie 5380	90
15153462 Evenson Mary 3278	Evenson Direct Deposit 926	205-Day
	Evenson Mary 207	595
		+0.017
BEPD	WEPD	YEPD
+3.1	.37	+56
	.28	+108
	.28	+28
	.22	1073
		+74.54

- ★ A blending of the high-performance Pathfinder Sires, Sitz Upward 307R and Rally New Frontier 5233.
- ★ The dam is backed by generations of breeding in the Evenson Angus herd.



Tanner Upward 2242 - Lot 69

## 70 TANNER UPWARD 2263

Birth Date: 2-20-2012

Bull 17322764

Tattoo: 2263

#Connealy Onward [PDF]	#Connealy Lead On [PDF]	CWT
Sitz Upward 307R [PDF]	Altune of Conanga 6104	+56
#14963730 Sitz Henrietta Pride 81M	#Sitz Value 7097 [PDF]	MARB
	Sitz Henrietta Pride 1370	+54
#GAR Precision 1680	#Tehama Bando 155 [PDF]	BW
Whitstone Blackcap U235	9J9 GAR 856	63
+15029227 +GAR Ext 2114	#N Bar Emulation EXT [PDF]	205-Day
	#GAR Scotch Cap 867	609
		+0.014
BEPD	WEPD	YEPD
+0	.37	+51
	.29	+103
	.29	+30
	.24	1175
		+91.89

- ★ A massive low-birth bull backed by the popular and proven Pathfinder Sire Sitz Upward 307R.
- ★ The dam records a progeny birth ratio of 95 combined with a progeny weaning ratio of 101 on five calves and a progeny yearling ratio of 105 on four head along with progeny IMF and ribeye ratios of 115 and 105, respectively, on eight head, stemming from a famous grandam.
- ★ Recommended for heifers.

## 71 TANNER UPWARD 2350

Birth Date: 3-14-2012

Bull 17313450

Tattoo: 2350

#Connealy Onward [PDF]	#Connealy Lead On [PDF]	CWT
Sitz Upward 307R [PDF]	Altune of Conanga 6104	+59
#14963730 Sitz Henrietta Pride 81M	#Sitz Value 7097 [PDF]	MARB
	Sitz Henrietta Pride 1370	+25
#+Whitstone Xception	#GAR Precision 1680	BW
Whitstone Kimberly W142	+Toebben Forever Lady 150H	81
15723934 #+Whitstone Kimberly 641T	#JLB Exacto 416 [PDF]	205-Day
	Alberda Queen Kimberly 222	665
		+0.023
BEPD	WEPD	YEPD
+2.7	.35	+54
	.27	+101
	.27	+37
	.21	1127
		+79.00

- ★ This son of Sitz Upward 307R has individual weaning and yearling ratios of 102 and 105, respectively, and an individual ribeye ratio of 106.
- ★ The dam of this bull has progeny weaning and yearling ratios of 113 and 102, respectively, combined with progeny IMF and ribeye ratios of 101 and 115, respectively, on two calves and the grandam is a Pathfinder Dam.

## 72 TANNER UPWARD 2355

Birth Date: 3-16-2012

Bull 17429813

Tattoo: 2355

#Connealy Onward [PDF]	#Connealy Lead On [PDF]	CWT
Sitz Upward 307R [PDF]	Altune of Conanga 6104	+53
#14963730 Sitz Henrietta Pride 81M	#Sitz Value 7097 [PDF]	MARB
	Sitz Henrietta Pride 1370	+38
#+OCC Emblazon 854E [PDF]	#DHD Traveler 6807	BW
Murcielago Empress T086	Dixie Erica of CH 1019	65
+16252223 B/R Blackcap Empress 558	#Bon View Bando 598 [PDF]	205-Day
	B/R Blackcap Empress 76	646
		+0.006
BEPD	WEPD	YEPD
+6	.36	+59
	.29	+109
	.29	+27
	.23	1081
		+87.49

- ★ A blending of the Pathfinder Sires, Sitz Upward 307R and OCC Emblazon 854E, with the herd sire producing Blackcap Empress family.
- ★ This bull has an individual ribeye ratio of 110 and his dam has a progeny birth ratio of 93 combined with progeny weaning and yearling ratios of 103 and 104, respectively, on three calves.
- ★ Recommended for heifers.

## 73 TANNER UPWARD 2103 [CAC]

Birth Date: 1-3-2012

Bull Reg.No.Pdg.

Tattoo: 2103

#Connealy Onward [PDF]	#Connealy Lead On [PDF]	CWT	CWT
Sitz Upward 307R [PDF]	Altune of Conanga 6104	+84	+23
#14963730 Sitz Henrietta Pride 81M	#Sitz Value 7097 [PDF]	MARB	MARB
	Sitz Henrietta Pride 1370	+42	+35
+SAV 5175 Bando 4597 [PDF]	#+SAF 598 Bando 5175 [PDF]	BW	REA
Whitstone Blackcap 6097	+Champion Hill Blossom 1611	71	+68
15460753 B&B Blackcap 2044	Koupals B&B Focus 0030	205-Day	FAT
	#B&B Blackcap 0034	667	+0.012
		365-Day	FAT
		1137	+88.81
			+63.32

BEPD	WEPD	YEPD	MILK
+2.5	.98	+70	.97
+1.1	.41	+44	.31
		+83	.29
			+36
			.28

- ★ CAC Carrier - Sells without papers.
- ★ Recommended for heifers.



# Tanner Black Arrow Bulls

## 74 TANNER BLACK ARROW 2217

Birth Date: 2-9-2012

Bull 17322969

Tattoo: 2217

#Sitz Upward 307R [PDF] #Connealy Onward [PDF] **CWT**  
**Whitestone Black Arrow Z101** [PDF] Sitz Henrietta Pride 81M **+41**  
 16649387 Whitestone Evergreen W243 Koupals B&B Traveler 4062 **MARB**  
 Whitestone Evergreen U170 **+84**

#GAR Predestined [PDF] #B/R New Design 036 [PDF] **BW** **REA**  
**Mtn Meadow Rita R6084** #+GAR Ext 4206 **83** **+43**  
 +15244992 +GAR Precision G242 #GAR Precision 1680 **205-Day** **FAT**  
 +GAR EXT 2537 **728** **+033**

BEPD	WEPD	YEPD	MILK	365-Day	\$B
+2.9	.35	+56	.26	+98	.24
					+32
					.13
					1301
					+88.43

★ The first of three three-quarter brothers from the first calf crop by the Tanner Genex/CRI sire, Whitestone Black Arrow Z101, the all-time record-selling Whitestone bull.

★ This bull has individual weaning and yearling ratios of 113 and 109, respectively, combined with individual IMF and ribeye ratios of 122 and 108, respectively, from a dam who records a progeny weaning ratio of 104 on five calves and a progeny yearling ratio of 102 on four head along with a progeny IMF ratio of 113 on seven head.

★ Two maternal sisters post a collective progeny weaning ratio of 112 on their first calves.

## 75 TANNER BLACK ARROW 2277

Birth Date: 2-21-2012

Bull 17320278

Tattoo: 2277

#Sitz Upward 307R [PDF] #Connealy Onward [PDF] **CWT**  
**Whitestone Black Arrow Z101** [PDF] Sitz Henrietta Pride 81M **+37**  
 16649387 Whitestone Evergreen W243 Koupals B&B Traveler 4062 **MARB**  
 Whitestone Evergreen U170 **+58**

#GAR Predestined [PDF] #B/R New Design 036 [PDF] **BW** **REA**  
**Tanner Zara X379** #+GAR Ext 4206 **81** **+12**  
 16320602 B&B Zara 5087 +Koupals B&B Stinger 301 **205-Day** **FAT**  
 B&B Zara 1011 **583** **+020**

BEPD	WEPD	YEPD	MILK	365-Day	\$B
+2.8	.36	+46	.27	+94	.26
					+27
					.12
					1145
					+76.21

★ A blending of Whitestone Black Arrow Z101 and GAR Predestined to record an individual IMF ratio of 108.

## 76 TANNER BLACK ARROW 2247

Birth Date: 2-17-2012

Bull 17320272

Tattoo: 2247

#Sitz Upward 307R [PDF] #Connealy Onward [PDF] **CWT**  
**Whitestone Black Arrow Z101** [PDF] Sitz Henrietta Pride 81M **+34**  
 16649387 Whitestone Evergreen W243 Koupals B&B Traveler 4062 **MARB**  
 Whitestone Evergreen U170 **+65**

#GAR Predestined [PDF] #B/R New Design 036 [PDF] **BW** **REA**  
**Tanner Blacklass X372** #+GAR Ext 4206 **89** **+43**  
 +16378903 +Whitestone Blacklass U300 #+Wulffs Ext 6106 **205-Day** **FAT**  
 +GAR Precision 303 **613** **+013**

BEPD	WEPD	YEPD	MILK	365-Day	\$B
+4.5	.36	+44	.27	+81	.26
					+32
					.12
					1043
					+81.18

★ A three-quarter brother to Lots 74 and 75, sired by the record-selling bull in Whitestone history.

★ The dam of this bull has a progeny weaning ratio of 108 and a progeny yearling ratio of 100 combined with progeny IMF and ribeye ratios of 122 and 101, respectively, on two calves.



Tanner Black Arrow 2247 - Lot 76



Tanner Black Arrow 2217 - Lot 74

## 77 TANNER BLACK ARROW 2273

Birth Date: 2-20-2012

Bull +17308134

Tattoo: 2273

#Sitz Upward 307R [PDF] #Connealy Onward [PDF] **CWT**  
**Whitestone Black Arrow Z101** [PDF] Sitz Henrietta Pride 81M **+28**  
 16649387 Whitestone Evergreen W243 Koupals B&B Traveler 4062 **MARB**  
 Whitestone Evergreen U170 **+42**

Koupals B&B Discovery 503 #Baldridge Navigator N5 [PDF] **BW** **REA**  
**Whitestone Progress 7032** +North Fork Lucy 8120 **71** **+35**  
 15835733 +B&B Blkbd Progress 5025 #Whitestone Precision H141 [PDF] **205-Day** **FAT**  
 #Koupal Blkbd Progress 5015 **620** **+002**

BEPD	WEPD	YEPD	MILK	365-Day	\$B
+6	.35	+42	.27	+73	.26
					+25
					.12
					950
					+69.63

★ A product of the embryo program from the first calf crop by the Tanner Genex/CRI sire, Whitestone Black Arrow Z101.

★ This bull has an individual IMF ratio of 114.

★ Recommended for heifers.

## 78 TANNER BLACK ARROW 2272

Birth Date: 2-20-2012

Bull +17308132

Tattoo: 2272

#Sitz Upward 307R [PDF] #Connealy Onward [PDF] **CWT**  
**Whitestone Black Arrow Z101** [PDF] Sitz Henrietta Pride 81M **+34**  
 16649387 Whitestone Evergreen W243 Koupals B&B Traveler 4062 **MARB**  
 Whitestone Evergreen U170 **+35**

Koupals B&B Discovery 503 #Baldridge Navigator N5 [PDF] **BW** **REA**  
**Whitestone Progress 7032** +North Fork Lucy 8120 **83** **+49**  
 15835733 +B&B Blkbd Progress 5025 #Whitestone Precision H141 [PDF] **205-Day** **FAT**  
 #Koupal Blkbd Progress 5015 **821** **+008**

BEPD	WEPD	YEPD	MILK	365-Day	\$B
+1.6	.35	+54	.27	+83	.26
					+25
					.12
					1088
					+72.76

★ A flush brother to the previous bull with individual weaning and yearling ratios of 114 and 102, respectively, sired by Whitestone Black Arrow Z101.

★ Recommended for heifers.



Tanner Black Arrow 2272 - Lot 78

# Tanner Angus Bulls



Tanner Consensus 2132 - Lot 82

## 79 TANNER BLACK ARROW 2328

Birth Date: 3-7-2012 Bull 17313007 Tattoo: 2328

#Sitz Upward 307R [PDF]	#Connealy Onward [PDF]	CWT
Whitestone Black Arrow Z101 [PDF]	Sitz Henrietta Pride 81M	+30
16649387	Whitestone Evergreen W243	MARB
	Koupals B&B Traveler 4062	+49
	Whitestone Evergreen U170	REA
		+40
#BR Midland [PDF]	#Twin Valley Precision E161 [PDF]	BW
Whitestone Pride 505T	BR Royal Lass 7036-19	82
+14744451	+Whitestone LCE Pride F804	205-Day
	#N Bar Emulation EXT [PDF]	FAT
	White Fence Pride H1	730
		+022
BEPD	WEPD	YEPD
+2.2	.35	+53
	.26	+86
	.23	+26
	.13	1114
		+71.79

- ★ This bull from the first calf crop by Whitestone Black Arrow Z101 has individual weaning and yearling ratios of 112 and 101, respectively, along with individual IMF and ribeye ratios of 112 and 101, respectively.
- ★ The dam has a progeny birth ratio of 96 combined with progeny weaning and yearling ratios of 105 and 102, respectively, on two natural calves, and progeny IMF and ribeye ratios of 108 and 102, respectively, on five head.

## 80 TANNER THUNDERBIRD 2374

Birth Date: 3-27-2012 Bull 17322981 Tattoo: 2374

#Sitz Upward 307R [PDF]	#Connealy Onward [PDF]	CWT
Whitestone Thunderbird Z103	Sitz Henrietta Pride 81M	+46
16649389	#Whitestone BLK Bourbon W036	MARB
	#GAR Retail Product [PDF]	+66
	Circle A Black Bourbon 5096	REA
		+64
#GAR Predestined [PDF]	#B/R New Design 036 [PDF]	BW
JLM Blackcap 6973	#+GAR Ext 4206	78
+16082602	+A Plus Blackcap 1179	205-Day
	#GAR Precision 1680	FAT
	+A Plus Blackcap 8102	592
		+032
BEPD	WEPD	YEPD
+2.9	.33	+49
	.23	+93
	.22	+28
	.13	1010
		+89.20

- ★ A son of the Tanner sire, Whitestone Thunderbird Z103.
- ★ This bull is a grandson of the Pathfinder Sires, Sitz Upward 307R and GAR Predestined, from a dam with progeny IMF and ribeye ratios of 116 and 105, respectively, on three head.



Sinclair Lady 2P61 4465 - The dam of Lot 82.

## 81 TANNER THUNDERBIRD 2415

Birth Date: 4-10-2012 Bull 17322979 Tattoo: 2415

#Sitz Upward 307R [PDF]	#Connealy Onward [PDF]	CWT
Whitestone Thunderbird Z103	Sitz Henrietta Pride 81M	+48
16649389	#Whitestone BLK Bourbon W036	MARB
	#GAR Retail Product [PDF]	+51
	Circle A Black Bourbon 5096	REA
		+61
+Rito 4L60 of 2536 BVND 208 [PDF]	#Bon View New Design 208 [PDF]	BW
Prospect Hill Rita 797	GAR Precision 2536	77
+15950986	+GAR New Design 1440	205-Day
	#B/R New Design 036 [PDF]	FAT
	+GAR Ext 614	675
		+004
BEPD	WEPD	YEPD
+2.3	.33	+57
	.23	+104
	.22	+31
	.14	1173
		+89.03

- ★ This bull records individual weaning and yearling ratios of 104 and 106, respectively, along with individual IMF and ribeye ratios of 103 and 108, respectively, from a dam with progeny IMF and ribeye ratios of 113 and 101, respectively, on four head.
- ★ The grandam was the world record-selling full-interest cow.

## 82 TANNER CONSENSUS 2132

Birth Date: 1-15-2012 Bull +17285245 Tattoo: 2132

Connealy Consensus	#KMK Alliance 6595 187 [PDF]	CWT
Connealy Consensus 7229 [PDF]	Blinda of Conanga 004	+37
16447771	Blue Lilly of Conanga 16	MARB
	#Woodhill Admiral 77K [PDF]	+68
	Blue Cash of Conanga 6020	REA
		+36
#N Bar Prime Time D806 [PDF]	#Gardens Prime Time	BW
Sinclair Lady 2P61 4465	N Bar Miss Emulous A404	71
+14311960	+Ideal 4465 of 6807 4286	205-Day
	#DHD Traveler 6807	FAT
	EE 4286 of Ideal 2240 1254	657
		+045
BEPD	WEPD	YEPD
+1.2	.05	+48
	.05	+83
	.05	+19
	.05	1071
		+79.20

- ★ A special feature by the record-selling Connealy Consensus 7229, from a now-deceased donor dam who is the top income-producing cow in the history of Tanner Farms to date.
- ★ This bull has individual IMF and ribeye ratios of 114 and 101, respectively, and his donor dam has a progeny birth ratio of 97 combined with progeny weaning and yearling ratios of 109 and 103, respectively, on three natural calves and a progeny IMF ratio of 105 on 86 head and she is a full sister to Sinclair Net Present Value.
- ★ Recommended for heifers.

## 83 TANNER IMPRESSION 2152

Birth Date: 1-22-2012 Bull +17285286 Tattoo: 2152

Connealy Reflection [PDF]	#Bon View New Design 878 [PDF]	CWT
Connealy Impression [PDF]	Happy Grill of Conanga 6260	+49
15543702	Pearl Pammy of Conanga 194	MARB
	#Vermilion Dateline 7078 [PDF]	+37
	Pearl Jam of Conanga 6114	REA
		+47
#SAV 8180 Traveler 004 [PDF]	#Sitz Traveler 8180 [PDF]	BW
Whitestone Lucy 7014	+Boyd Forever Lady 8003	78
+15653359	Basin Lucy 178E	205-Day
	#Basin Max 602C [PDF]	FAT
	#Basin Lucy 855A	681
		+023
BEPD	WEPD	YEPD
+2.1	.37	+55
	.29	+103
	.29	+29
	.22	1063
		+80.26

- ★ A maternal sister to the top-selling Lot 1 heifer of the 2013 Tanner Spring Sale.
- ★ This bull from the embryo program has individual IMF and ribeye ratios of 115 and 109, respectively, sired by Connealy Impression, from a donor dam selected as the top-selling female of a past Whitestone sale with a progeny weaning ratio of 111 on her first natural calf.
- ★ The famous grandam ranks among the breed's top income-producing cows.



Whitestone Lucy 7014 - The dam of Lot 83.



# Tanner Missing Link Bulls



Tanner Missing Link 2280 - Lot 84

## 84 TANNER MISSING LINK 2280

Birth Date: 2-21-2012 Bull +17307895 Tattoo: 2280

OCC Headliner 661H #+OCC Emblazon 854E [PDF] CWT  
OCC Missing Link 830M #+OCC Juanada 858F +26  
14456399 +OCC Dixie Erica 946K #OCC Glory 950G MARB  
+OCC Dixie Erica 816B +.05

#Bon View New Design 878 [PDF] #B/R New Design 036 [DOC] BW REA  
SAV Pride 3135 67 +.46  
14455329 #SAV Pride 8169 Bon View Gammer 85 205-Day FAT  
#RR Scotchcap 9440 670 +.021  
+SAV Emulation Pride 5015

FOR Enrollment Phase 365								365	7021
BEPD		WEPD		YEPD		MILK		365-Day	\$B
+8	.37	+40	.29	+76	.29	+29	.22	1043	+50.64

★ A maternal brother to Lots 54 through 57 from the Tanner featured donor, SAV Pride 3135, who is the picture cow of the Angus breed in ABS Global advertising and was selected as a featured donor in a past SAV sale with a progeny weaning ratio of 110 on four natural calves and a progeny yearling ratio of 115 on one head.

★ Recommended for heifers.

## 85 TANNER MISSING LINK 2294

Birth Date: 2-24-2012 Bull +17307877 Tattoo: 2294

OCC Headliner 661H #+OCC Emblazon 854E [PDF] CWT  
OCC Missing Link 830M #+OCC Juanada 858F +1.35  
14456399 +OCC Dixie Erica 946K #OCC Glory 950G MARB  
+OCC Dixie Erica 816B +1.11

#SAV 8180 Traveler 004 [PDF] #Sitz Traveler 8180 [PDF] BW REA  
Tanner Gammer 850 89 +1.55  
+15659074 Bon View Gammer 85 #Bon View Bando 598 [PDF] 205-Day FAT  
Bon View Gammer 233 768 +1.037

Self View Summer 200								100	11000
BEPD		WEPD		YEPD		MILK		365-Day	\$B
+1.8	.05	+48	.05	+84	.05	+27	.05	1184	+60.19

★ This impressive bull produced in the embryo program is the result of mating OCC Missing Link 830M with Tanner Gammer 850 who records a progeny birth ratio of 94 with a progeny weaning ratio of 105 on two calves.

★ The dam of this bull is a maternal sister to both Bon View New Design 878 and Woodhill Foresight, descending from the high income-producing Bon View Gammer 85.

★ Recommended for heifers.



SAV Pride 3135 - The dam of Lot 84.

## 86 TANNER MISSING LINK 2214

Birth Date: 2-8-2012 Bull 17317553 Tattoo: 2214

OCC Headliner 661H #+OCC Emblazon 854E [PDF] CWT  
OCC Missing Link 830M #+OCC Juanada 858F +33  
14456399 +OCC Dixie Erica 946K #OCC Glory 950G MARB  
+OCC Dixie Erica 816B +.19

#SAV Net Worth 4200 [PDF] #SAV 8180 Traveler 004 [PDF] BW REA  
Boyd Forever Lady 8132 +SAV May 2410 70 +.64  
16186290 +Boyd Forever Lady 466 #Sitz Alliance 6595 [PDF] 205-Day FAT  
+Boyd Forever Lady 7120 612 +.027

BEPD		WEPD		YEPD		MILK		365-Day	\$B
+6	.35	+48	.27	+87	.27	+26	.20	1030	+64.60

★ A blending of the Forever Lady and Dixie Erica families by OCC Missing Link 830M, from a dam backed by the Pathfinder Sires, SAV Net Worth 4200 and Sitz Alliance 6595.

★ Recommended for heifers.



Tanner Missing Link 2294 - Lot 85

# Tanner Angus Bulls



Tanner Missing Link A927 - Lot 87

## 87 TANNER MISSING LINK A927

Birth Date: 12-24-2011

Bull 17283886

Tattoo: A927

OCC Missing Link 830M 14456399	OCC Headliner 661H		#+OCC Emblazon 854E [DOF]		CWT			
	+OCC Dixie Erica 946K		#+OCC Juanada 858F		+16			
			#OCC Glory 950G		MARB			
			+OCC Dixie Erica 816B		+16			
Tanner Erica 313Z 16706321	Koupals B&B Traveler 4062		#SAV 8180 Traveler 004 [DOF+DOF]		BW			
	Whitestone Erica 507T		Koupal Voltage 5016		65			
			+Whitestone Survivor N088		205-Day			
			+Toebben Erica 156J		640			
					\$B			
BEPD		WEPD		YEPD	MILK	365-Day	947	+46.03
+1.7	.36	+41	.27	+67	.27	+22	.19	

- ★ This son of the proven sire, OCC Missing Link 830M, is from a dam backed by the noted sires, Koupals B&B Traveler 4062 and Whitestone Survivor N088.

## 88 TANNER MISSING LINK A929

Birth Date: 12-24-2011

Bull +17289413

Tattoo: A929

<b>OCC Missing Link 830M</b> <b>14456399</b>	OCC Headliner 661H		#+OCC Emblazon 854E [PDF]		<b>CWT</b>
	+OCC Dixie Erica 946K		#+OCC Juanada 858F		<b>+20</b>
			#OCC Glory 950G		<b>MARB</b>
			+OCC Dixie Erica 816B		<b>+07</b>
<b>Whitestone Anita R270</b> <b>+14581597</b>	#+Leachman Right Time		#N Bar Emulation EXT [PDF]		<b>BW</b>
	RC Anita T Bando 918903		Leachman Erica 0025		<b>71</b>
			#Tehama Bando 155 [PDF]		<b>+54</b>
			RC Traveling Ann 8903		<b>205-Day</b>
				<b>720</b>	<b>FAT</b>
				<b>+001</b>	<b>\$B</b>
				<b>365-Day</b>	<b>+01</b>
				<b>-1</b>	<b>+49.11</b>

- ★ A blending of the Anita and Dixie Erica families by OCC Missing Link 830M from a donor dam who is a maternal sister to BCC Bushwacker 41-93.
- ★ This bull has an individual birth ratio of 92 combined with an individual weaning ratio of 105, from a dam with a progeny birth ratio of 99 combined with a progeny weaning ratio of 102 on three natural calves and a progeny IMF ratio of 105 on 35 head.
- ★ Recommended for heifers.



Tanner Missing Link A929 - Lot 88

## 89 TANNER MISSING LINK A948

Birth Date: 12-29-2011

Bull 17289393

Tattoo: A948

OCC Missing Link 830M 14456399	OCC Headliner 661H		#+OCC Emblazon 854E [PDF]		CWT				
	+OCC Dixie Erica 946K		#+OCC Juanada 858F		+31				
			#OCC Glory 950G		MARB				
			+OCC Dixie Erica 816B		+09				
Tanner Wintress 311Z 16678371	+Tanner EXT U23 W745		#N Bar Emulation EXT [PDF]		BW	REA			
			+Sinclair Lady 2P61 4465		58	+57			
	Tanner Wintress X125		+HA Perfect Image 4709		205-Day	FAT			
			#Koupals Wintress 0187		774	+014			
					365-Day	\$B			
BEPD		WEPD		YEPD		MILK			
+1	.36	+52	.27	+89	.27	+30	.18	1123	+58.87

- ★ A calving-ease herd sire prospect by OCC Missing Link 830M with an individual birth ratio of 89 combined with individual weaning and yearling ratios of 117 and 111, respectively, along with an individual ribeye ratio of 105 as his dam's first calf.
- ★ Recommended for heifers.

## 90 TANNER MISSING LINK 2252

Birth Date: 2-18-2012

Bull 17320274

Tattoo: 2252

OCC Missing Link 830M 14456399	OCC Headliner 661H		#+OCC Emblazon 854E [pdf]		CWT				
			#+OCC Juanada 858F		+29				
	+OCC Dixie Erica 946K		#OCC Glory 950G		MARB				
			+OCC Dixie Erica 816B		+26				
Tanner Rita X373 +16409771	#TC Total 410 [pdf]		#Bon View New Design 208 [pdf]		BW	REA			
			+TC Erica Eileen 2047		65	+1.01			
	RAY 2V1 5101		#Rito 2V1 of 2536 1407 [pdf]		205-Day	FAT			
			+Ray E161 3120		667	+0.003			
					365-Day	\$B			
					- 3	+71.52			
BEPD		WEPD		YEPD		MILK		365-Day	
- 3	35	+54	27	+96	27	+26	21	1125	+71.52

- ★ A calving-ease herd sire prospect by OCC Missing Link 830M combining a modest individual birth ratio of 85 with individual weaning and yearling ratios of 103 and 106, respectively, and an individual ribeye ratio of 111.
- ★ The dam of this bull has a progeny birth ratio of 91 combined with progeny weaning and yearling ratios of 105 and 106, respectively, and progeny IMF and ribeye ratios of 103 and 110, respectively, on two calves.
- ★ Recommended for heifers.

## 91 TANNER MISSING LINK 2279

Birth Date: 2-21-2012

Bull +17307897

Tattoo: 2279

OCC Missing Link 830M 14456399	OCC Headliner 661H		#+OCC Emblazon 854E [PDF]		CWT				
	+OCC Dixie Erica 946K		#+OCC Juanada 858F		+20				
			#OCC Glory 950G		MARB				
			+OCC Dixie Erica 816B		+03				
SCC Eriskay 1E4 +14037119	#Papa Equator 2928		#+Papa Power 096		BW	REA			
			#Papa Envious Blackbird 8849		80	+39			
	PLD Eriskay Papa 011		#Papa Rito T Intense DHD 6844		205-Day	FAT			
			#Papa Eriskay 7862		713	-034			
BEPD		WEPD		YEPD		MILK	365-Day	\$B	
+1.8	.36	+45	.29	+75	.28	+18	.23	1059	+48.61

- ★ This son of OCC Missing Link 830M was produced from a dam who is a full sister to Papa Universe 515.
- ★ The dam of this bull was produced in the embryo program at Sinclair Cattle Company.

## 92 TANNER KABOOM 2361

Birth Date: 3-20-2012

Bull 17317563

Tattoo: 2361

#Baldridge Kaboom K243 KCF		#Jauer 353 Traveler 589 27		CWT
Mohnen Kaboom 268		Pleasantia of Conanga 736		+29
#16223763		#Clearwater Paf Seville 1977		MARB
#Mohnen Jilt 910		Mohnen Jilt 143		+32
#Rally New Frontier 5233		#B/R New Frontier 095 [PDF]		BW
Evenson Queen 5199		Rally Tibbie 5380		83
#15153463		#WK Online		205-Day
#Evenson Queen 0107		#Evenson Queen 6188		FAT
				579
				+010
				365-Day
				\$B
				+2.7
				+62.85

- ★ An outcross herd sire prospect sired by a full brother to Mohnen Dynamite, from a dam bred in the Evenson herd by the high-performance Pathfinder Sire Rally New Frontier 5233.
- ★ The grandam is a second-generation Pathfinder Dam.



# Tanner Angus Bulls



Tanner Jetset 2305 - Lot 93

**93 TANNER JETSET 2305**  
 Birth Date: 3-1-2012 Bull 17321388 Tattoo: 2305

OCC Jet Stream 825J #+OCC Emblazon 854E [PDF] CWT  
 Duff Jetset 7122 [PDF] OCC Juanada 968G +26  
 +15944145 OCC Revolution Rose 887H Rito 9Q4 of 1H1 Sasquatch MARB  
 +OCC Revolution Rose 919E +.38

#GAR Predestined [PDF] #B/R New Design 036 [PDF] BW REA  
 Whitestone Katinka X128 #+GAR Ext 4206 80 +.43  
 16078442 B&B Katinka 5042 #Hoff Limited Edition SC 594 205-Day FAT  
 Roth Katinka 1292 695 +.024

BEPD	WEPD	YEPD	MILK	365-Day	\$B
+2.5	.34	+54	.26	+89	.25
+17	.13	1122	+64.68		

★ This son of the Accelerated Genetics sire, Duff Jetset 7122, has individual weaning and yearling ratios of 107 and 105, respectively.

**94 TANNER NEW FRONTIER 2424**  
 Birth Date: 4-20-2012 Bull 17313025 Tattoo: 2424

#B/R New Design 036 [PDF] #VDAR New Trend 315 [PDF] CWT  
 B/R New Frontier 095 [PDF] B/R Blackcap Empress 76 +46  
 #+13588640 White Fence Pride H1 #Connely Dateline MARB  
 #Pleasant Pill of Conanga +.67

#+HSAF Bando 1961 [PDF] #+SAF 598 Bando 5175 [PDF] BW REA  
 Whitestone Toni X012 #+JCS Miss Cheyenne 196 83 +.33  
 16078392 Whitestone Toni 6027 #CAR Duke 104 205-Day FAT  
 B&B Toni 4038 707 -.002

BEPD	WEPD	YEPD	MILK	365-Day	\$B
+4.1	.37	+51	.28	+97	.28
+22	.22	1211	+89.83		

★ This bull is backed by the Accelerated Genetics Pathfinder Sires, B/R New Frontier 095 and HSAF Bando 1961, to record individual weaning and yearling ratios of 108 and 112, respectively, along with individual IMF and ribeye ratios of 121 and 102, respectively.

★ The dam has a progeny weaning ratio of 104 on two calves.

**95 TANNER AMBUSH A902**  
 Birth Date: 12-16-2011 Bull 17289383 Tattoo: A902

#Rockn D Ambush 1531 [PDF] #Paramont Ambush 2172 [PDF] CWT  
 B/R Ambush 28 [PDF] MS Blackcap Band of RD 1301 +38  
 #+14188956 +B/R Ruby of Tiffany 8250 #N Bar Emulation EXT [PDF] MARB  
 B/R Ruby of Tiffany 5113 +.95

#GAR Predestined [PDF] #B/R New Design 036 [PDF] BW REA  
 Monarch Primrose 8525 #+GAR Ext 4206 83 +.70  
 +16210381 +Roth Primrose 1247 #Twin Valley Precision E161 [PDF] 205-Day FAT  
 N Bar Primrose 2424 684 +.002

BEPD	WEPD	YEPD	MILK	365-Day	\$B
+3.5	.36	+55	.28	+91	.28
+23	.22	999	+95.73		

★ This bull is bred for carcass genetics and records individual weaning and yearling ratios of 116 and 101, respectively, along with an individual IMF ratio of 113, from a dam with a progeny weaning ratio of 108 on two calves.



Tanner Advocate 2105 - Lot 96

**96 TANNER ADVOCATE 2105**  
 Birth Date: 1-4-2012 Bull 17283983 Tattoo: 2105

#SS Objective T510 OT26 [PDF] #SS Traveler 6807 T510 [PDF] CWT  
 Whitestone Advocate [PDF] SS Miss Rita R011 7R8 +20  
 +16095113 +Sinclair Lady 2P61 4465 #N Bar Prime Time D806 [PDF] MARB  
 +Ideal 4465 of 6807 4286 +.68

#SAV Net Worth 4200 [PDF] #SAV 8180 Traveler 004 [PDF] BW REA  
 Tanner Erica Eileen 958Y +SAV May 2410 59 +.36  
 16689251 +Whitstone Erica Eileen 609T 205-Day FAT  
 +TC Erica Eileen 6045 691 +.023

BEPD	WEPD	YEPD	MILK	365-Day	\$B
-.1	.36	+50	.27	+80	.26
+28	.15	973	+67.99		

★ A calving-ease herd sire prospect by the ABS Global calving-ease sire, Whitestone Advocate.

★ This bull records an individual birth ratio of 90 combined with individual weaning and IMF ratios of 105 as the first calf from a dam by SAV Net Worth 4200.

★ Recommended for heifers.

**97 TANNER ADVOCATE 2141**  
 Birth Date: 1-17-2012 Bull 17288347 Tattoo: 2141

#SS Objective T510 OT26 [PDF] #SS Traveler 6807 T510 [PDF] CWT  
 Whitestone Advocate [PDF] SS Miss Rita R011 7R8 +28  
 +16095113 +Sinclair Lady 2P61 4465 #N Bar Prime Time D806 [PDF] MARB  
 +Ideal 4465 of 6807 4286 +.68

#SAV 8180 Traveler 004 [PDF] #Sitz Traveler 8180 [PDF] BW REA  
 Tanner Blackcap W782 +Boyd Forever Lady 8003 77 +.27  
 +16026030 +Bricton Blackcap 253 #+B/R New Frontier 095 [PDF] 205-Day FAT  
 +ILC Blackcap 0203 583 +.024

BEPD	WEPD	YEPD	MILK	365-Day	\$B
+1.5	.35	+51	.26	+89	.25
+23	.15	1002	+74.25		

★ This son of the ABS Global sire, Whitestone Advocate, combines an individual birth ratio of 98 with individual weaning and yearling ratios of 99 and 101, respectively, and an individual IMF ratio of 107, from a dam by SAV 8180 Traveler 004.

★ Recommended for heifers.



Tanner Ambush A902 - Lot 95





# Tanner Lookout Bulls

## 103 TANNER LOOKOUT 2163

Birth Date: 1-31-2012

Bull 17288356

Tattoo: 2163

+BC Lookout 7024 [PDF]		OCC Legend 616L [PDF]	CWT
Tanner Lookout 605Y		Gibbet Hill Mignonne E37	+22
+16603613 +Three Trees Lucy T0082		#+Woodhill Foresight [PDF]	MARB
		+Basin Lucy 3059	+60
#+B/R New Frontier 095 [PDF]		#B/R New Design 036 [PDF]	BW
Tanner Forever Lady 115Z		White Fence Pride H1	79
16692277 Tanner Forever Lady 206		+TPF Right Time E573	+28
		Tanner Forever Lady 273	205-Day
			FAT
			678
			+013
			\$B
			915
			+67.63

- ★ A powerful son of Tanner Lookout 605Y with an individual weaning ratio of 103 combined with an individual IMF ratio of 105 as the first calf from a dam by the Pathfinder Sire B/R New Frontier 095.



Tanner Lookout 2163 - Lot 103

## 104 TANNER LOOKOUT 2345

Birth Date: 3-12-2012

Bull 17313013

Tattoo: 2345

+BC Lookout 7024 [PDF]		OCC Legend 616L [PDF]	CWT
Tanner Lookout 605Y		Gibbet Hill Mignonne E37	+32
+16603613 +Three Trees Lucy T0082		#+Woodhill Foresight [PDF]	MARB
		+Basin Lucy 3059	+67
#+B/R New Frontier 095 [PDF]		#B/R New Design 036 [PDF]	BW
Tanner Rita 1960Y		White Fence Pride H1	53
+16682465 +EXAR Rita 2016		#Bon View New Design 1407 [PDF]	+58
		+GAR Ext 544	205-Day
			FAT
			577
			+0
			\$B
			958
			+84.17

- ★ This bull is a grandson of the proven sires, BC Lookout 7024 and B/R New Frontier 095, sired by Tanner Lookout 605Y.
- ★ Recommended for heifers.

## 107 TANNER LOOKOUT 2416

Birth Date: 4-11-2012

Bull 17313024

Tattoo: 2416

+BC Lookout 7024 [PDF]		OCC Legend 616L [PDF]	CWT
Tanner Lookout 605Y		Gibbet Hill Mignonne E37	+22
+16603613 +Three Trees Lucy T0082		#+Woodhill Foresight [PDF]	MARB
		+Basin Lucy 3059	+31
#+OCC Emblazon 854E [PDF]		#DHD Traveler 6807	BW
SH Lady 9313		Dixie Erica of CH 1019	69
+16857635 +Majesty 939 of 5439 4286		#Ideal 5439 of 1418 2455	+49
		EE 4286 of Ideal 2240 1254	205-Day
			FAT
			550
			+0.036
			\$B
			950
			+57.65

- ★ This calving-ease herd sire prospect is from a dam by the Pathfinder Sire OCC Emblazon 854E, stemming from a high-selling grandam who is a maternal sister to the breed's feed-efficiency matriarch.
- ★ Recommended for heifers.

## 105 TANNER LOOKOUT 2220

Birth Date: 2-10-2012

Bull 17312983

Tattoo: 2220

+BC Lookout 7024 [PDF]		OCC Legend 616L [PDF]	CWT
Tanner Lookout 605Y		Gibbet Hill Mignonne E37	+32
+16603613 +Three Trees Lucy T0082		#+Woodhill Foresight [PDF]	MARB
		+Basin Lucy 3059	+59
+Tanner EXT U23 W745		#N Bar Emulation EXT [PDF]	BW
Tanner Pride 236Z		+Sinclair Lady 2P61 4465	80
16678365 Tanner Pride X189		#+B/R New Frontier 095 [PDF]	+40
		Pride P027 of Whitestone	205-Day
			FAT
			647
			+0.032
			\$B
			1137
			+75.63

- ★ This bull has individual weaning and yearling ratios of 109 combined with individual IMF and ribeye ratios of 109 and 101, respectively, as his dam's first calf.

## 108 TANNER LOOKOUT 2244

Birth Date: 2-17-2012

Bull 17312991

Tattoo: 2244

+BC Lookout 7024 [PDF]		OCC Legend 616L [PDF]	CWT
Tanner Lookout 605Y		Gibbet Hill Mignonne E37	+30
+16603613 +Three Trees Lucy T0082		#+Woodhill Foresight [PDF]	MARB
		+Basin Lucy 3059	+55
#SAV Net Worth 4200 [PDF]		#SAV 8180 Traveler 004 [PDF]	BW
Tanner Blackbird 954Y		+SAV May 2410	77
+16713238 SAV Blackbird 3155		#Bon View New Design 878 [PDF]	+48
		SAV Blackbird 1082	205-Day
			FAT
			613
			+0.048
			\$B
			1002
			+71.55

- ★ A grandson of the Genex/CRI sires, BC Lookout 7024 and SAV Net Worth 4200, with an individual weaning ratio of 103, produced as his dam's first calf.
- ★ The grandam is the Tanner featured donor, SAV Blackbird 3155.

## 106 TANNER LOOKOUT 2239

Birth Date: 2-16-2012

Bull 17312989

Tattoo: 2239

+BC Lookout 7024 [PDF]		OCC Legend 616L [PDF]	CWT
Tanner Lookout 605Y		Gibbet Hill Mignonne E37	+17
+16603613 +Three Trees Lucy T0082		#+Woodhill Foresight [PDF]	MARB
		+Basin Lucy 3059	+45
Koupals B&B Traveler 4062		#SAV 8180 Traveler 004 [PDF]	BW
Tanner Elba 244Z		Koupal Voltage 5016	50
16678366 Koupals Elba 0130		#Sitz SLS Rainmaker 7596	+04
		Beefland Elba K245	205-Day
			FAT
			596
			+0.029
			\$B
			1030
			+52.41

- ★ A calving-ease herd sire prospect by Tanner Lookout 605Y with an alternative pedigree.
- ★ This bull records a modest individual birth ratio of 77 as his dam's first calf.
- ★ Recommended for heifers.



Tanner Lookout 2244 - Lot 108

# Tanner Angus Bulls



Tanner On Target 2411 - Lot 111

## 111 TANNER ON TARGET 2411

Birth Date: 4-10-2012

Bull 17320263

Tattoo: 2411

#Boyd On Target 1083 [PDF] #+SAF 598 Bando 5175 [PDF]  
Whitestone ON Target V315 +Boyd Forever Lady 7095  
+15446172 Bon View Gammer 85 #Bon View Bando 598 [PDF]  
Bon View Gammer 233

#SAV Final Answer 0035 [PDF] #Sitz Traveler 8180 [PDF]  
Tanner Evergreen Y428 SAV Emulous 8145  
16322111 Tanner Evergreen 787 #+B/R New Frontier 095 [PDF]  
#Evergreen P016 of Whitestone

BEPD	WEPD	YEPD	MILK	365-Day	\$B
-.6	.34	+.52	.24	+.96	.23
+.26	.13	1219	+.78.51		

★ This calving-ease herd sire prospect has an individual birth ratio of 86 combined with individual weaning and yearling ratios of 107 and 109, respectively, and an individual IMF ratio of 108.

★ The dam is by SAV Final Answer 0035 with a progeny birth ratio of 96 combined with progeny weaning and yearling ratios of 109 and 111, respectively, on two calves.

★ Recommended for heifers.

## 109 TANNER TRAVELER 2364

Birth Date: 3-24-2012

Bull 17313077

Tattoo: 2364

#SAV 8180 Traveler 004 [PDF] #Sitz Traveler 8180 [PDF]  
Koupals B&B Traveler 4062 +Boyd Forever Lady 8003  
14824697 Koupal Voltage 5016 Basic Black Albert  
Beefland Voltage 005

#OCC Juneau 807J [PDF] #+OCC Emblazon 854E [PDF]  
Koupals Ebonette 326 OCC Dixie Erica 903E  
14484192 Beefland Ebonette 8182 #Traveler 436B of JRS  
Beefland Ebonette K537

BEPD	WEPD	YEPD	MILK	365-Day	\$B
+.15	.36	+.31	.26	+.45	.25
+.13	.17	804	+.20.88		

★ A grandson of the Pathfinder Sires, SAV 8180 Traveler 004 and OCC Juneau 807J.

## 110 TANNER TRAVELER 2371

Birth Date: 3-26-2012

Bull 17313019

Tattoo: 2371

#SAV 8180 Traveler 004 [PDF] #Sitz Traveler 8180 [PDF]  
Koupals B&B Traveler 4062 +Boyd Forever Lady 8003  
14824697 Koupal Voltage 5016 Basic Black Albert  
Beefland Voltage 005

#OCC Glory 950G +OCC Exodus 712E  
Koupals Queenie 38 OCC Dixie Erica 971E  
14484250 Beefland Queenie 7225 #Traveler 436B of JRS  
Beefland Queenie K 4105

BEPD	WEPD	YEPD	MILK	365-Day	\$B
-.9	.36	+.33	.26	+.61	.25
+.17	.1039	+.45.55			

★ A moderate birth weight herd sire prospect by Koupals B&B Traveler 4062, from a dam by the Pathfinder Sire OCC Glory 950G.

★ Recommended for heifers.



Tanner On Target 2413 - Lot 113

## 112 TANNER ON TARGET 2324

Birth Date: 3-5-2012

Bull 17320287

Tattoo: 2324

#Boyd On Target 1083 [PDF] #+SAF 598 Bando 5175 [PDF]  
Whitestone ON Target V315 +Boyd Forever Lady 7095  
+15446172 Bon View Gammer 85 #Bon View Bando 598 [PDF]  
Bon View Gammer 233

Koupals B&B Initiative 608 #+SAV Initiative 4406 [PDF]  
Tanner Ellnora 9086 B&B Toni 1029  
16419282 B&B Ellnora 6018 #+GAR Exaltation 3144  
B&B Ruth 4035

BEPD	WEPD	YEPD	MILK	365-Day	\$B
-1.6	.34	+.48	.24	+.72	.23
+.19	.12	828	+.62.18		

★ A low birth weight calving-ease bull with an outcross pedigree and an individual birth ratio of 75.

★ Recommended for heifers.

## 113 TANNER ON TARGET 2413

Birth Date: 4-10-2012

Bull 17320264

Tattoo: 2413

#Boyd On Target 1083 [PDF] #+SAF 598 Bando 5175 [PDF]  
Whitestone ON Target V315 +Boyd Forever Lady 7095  
+15446172 Bon View Gammer 85 #Bon View Bando 598 [PDF]  
Bon View Gammer 233

#BC Marathon 7022 [PDF] OCC Kirby 633K  
7L Lady 8403 Gibbet Hill Mignonne E37  
+16417698 +Bohi Lady 1175 #N Bar Emulation EXT [PDF]  
+Ideal 4465 of 6807 4286

BEPD	WEPD	YEPD	MILK	365-Day	\$B
+.19	.33	+.43	.24	+.75	.23
+.21	.14	991	+.73.33		

★ A young herd sire prospect by Whitestone On Target V315, from a dam who records a progeny weaning ratio of 102 on two calves.

## 114 TANNER PREDESTINED 2370

Birth Date: 3-26-2012

Bull 17320295

Tattoo: 2370

#GAR Predestined [PDF] #B/R New Design 036 [PDF]  
Whitestone Predestined X056 #+GAR Ext 4206  
+16094215 Bon View Gammer 85 #Bon View Bando 598 [PDF]  
Bon View Gammer 233

+Whitestone Survivor N088 #BCC Bushwacker 41-93 [PDF]  
Tanner Rita T609 MB Rachel 2173  
15392477 +Whitestone Rita 420R #SS Traveler 6807 T510 [PDF]  
Whitestone Miss Rita J118

BEPD	WEPD	YEPD	MILK	365-Day	\$B
-.9	.35	+.46	.25	+.84	.18
+.24	.15	1018	+.69.14		

★ A calving-ease herd sire prospect backed by Whitestone breeding, from a low birth weight family.

★ Recommended for heifers.



# Tanner Angus Bulls

## 115 TANNER PREDESTINED 2376

Birth Date: 3-27-2012

Bull 17320260

Tattoo: 2376

#GAR Predestined [doc]	#B/R New Design 036 [doc]	CWT
Whitestone Predestined X056	+GAR Ext 4206	+27
+16094215 Bon View Gammer 85	#Bon View Bando 598 [doc]	MARB
	Bon View Gammer 233	+65

+BCC New Design 036 2156-149	#B/R New Design 036 [doc]	BW
B&B Prospector Pride 5083	+GAR 6807 Traveler 2156	71
15111520 B&B Prospector Pride 1047	#BCC Bushwacker 41-93 [doc]	205-Day
	#Koupal Prospector Pride 502	706
		FAT
		+003

BEPD	WEPD	YEPD	MILK	365-Day	\$B
+4	.35	+40	.25	+69	.23
				+25	.15
				1120	+73.89

★ This moderate birth weight herd sire prospect has individual weaning and yearling ratios of 104 and 101, respectively, combined with individual IMF and ribeye ratios of 111 and 103, respectively, from a dam with a progeny weaning ratio of 104 on six calves and a progeny IMF ratio of 106 on five head.

★ Recommended for heifers.



Tanner Predestined 2376 - Lot 115

## 116 TANNER PREDESTINED 2375

Birth Date: 3-27-2012

Bull 17320259

Tattoo: 2375

#GAR Predestined [doc]	#B/R New Design 036 [doc]	CWT
Whitestone Predestined X056	+GAR Ext 4206	+37
+16094215 Bon View Gammer 85	#Bon View Bando 598 [doc]	MARB
	Bon View Gammer 233	+65

+B/R New Frontier 095 [doc]	#B/R New Design 036 [doc]	BW
Tanner Mamie Gal 832	White Fence Pride H1	71
15724250 +Whitestone Mamie Gal 506R	#Whitestone Precision H141 [doc]	205-Day
	+Mamie Gal 057	579
		FAT
		+001

BEPD	WEPD	YEPD	MILK	365-Day	\$B
+0	.34	+36	.25	+77	.23
				+23	.15
				1037	+85.63

★ A blending of carcass genetics with moderate birth weight.

★ Recommended for heifers.

## 119 TANNER PREDESTINED 2276

Birth Date: 2-21-2012

Bull 17321608

Tattoo: 2276

#B/R New Design 036 [doc]	#VDAR New Trend 315 [doc]	CWT
GAR Predestined [doc]	B/R Blackcap Empress 76	+30
#13395344 +GAR Ext 4206	#N Bar Emulation EXT [doc]	MARB
	+GAR 6807 Traveler 1432	+86

#TC Total 410 [doc]	#Bon View New Design 208 [doc]	BW
Tanner Evergreen Y471	+TC Erica Eileen 2047	89
16322136 Tanner Evergreen P016 V004	#N GAR Integrity [doc]	205-Day
	#Evergreen P016 of Whitestone	651
		FAT
		+020

BEPD	WEPD	YEPD	MILK	365-Day	\$B
+4.7	.37	+49	.28	+88	.28
				+23	.22
				1030	+85.94

★ This bull is bred for stacked carcass genetics, backed by three consecutive generations of New Design sires by GAR Predestined, from a dam backed by TC Total 410 and GAR Integrity.

## 117 TANNER PREDESTINED 2420

Birth Date: 4-13-2012

Bull 17320265

Tattoo: 2420

#GAR Predestined [doc]	#B/R New Design 036 [doc]	CWT
Whitestone Predestined X056	+GAR Ext 4206	+25
+16094215 Bon View Gammer 85	#Bon View Bando 598 [doc]	MARB
	Bon View Gammer 233	+53

+Twin Valley Fix IT 826 1080	#Schoenes Fix It 826 [doc]	BW
Tanner Euthalla 709	Woodhill Evergreen 58-1303	65
15659042 Twin Valley Euthalla 2981	Barrineau Ambush 5337	205-Day
	Flint River 54 Euthalla 612	666
		FAT
		+015

BEPD	WEPD	YEPD	MILK	365-Day	\$B
-1.8	.33	+36	.23	+69	.21
				+24	.13
				1079	+64.58

★ A low birth weight bull by Whitestone Predestined X056.

★ Recommended for heifers.

## 120 TANNER GRADE UP 2107

Birth Date: 1-4-2012

Bull 17283942

Tattoo: 2107

#GAR Predestined [doc]	#B/R New Design 036 [doc]	CWT
Thomas Grade Up 6849 [doc]	+GAR Ext 4206	+24
+15356040 Thomas Miss Lucy 4206	#CA Future Direction 5321 [doc]	MARB
	+Thomas Miss Lucy 0671	+74

+BT Right Time 24J [doc]	#Leachman Right Time	BW
BoBo Princess 9757	Sitz Everelda Entense 1905	95
+16798493 PAF Princess Travelf 6686	#DHD Traveler 6807	205-Day
	PAF Princess Ann 4120	632
		FAT
		+032

BEPD	WEPD	YEPD	MILK	365-Day	\$B
+5.9	.35	+45	.27	+82	.26
				+29	.17
				910	+72.14

★ A high-marbling prospect by Thomas Grade Up 6849, from a dam by BT Right Time 24J.



Tanner Grade Up 2107 - Lot 120

## 118 TANNER PREDESTINED 2427

Birth Date: 4-23-2012

Bull 17320266

Tattoo: 2427

#GAR Predestined [doc]	#B/R New Design 036 [doc]	CWT
Whitestone Predestined X056	+GAR Ext 4206	+33
+16094215 Bon View Gammer 85	#Bon View Bando 598 [doc]	MARB
	Bon View Gammer 233	+55

#GAR Retail Product [doc]	#GAR Precision 1680	BW
Sandpoint Barbara 7067	+GAR Ext 4927	73
15844121 +GAR 6807 Traveler 2865	#DHD Traveler 6807	205-Day
	+GAR Ext 73	706
		FAT
		+008

BEPD	WEPD	YEPD	MILK	365-Day	\$B
+6	.34	+47	.25	+92	.23
				+24	.15
				1200	+76.09

★ This bull has individual weaning and yearling ratios of 104 and 108, respectively, from a dam who records a progeny birth ratio of 99 combined with progeny weaning and yearling ratios of 99 and 104, respectively, and progeny IMF and ribeye ratios of 105 and 103, respectively, on three calves.

★ Recommended for heifers.

# Featuring Sons of These Leading Sires



*SAT Final Answer 0035* - 18 Sons and 9 Grandsons Sell.

BEPD	WEPD	YEPD	MILK	
-1.0	.98	+60	.97	+103

CWT
+16
MARB
+.59
REA
+.59
FAT
+.094
\$B
+56.05



*Sitz Upward 307R* - 20 Sons and 8 Grandsons Sell.

BEPD	WEPD	YEPD	MILK	
+2.5	.98	+70	.97	+133

CWT
+84
MARB
+.42
REA
+.68
FAT
+.012
\$B
+88.81



# Featuring Sons of These Leading Sires



CWT  
+42  
MARB  
+.41  
REA  
+1.01  
FAT  
+.066  
\$B  
+70.62

BEPD WEPD YEPD MILK  
+2.0 .96 +60 .95 +110 .93 +34 .81

*SAV Pioneer 7301*



CWT  
+27  
MARB  
+.47  
REA  
+.33  
FAT  
+.005  
\$B  
+80.35

BEPD WEPD YEPD MILK  
+1.8 .81 +54 .72 +91 .61 +33 .23

*Whitestone Black Arrow L101*



CWT  
+20  
MARB  
-.15  
REA  
+.97  
FAT  
-.005  
\$B  
+42.23

BEPD WEPD YEPD MILK  
-.1 .94 +47 .91 +79 .88 +25 .78

*OCC Missing Link 830/M*



CWT  
+20  
MARB  
+.30  
REA  
+.95  
FAT  
-.018  
\$B  
+65.97

BEPD WEPD YEPD MILK  
+.3 .98 +57 .96 +97 .95 +25 .89

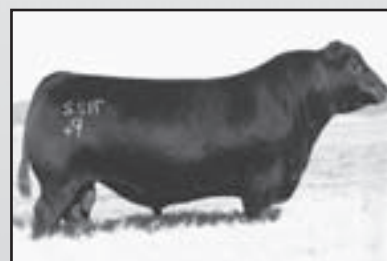
*SAV Bismarck 5682*



CWT  
+17  
MARB  
+.93  
REA  
+.66  
FAT  
+.038  
\$B  
+72.81

BEPD WEPD YEPD MILK  
+.3 .79 +52 .69 +80 .60 +25 .35

*Whitestone Advocate*



CWT  
+15  
MARB  
+.08  
REA  
+.66  
FAT  
+.015  
\$B  
+43.90

BEPD WEPD YEPD MILK  
+1.7 .75 +51 .65 +78 .56 +12 .25

*Duff Jetset 7122*



CWT  
+52  
MARB  
-.03  
REA  
+.98  
FAT  
-.024  
\$B  
+74.58

BEPD WEPD YEPD MILK  
+3.4 .90 +67 .85 +110 .80 +34 .28

*SAV Brand Name 9115*



CWT  
+27  
MARB  
+.74  
REA  
+.28  
FAT  
+.029  
\$B  
+75.45

BEPD WEPD YEPD MILK  
+3.5 .96 +59 .93 +106 .91 +12 .56

*SAV Iron Mountain 8066*



CWT  
+78  
MARB  
+.38  
REA  
+.85  
FAT  
+.041  
\$B  
+88.32

BEPD WEPD YEPD MILK  
+4.9 .92 +79 .88 +142 .83 +31 .38

*W/MR Timeless 458*



CWT  
+49  
MARB  
+.63  
REA  
+.42  
FAT  
+.049  
\$B  
+84.75

BEPD WEPD YEPD MILK  
+4.7 .98 +57 .97 +108 .95 +30 .93

*SAV Net Worth 4200*



CWT  
+49  
MARB  
+.32  
REA  
+.35  
FAT  
+.010  
\$B  
+77.93

BEPD WEPD YEPD MILK  
+3.2 .84 +42 .76 +78 .67 +41 .25

*SAV First Class 0207*



CWT  
+41  
MARB  
+.83  
REA  
+.66  
FAT  
+.020  
\$B  
+93.42

BEPD WEPD YEPD MILK  
+2.0 .96 +65 .93 +107 .91 +14 .26

*Connealy Consensus 7229*



CWT  
+50  
MARB  
+.25  
REA  
+.0  
FAT  
+.076  
\$B  
+57.10

BEPD WEPD YEPD MILK  
+3.4 .98 +55 .97 +98 .97 +23 .96

*SAV 8180 Traveler 004*



CWT  
+39  
MARB  
+.37  
REA  
+.25  
FAT  
+.029  
\$B  
+70.38

BEPD WEPD YEPD MILK  
-.8 .68 +43 .57 +76 .50 +21 .32

*SAV Advancer 7909*



CWT  
+42  
MARB  
-.05  
REA  
+.62  
FAT  
+.0  
\$B  
+63.08

BEPD WEPD YEPD MILK  
+3.4 .60 +65 .47 +119 .45 +26 .20

*SAV 707 Rito 9182*

## Suggested\* Sale Terms and Conditions American Angus Association Effective June 7, 2012

\*These Suggested Sales Terms and Conditions have been drafted for optional use by sellers in multiple types of transactions including auctions, internet auctions, private treaty sales and private treaty sale "bid offs." Whether to use them as drafted, as modified, or not at all, is left to the independent business judgment of every seller. They are for sellers' consideration and voluntary use.

### TERMS OF SALE Announcements

1. If there is any inconsistency in the terms of any sales materials, including sale books, supplement sheets or day-of-sale announcements, (i) the day-of-sale announcement will control over both the supplement sheet and the sale book, and (ii) the supplement sheet will control over the sale book.

### Cash Sale

1. All sales are for cash unless satisfactory credit arrangements, including any possible reservation of security interest by the seller, have been made with the seller prior to sale.

### Buyer's Risk at the Time of Sale

1. The risk of loss and injury of each animal passes to the buyer as soon as it is sold; however, it is the obligation of the seller to ensure that sold animals are fed and cared for free of charge to the buyer until loaded for shipment or until the expiration of 24 hours after the sale, whichever occurs sooner.

### Identification Responsibilities

1. Prior to the sale, the seller must ensure that each animal has a readable permanent identification mark (e.g., tattoo, hot-iron brand or freeze brand) corresponding to its registration.
2. The buyer must check all permanent identification marks for accuracy upon possession and report any discrepancies or irregularities to the seller immediately.
3. In those cases where a nickname is used by the seller, the nickname must also be accompanied by the official registered name and number of the animal.

### Certificates of Registration

1. A transferred certificate of registration must be furnished by the seller free of charge to the buyer for each animal within 45 days following the later of either the date of sale or upon the receipt of full payment.

### Artificial Insemination (AI) Service Certificates

1. AI Service certificates will be the responsibility of the buyer unless otherwise specified by the seller.

### GUARANTEES

#### Health

1. Unless otherwise announced, the seller guarantees that all animals are eligible for interstate shipment as required by applicable federal and state regulations.

#### Conformance with Registration

1. The seller guarantees that all sold animals are registered in accordance with the rules of the American Angus Association.

2. The seller guarantees to the buyer that all sold animals conform to the registration certificate as entered in the Herd Book of the American Angus Association.

#### Pedigree, Performance and Genetic Information

1. The seller guarantees to the buyer that the pedigree, performance data and genetic information, as represented in any sales materials (including any sale book, supplement sheet or day-of-sale announcement), are accurate. The seller shall provide "as of" date for all information from the American Angus Association database.
2. The absence of any such designation on the pedigree of an animal, as set forth in any sales materials, does not establish that the animal in question is not a carrier of any such genetic defect or genetic factor.
3. In those cases where a commonly understood nickname is used by the seller, the seller guarantees the pedigree of the animal based on the commonly understood nickname.

#### Sex

1. Unless otherwise represented by the seller, there are no guarantees that offspring will be of a particular sex.

#### Breeding Guarantees

1. The seller guarantees that all animals are breeders, with the exception of:  
(a) calves under 12 months  
of age at the time of the sale; (b) animals shown after the sale has occurred (in such cases, the breeding guarantees, if any, will be those guarantees as are agreed upon between the seller and the buyer); (c) animals who suffer injury or disease following the sale; and (d) animals subjected to gross negligence by or willful misconduct on the part of the buyer.
2. The seller guarantees that all bulls are breeders for a period of 90 days following the initial turn out with buyer's herd, but only if such bulls are at least 12 months old at the time of sale and have not been allowed to run with the herd until at least 14 months of age. A bull that settles a cow by natural service and passes a fertility test performed by a competent veterinarian or reproductive technician mutually agreed upon by the buyer and the seller will be considered a breeder. Unless otherwise agreed by the buyer and the seller, the seller makes no guarantees with respect to the ability to freeze semen.
3. Cows with calves at their side are presumed to be breeders with no further fertility guarantee.
4. "Safe-in-calf" females are guaranteed by the seller to have been examined by a competent veterinarian or reproductive technician and determined to be safe-in-calf by examination or other proven method (e.g., ultrasound, pregnancy blood tests, and rectal palpation).
5. "Served" females are not guaranteed to be in calf.
6. "Pasture-bred" females have been exposed but are not guaranteed to be in calf.
7. "Open" females are guaranteed by the seller to be without calf.
8. Donor females:
  - a. Unless otherwise agreed by the buyer and the seller, a female that has been used in an embryo transfer program is not guaranteed to be a breeder after the date of the sale.
  - b. Unless otherwise agreed by the buyer and the seller, a female is not guaranteed to be a breeder after the date of the sale, when that female is to be used, or attempted to be used, in an embryo transfer program.
9. The seller makes the following guarantees with respect to all "pregnant recipients": (i) that the female is pregnant, (ii) that the resulting calf is of the pedigree represented, and (iii) that the resulting calf is of the sex represented (if so represented).

#### Semen

1. Unless otherwise agreed by the buyer and the seller, with respect to the sale of semen the seller makes no guarantees with respect to the performance or characteristics of such semen and the buyer is purchasing such semen "as is."

#### Embryos

1. Embryos being offered for sale will be sold "as is" unless the seller provides additional guarantees.

#### Privileges of Return or Adjustment: Options

1. With the exception of any applicable transportation expenses described herein, a seller shall never be liable to a buyer for an amount greater than the original selling price of any animal sold under these Sales Terms and Conditions.
2. Unless otherwise stated, all claims for adjustment or refund must be made in writing to the seller within 180 days following the sale of the animal in question.
3. If an animal is claimed to be a non-breeder, the animal may be returned to the seller if it is in good condition and complies with the health require-

ments of the seller's state. At the option of the buyer, the seller may issue a credit to the buyer for use in a future purchase or provide an animal of equal value subject to the approval of buyer. If the buyer exercises either such option, the claim shall be deemed fully and satisfactorily resolved. However, in the event that the buyer requests a refund of the purchase price, the seller may, at its option, either issue a refund of the full purchase price or, shall have 180 days from the date the animal is returned to the seller's farm to conduct a trial to demonstrate the returned animal is a breeder. Refund of the full purchase price or demonstrated proof that the animal is a breeder during the test trial shall be deemed full satisfaction and settlement of the claim.

Any expense incurred for transporting an animal claimed to be a non-breeder will be the responsibility of the buyer, except that the seller will be responsible for transportation costs in excess of the distance between the buyer's farm and the location where the sale took place. If the seller proves the animal to be a breeder, it will be the obligation of the buyer to take delivery of the animal and pay all transportation expenses.

4. If a female sold as "safe in calf" proves not to be in calf, the seller must make a satisfactory adjustment on the purchase price to the buyer or, at the buyer's option, refund the purchase price upon return of the animal to the farm of the seller. Any claim for adjustment or refund under this paragraph must be made in writing to the seller on or before the first anniversary of the date of the sale.

5. If a female represented as "safe in calf" to a certain bull at the time of sale proves to have been bred to a different bull, the seller must make a satisfactory adjustment on the purchase price to the buyer or, at the buyer's option, refund the purchase price upon return of the animal to the farm of the seller.

Any claim for adjustment or refund under this paragraph must be made in writing to the seller on or before the first anniversary of the date of sale.

6. If a female sold as "open" proves to be with calf, the buyer may return the animal to the farm of the seller prior to calving for a refund of the full purchase price or for another animal of equal value, whichever is acceptable to the buyer. The seller is responsible for all transportation expenses.

7. White skin or hair must not be painted or altered. If such painting or alteration has occurred, the buyer may return the animal to the farm of the seller for a refund of the full purchase price or for another animal of equal value, whichever is acceptable to the buyer.

8. If an animal is sold and subsequently becomes ineligible for registration under the rules of the American Angus Association for reasons other than incorrect parentage, the seller must make a satisfactory adjustment on the purchase price to the buyer or, at the option of the buyer, refund the purchase price upon the return of the animal to the farm of the seller.

9. If an animal (including the offspring of a pregnant recipient) is sold and through parentage verification is proven to have incorrect parentage, as represented by the animal's certificate of registration, and for which correct parentage can be determined, the seller is obligated to make a satisfactory adjustment on the purchase price to the buyer or, at the buyer's option, refund the purchase price upon the return of the animal to the farm of the seller. Any claim for adjustment or refund under this paragraph must be made in writing to the seller on or before the first anniversary of the date of the sale.

10. If the resulting calf of a pregnancy is not of the sex represented at the time of the sale, the seller is obligated to make a satisfactory adjustment on the purchase price to the buyer or, at the buyer's option, refund the purchase price upon the return of the animal to the farm of the seller. Any claim for adjustment or refund under this paragraph must be made in writing to the seller on or before the first anniversary of the date of the sale.

#### Disclosure or Retention of Genetic Materials

1. If seller retains any genetic materials of an animal being sold that can be used for cloning, the seller must disclose such fact to any potential buyers prior to the sale.

#### GENETIC DEFECTS AND FACTORS: REQUIRED DISCLOSURES RELATING TO CERTAIN TEST RESULTS OR POTENTIAL CARRIER STATUS OF AN ANIMAL

1. In advance of any sales of an animal, the seller shall have the affirmative duty to notify any potential buyer of (1) any test results in which an animal for sale has tested positive (under a test and at a laboratory approved by the American Angus Association) as a carrier of any genetic defect or genetic factor recognized by the American Angus Association, and (2) whether the animal has a potential carrier notation on its pedigree for any defect or factor that is recognized by the American Angus Association.

#### Optional Guarantee: Genetic Defects

1. The buyer and seller may determine the scope and duration of a guarantee, if any, on an individual basis. The seller may, but is not required, to provide a guarantee to the buyer relating to genetic defects.
2. Nothing contained herein should be construed to relieve the parties from complying fully with all the rules and policies of the Association relating to genetic defects generally or individually.

#### MISCELLANEOUS

1. The above terms and conditions of sale constitute a contract between the buyer and the seller of each animal and are equally binding upon both parties. Each sale or resale of an animal constitutes a separate transaction. Neither the American Angus Association nor any director, officer, employee or representative of the Association or any of its related entities assumes any liability, legal or otherwise, in connection with any sale or transaction conducted under the terms of the Suggested Sales Terms and Conditions. Nor shall the American Angus Association, its directors, officers, employees or representatives assume any liability or be responsible in any way for enforcing the terms and conditions of any agreement between buyer and seller.
2. Neither the sponsor or sponsors, the sale manager, nor any other person connected with the management of the sale, assumes any liability, legal or otherwise.
3. These sale terms and conditions and all rights, obligations and duties arising hereunder and all disputes arising hereunder will be construed in accordance with, and governed by, the laws of the state in which the sale of the animal or animals occurs, without giving effect to such state's choice of law rules.

UNLESS OTHERWISE EXPRESSLY STATED IN THESE SALE TERMS AND CONDITIONS OR ANY OTHER WRITTEN AGREEMENT BETWEEN THE PARTIES RELATING TO THE SALE OF ANGUS CATTLE UNDER THESE SALE TERMS AND CONDITIONS, SELLER MAKES NO OTHER WARRANTIES, EXPRESS OR IMPLIED, INCLUDING ANY IMPLIED WARRANTY OF MERCHANTABILITY OR FITNESS FOR A PARTICULAR PURPOSE, EVEN IF SUCH PURPOSE IS KNOWN TO THE PARTIES. THE REMEDIES PROVIDED IN THESE SALE TERMS AND CONDITIONS ARE THE EXCLUSIVE REMEDIES OF THE BUYER, OR ANY PARTY CLAIMING THROUGH THE BUYER, AND UNDER NO CIRCUMSTANCES WILL THE SELLER BE LIABLE FOR ANY INCIDENTAL, INDIRECT, SPECIAL, CONSEQUENTIAL, PUNITIVE OR EXEMPLARY DAMAGES UNDER ANY INDEMNITY PROVISION OR OTHERWISE.

# American Angus Association Selection Tools

Expected Progeny Difference (EPD), is the prediction of how future progeny of each animal are expected to perform relative to the progeny of other animals listed in the database. EPDs are expressed in units of measure for the trait, plus or minus. Interim EPDs may appear on young animals when their performance has yet to be incorporated into the American Angus Association National Cattle Evaluation (NCE) procedures. This EPD will be preceded by an "I", and may or may not include the animal's own performance record for a particular trait, depending on its availability, appropriate contemporary grouping, or data edits needed for NCE.

## GROWTH

**Calving Ease Direct (CED)**, is expressed as a difference in percentage of unassisted births, with a higher value indicating greater calving ease in first-calf heifers. It predicts the average difference in ease with which a sire's calves will be born when he is bred to first-calf heifers.

**Birth Weight EPD (BW)**, expressed in pounds, is a predictor of a sire's ability to transmit birth weight to his progeny compared to that of other sires.

**Weaning Weight EPD (WW)**, expressed in pounds, is a predictor of a sire's ability to transmit weaning growth to his progeny compared to that of other sires.

**Yearling Weight EPD (YW)**, expressed in pounds, is a predictor of a sire's ability to transmit yearling growth to his progeny compared to that of other sires.

**Scrotal Circumference EPD (SC)**, expressed in centimeters, is a predictor of the difference in transmitting ability for scrotal size compared to that of other sires.

## MATERNAL

**Calving Ease Maternal (CEM)**, is expressed as a difference in percentage of unassisted births with a higher value indicating greater calving ease in first-calf daughters. It predicts the average ease with which a sire's daughters will calve as first-calf heifers when compared to daughters of other sires.

**Maternal Milk EPD (Milk)**, is a predictor of a sire's genetic merit for milk and mothering ability as expressed in his daughters compared to daughters of other sires. In other words, it is that part of a calf's weaning weight attributed to milk and mothering ability.

**Cow Energy Value (\$EN)**, expressed in dollars savings per cow per year, assesses differences in cow energy requirements as an expected dollar savings difference in daughters of sires. A larger value is more favorable when comparing two animals (more dollars saved on feed energy expenses). Components for computing the cow \$EN savings difference include lactation energy requirements and energy costs associated with differences in mature cow size.

## CARCASS

**Carcass Weight EPD (CW)**, expressed in pounds is a predictor of the differences in hot carcass weight of a sire's progeny compared to progeny of other sires.

**Marbling EPD (Marb)**, expressed as a fraction of the difference in USDA marbling score of a sire's progeny compared to progeny of other sires.

**Ribeye Area EPD (RE)**, expressed in square inches, is a predictor of the difference in ribeye area of a sire's progeny compared to progeny of other sires.

**Fat Thickness EPD (Fat)**, expressed in inches, is a predictor of the differences in external fat thickness at the 12th rib (as measured between the 12th and 13th ribs) of a sire's progeny compared to progeny of other sires.

## \$VALUE INDEXES

\$Value indexes are multi-trait selection indexes, expressed in dollars per head, to assist beef producers by adding simplicity to genetic selection decisions. The \$Value is an estimate of how future progeny of each sire are expected to perform, on average, compared to progeny of other sires in the database if the sires were randomly mated to cows and if calves were exposed to the same environment.

**Weaned Calf Value (\$W)**, an index value expressed in dollars per head, is the expected average difference in future progeny performance for pre-weaning merit. \$W includes both revenue and cost adjustments associated with differences in birth weight, weaning direct growth, maternal milk, and mature cow size.

**Feedlot Value (\$F)**, an index value expressed in dollars per head, is the expected average difference in future progeny performance for post-weaning merit compared to progeny of other sires.

**Grid Value (\$G)**, an index value expressed in dollars per head, is the expected average difference in future progeny performance for carcass grid merit compared to progeny of other sires.

**Beef Value (\$B)**, an index value expressed in dollars per head, is the expected average difference in future progeny performance for post-weaning and carcass value compared to progeny of other sires.





*Back from a ride through the bottom road.*



*Penny and Paisley*



*Checking out the new silage with Papa.*

## *Testimonials of Satisfied Customers*

*"I'm very satisfied with everything I've ever bought from Tanner Farms. We've purchased Angus pairs, bred heifers, bred cows, commercial bred heifers, and six Angus bulls. The bulls have really held up well during the breeding season. We're having real good calves and they are bringing good money. Due to the quality of the heifer calves, we're keeping all of them to increase our herd."*

*"We haven't had a bad calf since I've been using Tanner bulls. I will continue to be a Tanner customer. If someone is looking for a bull, they need to try a Tanner bull. They surely won't be disappointed."*

Dana Holifield  
Laurel, MS

After using several different breeds and not being satisfied with uniformity, Paul says...

*"Over the last two years, we've purchased 24 bulls from the Tanners. The bulls are a good size and they fit in well with our cows. They hold up a lot better than the bulls we have bought around here, plus we have not had to cull any of the bulls. Our pregnancy rate is the best we've had in several years and it is steadily climbing. The calves look really good and have done a lot better since we have been using the Tanner bulls. We are looking forward to their next sale so we can add some more to our herd."*

Paul Price, Beef Manager  
Cummins Farm  
Arkansas Department of Correction



Sale Managers  
TOM BURKE, KURT SCHAFF, JEREMY HAAG

AMERICAN ANGUS HALL OF FAME  
at the WORLD ANGUS HEADQUARTERS  
Box 660, Smithville, MO 64089-0660.  
Phone: (816) 532-0811  
Fax: (816) 532-0851  
E-mail [angushall@earthlink.net](mailto:angushall@earthlink.net)  
[www.angushall.com](http://www.angushall.com)

**PRSR**  
**FIRST CLASS**  
U.S. POSTAGE  
**PAID**  
Minster, OH  
Permit #1

**FIRST CLASS MAIL TIME SENSITIVE REQUESTED IN-HOME DATE OF SEPTEMBER 27, 2013**

# Tanner Farms

Located 45 min. North of Meridian on Hwy. 45



\*From North on Hwy 45 - Go 9.8 miles from 4-way stop at Macon.

Turn left onto Field Road. Continue 1 mile - Sale Barn on left.

\* From South on Hwy 45 - Go 10.5 miles from 4-way stop at Scooba.

Turn right onto Field Road. Continue 1 mile - Sale Barn on left.