

A person wearing a cowboy hat and a vest is riding a brown horse in a field. The field is enclosed by a wooden fence. In the background, there are many green trees under a clear blue sky.

Tanner
Farms

Angus & SimAngus

PASTURE PERFORMANCE-TESTED BULL SALE

Saturday, October 25, 2014

12 Noon ~ Shuqualak, Mississippi

Log on to www.TannerFarms.net for
more information and videos of bulls selling!

"Southeast's Largest Angus Seedstock Producer"



Erin & Drew Tanner, Gary & Lorrie Tanner,
Eric & Amanda Roberts



Paisley and Penny Tanner



Sophia, Amelia, and Andrew Roberts



Janie & Harvey Koehne



The Tim Hardy Family



Becky Melton



Dear Friends,

We want to invite you and your family to join us on Saturday, October 25, 2014, for our annual **Tanner Farms Pasture Performance-Tested Bull Sale**. We have a great set of 200, 2-year old and Coming 2-year old Angus and SimAngus bulls. They are soundness tested, Trich tested, guaranteed fertile, and part of our certified herd. All sell with a 100% guarantee.

Because these bulls are born and raised on our Mississippi farm they are accustomed to the heat and humidity of our Southern environment. Our bulls are raised on a forage-based ration and performance tested to measure performance and growth. Non-performers are culled so we only offer you bulls that will have a strong positive impact on both your operation and your bottom line. You can release these bulls into your herd with confidence because they are soundness tested at 13 months and again just prior to the sale.

We are happy to offer personalized service to our customers and will help you select a bull that will meet your specific needs. Whether you are looking for a calving ease bull for heifers or a bull for your mature cow herd we should have a bull to fit your criteria. **We also offer free delivery with the purchase of three or more bulls.** Call or come by the farm and we will be glad to assist you.

We want to especially say "Thank you" to our past customers! We appreciate the opportunity to serve you and thank you for the confidence you've placed in our program! The calves you produce and your recommendation to your family and friends are our best form of advertising!

Our entire family invites you to join us on sale day for good food, fellowship, and warm Southern hospitality. Plan to be with us for a country breakfast at 8:00 am and look over the cattle. Lunch will be served at 10:45.

Hope to see you there!

Gary & Lorie Tanner

Checkout www.tannerfarms.net
FOR VIDEO



*Tanner
Farms*

Gary Tanner (cell)601-319-6610
Harvey Koehne (cell)601-319-6640
Tim Hardy (cell)601-319-7894
Office 601-477-2202



PASTURE PERFORMANCE-TESTED ANGUS BULL SALE

Noon • Saturday • October 25, 2014

At Tanner Farms, Shuqualak, Mississippi

SALE DAY PHONES:

Sale Barn: (662) 793-0073, (662) 793-0074
Gary Tanner, Cell (601) 319-6610
Harvey Koehne (601) 319-6640
Tim Hardy (601) 319-7894
Kurt Schaff (816) 520-6447

AUCTIONEER:

Jarvene Shackelford (662) 837-4904

SALE CONSULTANT:

Mark Duffell (703) 930-1841

SALE MANAGER:

American Angus Hall of Fame - (816) 532-0811
Tom Burke Kurt Schaff Jeremy Haag
(816) 853-2697 (816) 520-6447 (816) 516-1309
Buyers unable to attend the sale may send their bids to the Sale Manager, Regional Manager, Field Representatives or Auctioneer.

LIVESTOCK PUBLICATION REPRESENTATIVES:

David Gazda, *Angus Journal*
Bruce Bradley, Special Assignment
Derron Helderman, Special Assignment
Jimmy Fetner, Special Assignment
LeAnne Peters, Mississippi Catlemen's Association

TERMS AND CONDITIONS:

Cattle will sell under the suggested Terms and Conditions of the American Angus Association (http://www.angus.org/Pub/suggested_sale_terms.pdf).

SUPPLEMENTAL INFORMATION:

A supplemental sheet will be available sale day with complete and up-to-date information. Announcements from the auction block take precedence over sale book information. All lots are AM, NH, CA, M1, D2 and DD free unless otherwise indicated.

HERD HEALTH:

All cattle will be accompanied by proper health certificates for immediate shipment.

TRUCKING:

Truckers believed to be reliable will be available to assist you in shipping your purchases.

GUARANTEE:

We guarantee our bulls to be reproductively sound. We do not guarantee against injury or sickness.

LIVESTOCK MORTALITY INSURANCE:

To properly insure your investment, Mike Dobbins with American Livestock Insurance, will be available to assist you with mortality insurance. (601) 606-4712

FOOD AND REFRESHMENTS:

A full country breakfast will be served beginning at 8:00 a.m., with lunch beginning at 10:45 a.m.

Sale book prepared by the Sale Managers, TOM BURKE, KURT SCHAFF, JEREMY HAAG, AMERICAN ANGUS HALL OF FAME, At the WORLD ANGUS HEADQUARTERS, PO Box 660, Smithville, MO 64089-0660. Phone: (816) 532-0811. Fax: (816) 532-0851. E-Mail: angushall@earthlink.net - www.angushall.com

COMMENTS FROM THE SALE MANAGER:

The Southeast's Largest Seedstock Source!

It is a genuine pleasure and privilege to work with Gary and Lorrie Tanner, their family and crew, in the presentation of the Tanner Farms Pasture Performance-Tested Angus Bull Sale, set for Saturday, October 25, 2014. An outstanding set of strong-age bulls will sell. These bulls are backed by industry-leading AI sires and many are from some of the recognized cow families of the breed. The depth and dimension of this sale offering is impressive. These bulls will be lean and ready to go to work. Plan now to be on hand for this exciting event. Everyone at Tanner Farms looks forward to having you as their guest for this special event.

Please feel free to call on them or on any of us at the American Angus Hall of Fame, if we can be of assistance in any way.

Sincerely,



TOM BURKE
(816) 853-2697



KURT SCHAFF
(816) 520-6447



JEREMY HAAG
(816) 516-1309

Tom Burke
Tom Burke

Kurt Schaff
Kurt Schaff

Jeremy Haag
Jeremy Haag

DIRECTIONS TO THE SALE SITE:

Directions to Farm from Meridian:

Driving north on Interstate 59, exit right at Exit 157B - Macon and Hwy. 45 North.

Continue on 45 North for 31 miles until you reach the 4-way stop at Scooba. Continue through the 4-way stop and in 9 miles turn right onto Field Road. Tanner Farms Sale Barn is located 1 mile on the left.

Directions to Farm from Columbus:

Take US 82 E to US 45 S toward Macon. Drive south on US 45 S for approximately 30 miles until you reach the 4-way stop at Macon. Continue through the 4-way stop on 45 South for 12 miles. You will see signs for the town of Shuqualak. Continue on US 45 South for 1/4 mile. Turn left and cross over. Tanner Farms Sale Barn is located 1 mile on the left on Field Road.



Gary and Lorrie Tanner

ACCOMMODATIONS:

Oak Tree Inn

Located 10 minutes north of Farm.
12710 Hwy. 45 and Hwy. 14 Bypass
Macon, MS 39341
(662) 726-4334

Drury Inn & Suites

Located 45 minutes south of Farm
1121 Hwy. 11 and 80
Meridian, MS 39301
(601) 483-5570

Hampton Inn

Located 45 minutes south of Farm
103 US Hwy. 11 and 80
Meridian, MS 39302
(601) 483-3000

Wyngate by Wyndham

Located 45 minutes north of Farm
120 Brickerton Street
Columbus, MS 39701
(662) 327-9999

AIRPORT INFORMATION:

Meridian Regional Airport

Located 45 minutes south of Farm
2811 Airport Blvd. South
Meridian, MS 39307
(601) 482-0364
Rental Car Service Available

Golden Triangle Regional Airport

Located 45 minutes north of Farm
2080 Airport Road
Columbus, MS 39701
(662) 327-4422
Rental Car Service Available

Jackson-Evers

International Airport

Located 2.5 hours west of Farm
100 International Drive #300
Jackson, MS 39208
(601) 939-5631
Rental Car Service Available

Macon Municipal VFR Airport

Located 10 minutes north of Farm
Contact John Peters or Pam Norris for
landing authorization (662) 361-1469
105 W. Pulaski Street
Macon, MS 39341
(662) 726-5847
There is no rental service available. Call prior
to sale day and arrangements will be made
with the farm for someone to pick you up.

Purchasing and restoring a farm dating back to 1845, we began to expand our registered Angus program. Much work had to be done to bring this once-thriving farm back to life. For almost thirty years, the farm and plantation home had lain fallow and unoccupied. Fields were reclaimed, fences and ponds built and repaired, and grasses and corn were planted where long ago cotton had once been king. The lush green hills today bear witness to God's redemptive hand on this land just as He works in the lives of people. The Lord blessed us in this undertaking; may He be honored and glorified in all we do!

Psalm 34: 1-10

****If you need further assistance with any travel arrangements contact Tanner Farms****

**Plan to also attend the Tanner Farms Angus Bull Sale,
January 10, 2015, Wiggins, Mississippi.**

TANNER ANGUS BULLS



TANNER FINAL ANSWER 2838 - Lot 1

TANNER FINAL ANSWER 964Y - Full brother to Lots 1, 2 and 3.



1 Tanner Final Answer 2838

Calved: 11/20/2012

Bull 17563143

Tattoo: 2838

Sitz Traveler 8180
SAV Final Answer 0035
#13592905 SAV Emulous 8145

GDAR Traveler 71
Sitz Everelda Entense 1137
Bon View Bando 598
SAV Sky Emulous 2124
Bon View Bando 598
SAF Royal Lass 1002
Prodigy 5001 of BCAR
KEM 847 of Woodlawn

CWT
+29
MARB
+.56
REA
+.32
FAT
+.031

SAF 598 Bando 5175
Kem 322 of Woodlawn
14120917 KEM 119 of Woodlawn

★ The first of three full brothers to Tanner Final Answer 964Y, the top-selling bull of the 2011 Tanner Fall Sale to Foster Angus of Arkansas.

★ This outstanding prospect by the Pathfinder Sire, SAV Final Answer 0035, has individual IMF and ribeye ratios of 109 and 102, respectively, from a proven donor dam who combines a progeny birth ratio of 98 with a progeny weaning ratio of 108 on six natural calves and a progeny yearling ratio of 106 on four head along with a progeny IMF ratio of 104 on 20 head.

★ Recommended for Heifers



KEM 119 OF WOODLAWN - The grandam of Lots 1 through 5.

2 Tanner Final Answer 2828

Calved: 11/19/2012

Bull 17563134

Tattoo: 2828

Sitz Traveler 8180
SAV Final Answer 0035
#13592905 SAV Emulous 8145

GDAR Traveler 71
Sitz Everelda Entense 1137
Bon View Bando 598
SAV Sky Emulous 2124
Bon View Bando 598
SAF Royal Lass 1002
Prodigy 5001 of BCAR
KEM 847 of Woodlawn

CWT
+26
MARB
+1.52
REA
+1.35
FAT
+1.036

SAF 598 Bando 5175
Kem 322 of Woodlawn
14120917 KEM 119 of Woodlawn

★ A full brother to Tanner Final Answer 964Y, the top-selling bull of the 2011 Tanner Fall Sale to Foster Angus of Arkansas.

★ This bull combines the proven genetics of the Pathfinder Sires, SAV Final Answer 0035 and SAF 598 Bando 5175, from a donor dam who is a second-generation Tanner donor, descending from the legendary Kem 119 of Woodlawn.

★ Recommended for Heifers



KEM 322 OF WOODLAWN - The dam of Lots 1, 2 and 3.

3

Tanner Final Answer 2847

Calved: 11/24/2012

Bull 17563146

Tattoo: 2847

SAV Final Answer 0035 #13592905	SAV Emulous 8145	Sitz Traveler 8180	GDAR Traveler 71	CWT
		Sitz Everelda Entense 1137	Bon View Bando 598	+31
		SAV Sky Emulous 2124	Bon View Bando 598	MARB
		SAF 598 Bando 5175	SAF Royal Lass 1002	+54
Kem 322 of Woodlawn 14120917	KEM 119 of Woodlawn	Prodigy 5001 of BCAR	KEM 847 of Woodlawn	REA
				+44
				FAT
				+045

★ This high-performing flush brother to Lots 1 and 2 is also a full brother to the top-selling bull of the 2011 Tanner Fall Sale.

★ This bull combines an individual birth ratio of 99 with individual weaning and yearling ratios of 112 and 113, respectively, and individual IMF and ribeye ratios of 107 and 115, respectively, from a top-producing dam.

★ Recommended for Heifers

4

Tanner Final Answer 3316

Calved: 03/05/2013

Bull 17623914

Tattoo: 3316

SAV Final Answer 0035 #13592905	SAV Emulous 8145	Sitz Traveler 8180	GDAR Traveler 71	CWT
		Sitz Everelda Entense 1137	Bon View Bando 598	+16
		SAV Sky Emulous 2124	Bon View Bando 598	MARB
		GAR Retail Product	GAR Precision 1680	+24
7-L Kem 7012 +15745925	KEM 119 of Woodlawn	GAR Ext 4927	Prodigy 5001 of BCAR	REA
		KEM 847 of Woodlawn		+45
				FAT
				+044

★ The first of two flush brothers by the Pathfinder Sire, SAV Final Answer 0035, stemming from the legendary Kem 119 of Woodlawn.

★ This bull is a three-quarter brother to Lots 1, 2 and 3.

★ Recommended for Heifers

5

Tanner Final Answer 3381

Calved: 02/27/2013

Bull 17623916

Tattoo: 3381

SAV Final Answer 0035 #13592905	SAV Emulous 8145	Sitz Traveler 8180	GDAR Traveler 71	CWT
		Sitz Everelda Entense 1137	Bon View Bando 598	+13
		SAV Sky Emulous 2124	Bon View Bando 598	MARB
		GAR Retail Product	GAR Ext 4927	+25
7-L Kem 7012 +15745925	KEM 119 of Woodlawn	Prodigy 5001 of BCAR	KEM 847 of Woodlawn	REA
				+45
				FAT
				+036

★ This flush brother to the previous bull is from a mating by the Pathfinder Sire, SAV Final Answer 0035, from a tremendous donor dam selected from the Monarch Dispersal, stemming from the legendary Kem 119 of Woodlawn.

★ A maternal sister has a progeny weaning ratio of 103 on her first calf.

★ Recommended for Heifers



7-L KEM 7012 - The dam of Lots 4 and 5.



TANNER FINAL ANSWER 2847 - Lot 3

6

Tanner Final Answer 3134

Calved: 01/14/2013

Bull 17578658

Tattoo: 3134

SAV Final Answer 0035 #13592905	SAV Emulous 8145	Sitz Traveler 8180	GDAR Traveler 71	CWT
		Sitz Everelda Entense 1137	Bon View Bando 598	+14
		SAV Sky Emulous 2124	Bon View Bando 598	MARB
		SAV Bismarck 5682	GAR Grid Maker	+59
Tanner Power Fix It A311 +17095507	Tanner Miss Power Fix X266	SAV Abigale 0451	SAF 598 Bando 5175	REA
		CA Miss Power Fix 308		+64
				FAT
				+014

★ A blending of the proven Pathfinder Sires, SAV Final Answer 0035 and SAV Bismarck 5682, who have both led the breed for annual registrations.

★ This bull has an individual weaning ratio of 102 and an individual ribeye ratio of 105, from a dam with a progeny weaning ratio of 108 on two calves, from the cow family that produced CA Future Direction 5321.

★ Recommended for Heifers

7

Tanner Final Answer 320

Calved: 02/13/2013

Bull 17577650

Tattoo: 320

SAV Final Answer 0035 #13592905	SAV Emulous 8145	Sitz Traveler 8180	GDAR Traveler 71	CWT
		Sitz Everelda Entense 1137	Bon View Bando 598	+25
		SAV Sky Emulous 2124	Bon View Bando 598	MARB
		Connealy Lead On	Connealy Leadtime	+62
Boyd Altune 7304 +15990241	Altune of Conanga 6104	Eligence Plus of Conanga	GAR Traveler 1489	REA
		Avalon 1418 of Conanga 6276		+51
				FAT
				+006

★ The result of mating SAV Final Answer 0035 with a full sister to Connealy Onward.

★ This bull has an individual IMF ratio of 122 and an individual ribeye ratio of 102, and his dam combines a progeny birth ratio of 94 with a progeny weaning ratio of 108 on two natural calves and a progeny yearling ratio of 106 on one head.

★ Recommended for Heifers



BOYD ALTUNE 7304 - The dam of Lot 7.

TANNER ANGUS BULLS



SAV FINAL ANSWER 0035 - Featuring his sons.

10 Tanner Final Answer 2742

Calved: 10/24/2012

Bull 17534303

Tattoo: 2742

Sitz Traveler 8180	GDAR Traveler 71	CWT
SAV Final Answer 0035	Sitz Everelda Entense 1137	+21
#13592905 SAV Emulous 8145	Bon View Bando 598	MARB
	SAV Sky Emulous 2124	+41
		REA
Whitestone Final Product	B/R New Dimension 7127	+61
Koupal Georgina 672	EF Rita 0203	FAT
15455116 Koupals Scotchman 0195	E&b 1483 Scotchman 543	+049
	Beefland Georgina K351	\$B

- ★ A calving-ease herd sire prospect by the record-setting Genex/CRI sire, SAV Final Answer 0035.
- ★ This bull has an individual ribeye ratio of 113, from a dam who combines a progeny ribeye ratio of 109 on four calves with a progeny birth ratio of 99 balanced with progeny weaning and yearling ratios of 101 and 105, respectively, on four head.
- ★ Recommended for Heifers

11 Tanner Final Answer 3162 [DDF]

Calved: 01/28/2013

Bull 17599266

Tattoo: 3162

Sitz Traveler 8180	GDAR Traveler 71	CWT
SAV Final Answer 0035	Sitz Everelda Entense 1137	+12
#13592905 SAV Emulous 8145	Bon View Bando 598	MARB
	SAV Sky Emulous 2124	+43
		REA
Stevenson Moneymaker R185	Boyd On Target 1083	+55
Sandpoint Lucy 8183	Stevenson Clova Pride L888	FAT
16083229 BT Lucy 97P	BCC Bushwacker 41-93	+062
	BT Lucy 350M	\$B

- ★ This calving-ease herd sire prospect by the Pathfinder Sire, SAV Final Answer 0035, has individual IMF and ribeye ratios of 104 and 106, respectively.
- ★ The dam of this bull records a progeny weaning ratio of 100 on four calves along with progeny IMF and ribeye ratios of 101 and 104, respectively, on three head.
- ★ Recommended for Heifers

12 Tanner Final Answer 3275

Calved: 02/22/2013

Bull 17616569

Tattoo: 3275

Sitz Traveler 8180	GDAR Traveler 71	CWT
SAV Final Answer 0035	Sitz Everelda Entense 1137	+20
#13592905 SAV Emulous 8145	Bon View Bando 598	MARB
	SAV Sky Emulous 2124	+29
		REA
Limestone EXT S666	N Bar Emulation EXT	+43
Buford Pride 9135	WK Blackbird 9045	FAT
#16538466 J Bar 7 Pride 6150	Sitz Emulation Ext 5663	+050
	J Bar 7 Pride 218	\$B

- ★ A high-performance son of SAV Final Answer 0035 with an individual birth ratio of 98 combined with individual weaning and yearling ratios of 113 and 106, respectively, along with an individual ribeye ratio of 116.
- ★ The Pathfinder Dam of this bull has a progeny birth ratio of 99 combined with a progeny weaning ratio of 109 on four calves and a progeny yearling ratio of 103 on three head.
- ★ Recommended for Heifers

13 Tanner Pioneer 2739

Calved: 10/23/2012

Bull 17610071

Tattoo: 2739

SAV Final Answer 0035	Sitz Traveler 8180	CWT
SAV Pioneer 7301	SAV Emulous 8145	+27
15688392 SAV Blackbird 5297	Boyd New Day 8005	MARB
	SAV Blackbird 1082	+29
		REA
B/R New Frontier 095	B/R New Design 036	+77
Whitestone Madame V177	White Fence Pride H1	FAT
15622906 Whitestone Madame T212	Whitestone Survivor N088	-001
	SAR New Day Madame 2570	\$B

- ★ Backed by generations of proven genetics, this moderate birth, large ribeye bull is by the proven Genex/CRI sire, SAV Pioneer 7301.
- ★ This bull is from a proven family from a dam by B/R New Frontier 095.
- ★ Recommended for Heifers

8 Tanner Final Answer 3219 [DDF]

Calved: 02/05/2013

Bull 17578649

Tattoo: 3219

Sitz Traveler 8180	GDAR Traveler 71	CWT
SAV Final Answer 0035	Sitz Everelda Entense 1137	+14
#13592905 SAV Emulous 8145	Bon View Bando 598	MARB
	SAV Sky Emulous 2124	+56
		REA
SAV Bismarck 5682	GAR Grid Maker	+60
Tanner Susie A170	SAV Abigale 0451	FAT
17031519 Tanner Susie 713	SAV 8180 Traveler 004	+042
	Mindemann Susie 232	\$B

- ★ This calving-ease herd sire prospect is a blending of the proven Pathfinder Sires, SAV Final Answer 0035, SAV Bismarck 5682 and SAV 8180 Traveler 004.
- ★ This bull is from the family that produced the Pathfinder Sire, Gardens Prime Time.
- ★ Recommended for Heifers

9 Tanner Final Answer 3168

Calved: 01/29/2013

Bull 17616574

Tattoo: 3168

Sitz Traveler 8180	GDAR Traveler 71	CWT
SAV Final Answer 0035	Sitz Everelda Entense 1137	+10
#13592905 SAV Emulous 8145	Bon View Bando 598	MARB
	SAV Sky Emulous 2124	+32
		REA
SAV Front Runner 0713	Connealy Frontline	+39
Tanner Pride T613	Jacs Blossom 5357	FAT
15392481 Martin Pride G40	Gdar SVF Russ 184B	+008
	TC Pride 2007	\$B

- ★ This son of the Pathfinder Sire, SAV Final Answer 0035, combines an individual birth ratio of 96 with an individual weaning ratio of 108 and an individual ribeye ratio of 113.
- ★ This bull is from the family that produced the Pathfinder Sire, TC Stockman 365.
- ★ Recommended for Heifers



SAV BLACKBIRD BLOSSOM 8008 - This featured Tanner donor is a paternal sister to Lots 1 through 12.

14

Tanner Pioneer 2913

Calved: 12/10/2012

Bull 17616641

Tattoo: 2913

SAV Pioneer 7301
15688392 SAV Blackbird 5297

Dr J Analyst M250

Tanner Pride 811Y

16654956 Southern Pride 5041

Sitz Traveler 8180
SAV Emulous 8145
Boyd New Day 8005
SAV Blackbird 1082

BCC Bushwacker 41-93
GAR Precision 706
WCC Special Design L309
White Fence Pride H1

CWT
+31
MARB
+46
REA
+75
FAT
+066
\$B

- ★ This high-performance

son of SAV Pioneer 7301 records individual weaning and yearling ratios of 117 and 116, respectively, along with individual IMF and ribeye ratios of 110 and 107, respectively.

- ★ The dam records progeny weaning and yearling ratios of 110 combined with a progeny IMF ratio of 110 on two calves.

BEPD	WEPD	YEPP	MILK	BW	\$B
+2.4	.37	+65	.28	+112	.28
+29	.22	79	+77.83		

15

Tanner Pioneer 2810

Calved: 11/07/2012

Bull 17562822

Tattoo: 2810

SAV Pioneer 7301
15688392 SAV Blackbird 5297

Koupals B&B Stinger 301

B&B Gammer 5063

15111563 B&B Gammer 3047

Sitz Traveler 8180
SAV Emulous 8145
Boyd New Day 8005
SAV Blackbird 1082

Whitestone Precision H141
Whitestone Everelda Entense
Hylene Right Time 338
Bon View Gammer 1034

CWT
+26
MARB
+26
REA
+63
FAT
+017
\$B

- ★ A blending of the herd sire

producing Gammer and Blackbird families by the proven sire, SAV Pioneer 7301.

- ★ The dam has a progeny ribeye ratio of 106 on four head and the third dam is a Pathfinder Dam.

- ★ Recommended for Heifers

BEPD	WEPD	YEPP	MILK	BW	\$B
+1.4	.36	+46	.28	+84	.28
+24	.22	77	+66.62		

16

Tanner Pioneer 3254

Calved: 02/18/2013

Bull 17624058

Tattoo: 3254

SAV Pioneer 7301
15688392 SAV Blackbird 5297

GAR Precision 1680

Whitestone Blackcap U235

+15029227 GAR Ext 2114

Sitz Traveler 8180
SAV Emulous 8145
Boyd New Day 8005
SAV Blackbird 1082

Tehama Bando 155
9J9 GAR 856
N Bar Emulation EXT
GAR Scotch Cap 867

CWT
+27
MARB
+48
REA
+78
FAT
+031
\$B

- ★ The first of two flush brothers by

the proven total performance sire, SAV Pioneer 7301.

- ★ The donor dam has a progeny birth ratio of 95 combined with a progeny weaning ratio of 101 on five natural calves and a progeny yearling ratio of 105 on four head along with progeny IMF and ribeye ratios of 110 and 105, respectively, on 11 head, and she is a full sister to one of the breeds top income-producing cows.

- ★ Recommended for Heifers

BEPD	WEPD	YEPP	MILK	BW	\$B
+1.6	.38	+48	.30	+88	.30
+26	.24	73	+77.24		

17

Tanner Pioneer 3298

Calved: 02/28/2013

Bull 17624059

Tattoo: 3298

SAV Pioneer 7301
15688392 SAV Blackbird 5297

GAR Precision 1680

Whitestone Blackcap U235

+15029227 GAR Ext 2114

Sitz Traveler 8180
SAV Emulous 8145
Boyd New Day 8005
SAV Blackbird 1082

Tehama Bando 155
9J9 GAR 856
N Bar Emulation EXT
GAR Scotch Cap 867

CWT
+33
MARB
+48
REA
+82
FAT
+035
\$B

- ★ This flush brother to the

previous bull has an individual yearling ratio of 110 along with an individual ribeye ratio of 112.

- ★ The top-indexing donor dam of this bull stems from the high income-producing cow, GAR EXT 2114.

BEPD	WEPD	YEPP	MILK	BW	\$B
+3.1	.38	+45	.30	+97	.30
+26	.24	83	+83.65		



SAV PIONEER 7301 - Featuring his sons.

18

Tanner Expedition 3206

Calved: 02/01/2013

Bull 17578647

Tattoo: 3206

SAV Expedition 1037
17016444 SAV Emblynette 9020

SAV Bismarck 5682

Tanner Blackcap A109

16985127 Whitestone Blackcap T014

Sitz Traveler 8180
SAV Emulous 8145
Waimata E230
SAV Emblynette 6660

GAR Grid Maker
SAV Abigale 0451
SAV 8180 Traveler 004
Blackcap P173 of Whitestone

CWT
+31
MARB
+40
REA
+48
FAT
+036
\$B

- ★ This high-performance

son of the Tanner featured sire, SAV Expedition 1037, has impressive individual weaning and yearling ratios of 110 and 118, respectively, along with an individual ribeye ratio of 110, as his dam's first calf.

- ★ The dam is backed by the successful blending of the Pathfinder Sires, SAV Bismarck 5682 and SAV 8180 Traveler 004.

BEPD	WEPD	YEPP	MILK	BW	\$B
+2.6	.33	+65	.22	+117	.22
+28	.11	72	+76.85		

19

Tanner Expedition 3147

Calved: 01/23/2013

Bull 17578643

Tattoo: 3147

SAV Expedition 1037
17016444 SAV Emblynette 9020

SAV Bismarck 5682

Tanner Lass A211

17031513 Tanner Lass 9033

Sitz Traveler 8180
SAV Emulous 8145
Waimata E230
SAV Emblynette 6660

GAR Grid Maker
SAV Abigale 0451
Koupals B&B Discovery 503
B&B Lass 9034

CWT
+17
MARB
+38
REA
+30
FAT
+014
\$B

- ★ A calving-ease herd sire

prospect with an individual birth ratio of 91 combined with an individual weaning ratio of 101, by SAV Expedition 1037.

- ★ This bull is a grandson of the Pathfinder Sires, SAV Final Answer 0035 and SAV Bismarck 5682.

- ★ Recommended for Heifers

BEPD	WEPD	YEPP	MILK	BW	\$B
+6	.33	+60	.22	+96	.22
+22	.12	61	+58.92		



SAV BLACKBIRD 5297 - The dam of SAV Pioneer 7301 whose sons sell.

TANNER ANGUS BULLS



TANNER THUNDERBIRD 2854 - Lot 22

22 Tanner Thunderbird 2854

Calved: 11/20/2012 Bull 17544802 Tattoo: 2854

SAV Final Answer 0035	Sitz Traveler 8180	CWT
SAV Thunderbird 9061	SAV Emulous 8145	+45
16396499 SAV Emblynette 7411	SAV Bismarck 5682	MARB
	SAV Emblynette 4408	+62
	Sitz Upward 307R	REA
LHF Blackcap 026	Connealy Onward	+23
16663996 Newman Blackcap S459	Sitz Henrietta Pride 81M	FAT
	SAV 8180 Traveler 004	+037
	Newman Blackcap N452	\$B

- ★ A son of the popular Accelerated Genetics sire, SAV Thunderbird 9061.
- ★ The dam of this bull is backed by the proven genetics of the Genex/CRI Pathfinder Sires, Sitz Upward 307R and SAV 8180 Traveler 004.

23 Tanner Bismarck 3268

Calved: 02/19/2013 Bull 17623978 Tattoo: 3268

GAR Grid Maker	GDAR Traveler 044	CWT
SAV Bismarck 5682	GAR Precision 2536	+10
#+15109865 SAV Abigale 0451	Schoenes Fix It 826	MARB
	SAV Abigale 6062	+64
	Bon View New Design 208	REA
Three Trees Evergreen R0361	B/R New Design 036	+49
+15022711 Brost Miss Traveler 703	Bon View Erica 443	FAT
	N Bar Emulation EXT	-014
	GT Miss Traveler 177	\$B

- ★ The first of three flush brothers by the Pathfinder Sire, SAV Bismarck 5682, who has led the breed for annual registrations.
- ★ This bull has individual weaning and yearling ratios of 101 and 102, respectively, from a top-producing donor dam.
- ★ Recommended for Heifers

24 Tanner Bismarck 3309

Calved: 03/04/2013 Bull 17623981 Tattoo: 3309

GAR Grid Maker	GDAR Traveler 044	CWT
SAV Bismarck 5682	GAR Precision 2536	+3
#+15109865 SAV Abigale 0451	Schoenes Fix It 826	MARB
	SAV Abigale 6062	+64
	Bon View New Design 208	REA
Three Trees Evergreen R0361	B/R New Design 036	+51
+15022711 Brost Miss Traveler 703	Bon View Erica 443	FAT
	N Bar Emulation EXT	-016
	GT Miss Traveler 177	\$B

- ★ The donor dam of this bull has progeny weaning and yearling ratios of 103 on two natural calves.
- ★ Two maternal sisters post a collective progeny weaning ratio of 104.
- ★ Recommended for Heifers

25 Tanner Bismarck 3380

Calved: 02/27/2013 Bull 17623982 Tattoo: 3380

GAR Grid Maker	GDAR Traveler 044	CWT
SAV Bismarck 5682	GAR Precision 2536	+9
#+15109865 SAV Abigale 0451	Schoenes Fix It 826	MARB
	SAV Abigale 6062	+66
	Bon View New Design 208	REA
Three Trees Evergreen R0361	B/R New Design 036	+43
+15022711 Brost Miss Traveler 703	Bon View Erica 443	FAT
	N Bar Emulation EXT	-012
	GT Miss Traveler 177	\$B

- ★ A flush brother to the two previous bulls, by the Pathfinder Sire SAV Bismarck 5682.
- ★ The donor dam has progeny weaning and yearling ratios of 103 on two natural calves.
- ★ Recommended for Heifers

20 Tanner Expedition 1037

Calved: 02/11/2013 Bull 17578653 Tattoo: 3238

SAV Final Answer 0035	Sitz Traveler 8180	CWT
SAV Expedition 1037	SAV Emulous 8145	+43
17016444 SAV Emblynette 9020	Waimata E230	MARB
	SAV Emblynette 6660	+34
	SAV Heritage 6295	REA
Tanner Evergreen P139 A304	CAR Duke 104	+51
17046523 Evergreen P139 of Whitestone	SAV Blackcap May 4136	FAT
	Leachman Right Time	+050
	High Field Evergreen 014	\$B

- ★ This high-performance son of SAV Expedition 1037 has an individual yearling ratio of 108.
- ★ This bull was produced from a dam by SAV Heritage 6295, stemming from a Pathfinder grandam.

21 Tanner Expedition 3239

Calved: 02/11/2013 Bull 17578654 Tattoo: 3239

SAV Final Answer 0035	Sitz Traveler 8180	CWT
SAV Expedition 1037	SAV Emulous 8145	+21
17016444 SAV Emblynette 9020	Waimata E230	MARB
	SAV Emblynette 6660	+43
	BT Right Time 24J	REA
Tanner Rita 797 A333	N Bar Primrose Y3051	+70
17046582 Prospect Hill Rita 797	Rito 4L60 of 2536 BVND 208	FAT
	GAR New Design 1440	+015
		\$B

- ★ This son of SAV Expedition 1037 has an individual weaning ratio of 106, along with an individual ribeye ratio of 113, produced as the first calf from a dam by Sinclair Grass Master.
- ★ This bull traces to a world record-selling third dam.



BROST MISS TRAVELER 703 - The grandam of Lots 23, 24 and 25.

26 Tanner Bismarck 326

Calved: 02/18/2013

Bull 17577656

Tattoo: 326

GAR Grid Maker
SAV Bismarck 5682
#15109865 SAV Abigale 0451

GDAR Traveler 044
GAR Precision 2536
Schoenes Fix It 826
SAV Abigale 6062

CWT
+22
MARB
+.56
REA
+.57
FAT
+.016
\$B

SAV 8180 Traveler 004
Tanner Blackcap 2114 W744
#15983516 GAR Ext 2114

Sitz Traveler 8180
Boyd Forever Lady 8003
N Bar Emulation EXT
GAR Scotch Cap 867

- ★ This son of the proven Genex/CRI Pathfinder Sire, SAV Bismarck 5682, has individual IMF and ribeye ratios of 103.
- ★ The dam records progeny weaning and yearling ratios of 106 and 102, respectively, on two natural calves along with a progeny ribeye ratio of 102 on 11 head.
- ★ Three maternal sisters post a collective progeny weaning ratio of 109.
- ★ Recommended for Heifers

BEPD	WEPD	YEPP	MILK	BW	\$B
I+1.8	.05	I+56	.05	I+94	.05
I+26	.05	68			+74.12



SAV BISMARCK 5682 - Featuring his sons and grandsons.

27 Tanner Bismarck 2748

Calved: 10/26/2012

Bull 17562820

Tattoo: 2748

GAR Grid Maker
SAV Bismarck 5682
#15109865 SAV Abigale 0451

GDAR Traveler 044
GAR Precision 2536
Schoenes Fix It 826
SAV Abigale 6062

CWT
+12
MARB
+.47
REA
+.46
FAT
-.012
\$B

SAV 8180 Traveler 004
Tanner Pride X172
16074688 Whitestone Pride R190

Sitz Traveler 8180
Boyd Forever Lady 8003
Three Trees Designer 0297
Pride 565N of Whitestone

- ★ A three-quarter brother to the previous bull, backed by the successful blending of the Pathfinder Sires, SAV Bismarck 5682 and SAV 8180 Traveler 004.
- ★ This bull stems from a long line of females bred at Whitestone Farm.
- ★ Recommended for Heifers

BEPD	WEPD	YEPP	MILK	BW	\$B
I+.9	.36	+43	.28	+75	.28
+23	.22	71			+59.41

28 Tanner Bismarck 2932

Calved: 12/20/2012

Bull 17578629

Tattoo: 2932

GAR Grid Maker
SAV Bismarck 5682
#15109865 SAV Abigale 0451

GDAR Traveler 044
GAR Precision 2536
Schoenes Fix It 826
SAV Abigale 6062

CWT
+22
MARB
+.47
REA
+.67
FAT
-.009
\$B

Harveys New Direction 665
Tanner Pride A143
16977341 Harvey's Right Girl 536

CA Future Direction 5321
Harveys Hyline Pride 003
Leachman Right Time
Harvey's Hy Pride 237

- ★ A high-performance son of SAV Bismarck 5682 with individual weaning and yearling ratios of 109 and 105, respectively, combined with an individual ribeye ratio of 105, as his dam's first calf.
- ★ The grandam is by Leachman Right Time.

BEPD	WEPD	YEPP	MILK	BW	\$B
+3.2	.36	+59	.27	+99	.27
+25	.19	71			+74.98

29 Tanner Bismarck 3245

Calved: 02/14/2013

Bull 17616615

Tattoo: 3245

GAR Grid Maker
SAV Bismarck 5682
#15109865 SAV Abigale 0451

GDAR Traveler 044
GAR Precision 2536
Schoenes Fix It 826
SAV Abigale 6062

CWT
+16
MARB
+.36
REA
+.51
FAT
-.003
\$B

HA Perfect Image 4709
Tanner Wintress X128
16047809 Koupals Wintress 0105

HA Image Maker 0415
VF 4106 Eileen 4066-6093
Basin Ambush 568G
Beefland Wintress K5117

- ★ This calving-ease herd sire prospect by SAV Bismarck 5682 combines an individual birth ratio of 93 with individual weaning and yearling ratios of 110 and 104, respectively, and an individual ribeye ratio of 105.
- ★ The dam records a progeny weaning ratio of 106 on three calves and the grandam is a Pathfinder Dam.
- ★ Recommended for Heifers

BEPD	WEPD	YEPP	MILK	BW	\$B
+1.4	.37	+53	.28	+90	.28
+29	.22	75			+60.59

30 Tanner Brand Name 3102

Calved: 01/01/2013

Bull 17563151

Tattoo: 3102

SAV Bismarck 5682
SAV Brand Name 9115
16396519 SAV Blackcap May 5530

GAR Grid Maker
SAV Abigale 0451
BCC Bushwacker 41-93
SAV May 7238

CWT
+42
MARB
+.28
REA
+.65
FAT
+.022
\$B

SAV 8180 Traveler 004
Tanner Gammer 850
#15659074 Bon View Gammer 85

Sitz Traveler 8180
Boyd Forever Lady 8003
Bon View Bando 598
Bon View Gammer 233

- ★ A royally-bred herd sire prospect by the Genex/CRI featured sire, SAV Brand Name 9115, with individual IMF and ribeye ratios of 109 and 107, respectively.
- ★ The donor dam has a progeny birth ratio of 95 combined with a progeny weaning ratio of 102 on three calves and she is a maternal sister to the ABS Global Pathfinder Sires, Bon View New Design 878 and Woodhill Foresight.

BEPD	WEPD	YEPP	MILK	BW	\$B
I+3.7	.05	I+59	.05	I+101	.05
I+26	.05	78			+81.97

31 Tanner Brand Name 3201

Calved: 02/06/2013

Bull 17575248

Tattoo: 3201

SAV Bismarck 5682
SAV Brand Name 9115
16396519 SAV Blackcap May 5530

GAR Grid Maker
SAV Abigale 0451
BCC Bushwacker 41-93
SAV May 7238

CWT
+37
MARB
+.31
REA
+.68
FAT
+.021
\$B

SAV 8180 Traveler 004
Tanner Blackcap 2114 W744
#15983516 GAR Ext 2114

Sitz Traveler 8180
Boyd Forever Lady 8003
N Bar Emulation EXT
GAR Scotch Cap 867

- ★ A three-quarter brother to the previous bull by SAV Brand Name 9115, from a dam by the Pathfinder Sire, SAV 8180 Traveler 004.
- ★ The dam of this bull has progeny weaning and yearling ratios of 106 and 102, respectively, on two natural calves with three daughters in production who post a collective progeny weaning ratio of 109.
- ★ This bull has an individual yearling ratio of 105 and an individual ribeye ratio of 110.

BEPD	WEPD	YEPP	MILK	BW	\$B
+3.5	.34	+60	.28	+104	.28
+26	.20	85			+80.16

32 Tanner Brand Name 3249

Calved: 02/16/2013

Bull 17616691

Tattoo: 3249

SAV Bismarck 5682
SAV Brand Name 9115
16396519 SAV Blackcap May 5530

GAR Grid Maker
SAV Abigale 0451
BCC Bushwacker 41-93
SAV May 7238

CWT
+29
MARB
+.29
REA
+.55
FAT
+.005
\$B

SAV 8180 Traveler 004
Whitestone Blackcap Y732
#16499544 Wardens Blackcap 6148 6309

Sitz Traveler 8180
Boyd Forever Lady 8003
Finks 5522-6148
Wardens Blackcap SC 025

- ★ This son of the Genex/CRI sire, SAV Brand Name 9115, has an individual birth ratio of 98 combined with an individual weaning ratio of 102.
- ★ The dam of this bull is a maternal sister to the ABS Global sire, Ironwood New Level, by the Pathfinder Sire, SAV 8180 Traveler 004.

BEPD	WEPD	YEPP	MILK	BW	\$B
+3.0	.36	+58	.28	+94	.28
+20	.19	79			+71.81

TANNER ANGUS BULLS



TANNER UPWARD 107Z - Maternal brother to Lot 35.

33 Tanner Brand Name 322

Calved: 02/13/2013 Bull 17577652 Tattoo: 322

SAV Bismarck 5682	GAR Grid Maker	CWT
SAV Brand Name 9115	SAV Abigale 0451	+28
16396519 SAV Blackcap May 5530	BCC Bushwacker 41-93	MARB
	SAV May 7238	+24
SAV Final Answer 0035	Sitz Traveler 8180	REA
Envy Rita of Conanga 849	SAV Emulous 8145	+77
16003497 Envy Ronna of Conanga 3481	Connealy Onward	FAT
	Envorala of Conanga 6303	+017

- ★ This bull records an individual ribeye ratio of 108 and he is a flush brother to two of the featured and top-selling heifers of the 2013 Whitestone Fall Sale.

- ★ The dam is a former Tanner and Whitestone donor bred in the Connealy herd, by SAV Final Answer 0035.

34 Tanner Brand Name 2836

Calved: 11/20/2012 Bull 17563141 Tattoo: 2836

SAV Bismarck 5682	GAR Grid Maker	CWT
SAV Brand Name 9115	SAV Abigale 0451	+24
16396519 SAV Blackcap May 5530	BCC Bushwacker 41-93	MARB
	SAV May 7238	+25
Leachman Right Time	N Bar Emulation EXT	REA
Whitestone Anita R270	Leachman Erica 0025	+44
+14581597 RC Anita T Bando 918903	Tehama Bando 155	FAT
	RC Traveling Ann 8903	+021

- ★ The result of mating the Genex/CRI sire, SAV Brand Name 9115, to a proven maternal sister to the Genex/CRI Pathfinder Sire, BCC Bushwacker 41-93.

- ★ The dam of this bull has a progeny birth ratio of 99 combined with a progeny weaning ratio of 102 on three natural calves and a progeny IMF ratio of 105 on 36 head.



ENVY RITA OF CONANGA 849
The dam of Lot 33.



WHITESTONE ANITA R270
The dam of Lot 34.

35 Tanner Brand Name 3332

Calved: 03/13/2013 Bull 17624207 Tattoo: 3332

SAV Bismarck 5682	GAR Grid Maker	CWT
SAV Brand Name 9115	SAV Abigale 0451	+28
16396519 SAV Blackcap May 5530	BCC Bushwacker 41-93	MARB
	SAV May 7238	+27
GAR Retail Product	GAR Precision 1680	REA
Callaways Elluna 0939	GAR Ext 4927	+62
#15236448 Callaways Elluna 0397	N Bar Emulation EXT	FAT
	VDAR Elluna 6157	+006

- ★ A maternal brother to Tanner Upward 107G who was selected by the Genex/CRI AI Stud as the second top-selling bull of the 2011 Tanner Fall Sale.

- ★ This bull records an individual IMF ratio of 109, by SAV Brand Name 9115, from a Pathfinder Dam with a progeny weaning ratio of 110 on four natural calves and a progeny yearling ratio of 118 on two head, along with a progeny IMF ratio of 111 on four head.

36 Tanner Brand Name 3379

Calved: 02/27/2013 Bull 17624198 Tattoo: 3379

SAV Bismarck 5682	GAR Grid Maker	CWT
SAV Brand Name 9115	SAV Abigale 0451	+28
16396519 SAV Blackcap May 5530	BCC Bushwacker 41-93	MARB
	SAV May 7238	+59
GAR Predestined	B/R New Design 036	REA
Raybar Rita 60-935	GAR Ext 4206	+71
+15898260 Toeppen Rita 3151	Twin Valley Precision E161	FAT
	GAR Ext 344	+010

- ★ A son of the proven Genex/CRI sire, SAV Brand Name 9115, with an individual IMF ratio of 107, from a donor dam who combines a progeny birth ratio of 99 with a progeny weaning ratio of 115 on two natural calves and progeny IMF and ribeye ratios of 121 and 104, respectively, on four head.

- ★ This bull has the distinction of being a full brother to the \$72,500 Genex/CRI sire, Whitestone Armando A074.

37 Tanner Armando 3164

Calved: 01/29/2013 Bull 17599267 Tattoo: 3164

SAV Brand Name 9115	SAV Bismarck 5682	CWT
Whitestone Armando A074	SAV Blackcap May 5530	+27
16965522 Raybar Rita 60-935	GAR Predestined	MARB
	Toeppen Rita 3151	+74
Koupals Glory 245	OCC Glory 950G	REA
Koupals Primrose 42	Beefland Ebonette 713	+57
14787860 Koupals Primrose 2262	Whitestone Widespread L131	FAT
	Beefland Primrose 64	+036

- ★ One of the first opportunities to select a son of the \$72,500 Genex/CRI sire, Whitestone Armando A074.

- ★ This bull records an individual yearling ratio of 113, combined with individual IMF and ribeye ratios of 143 and 117, respectively, from a dam with progeny weaning and yearling ratios of 100 and 102, respectively, on six head combined with progeny IMF and ribeye ratios of 114 and 103, respectively, on three head.

- ★ A maternal sister weaned her first calf with a ratio of 118.

38 Tanner Armando 3278

Calved: 02/23/2013 Bull 17599302 Tattoo: 3278

SAV Brand Name 9115	SAV Bismarck 5682	CWT
Whitestone Armando A074	SAV Blackcap May 5530	+15
16965522 Raybar Rita 60-935	GAR Predestined	MARB
	Toeppen Rita 3151	+52
Connealy Foundation 426	CA Future Direction 5321	REA
Evenson Ida 7107	Ruby Red of Conanga 436	+56
15850192 Evenson Ida 8160	Evenson Prompter 3103	FAT
	Evenson Ida 8185	+004

- ★ The sire of this bull was the \$72,500 top-selling bull of a past Whitestone sale and serves as a Genex/CRI sire.
- ★ The dam of this bull was selected from the Evenson Cow Herd Dispersal, backed by generations of Evenson breeding.

TANNER ANGUS BULLS

39

Tanner Harvester 3270 [DDC]

Calved: 02/20/2013 Bull 17619346 Tattoo: 3270

SAV Heritage 6295	CAR Duke 104	CWT
SAV Harvester 0338	SAV Blackcap May 4136	+50
16687737 SAV Emblynette 7749	SAV Net Worth 4200	MARB
	Sav Emblynette Diamond 6377	+65
	B/R New Design 036	REA
MS CCC 8M4 of 1063 Pred	GAR Ext 4206	+60
+16565189 MS 08 Center Ranch 6018N23	GAR Grid Maker	FAT
	GAR Sleep Easy 6018	+044

★ This high-performing bull has impressive individual weaning and yearling ratios of 118 and 117, respectively, by the popular SAV Harvester 0338 who has ranked as the breeds #1 Yearling Weight EPD sire.

★ The dam of this bull records a progeny weaning ratio of 110 on three calves.

BEPD		WEPD		YEPD		MILK		BW	\$B
+5.8	.35	+69	.27	+126	.26	+29	.13	90	+99.57



SAV HARVESTER 0338 - Featuring his sons.

40

Tanner Harvester 3286

Calved: 02/25/2013 Bull 17619350 Tattoo: 3286

SAV Heritage 6295	CAR Duke 104	CWT
SAV Harvester 0338	SAV Blackcap May 4136	+45
16687737 SAV Emblynette 7749	SAV Net Worth 4200	MARB
	Sav Emblynette Diamond 6377	+60
	B/R New Design 036	REA
GAR Predestined	GAR Ext 4206	+65
CCC 8449	Rito 616 of 4B20 6807	FAT
16287800 Rita 3182 of 1820 616	Rita 1820 of 8205 3X25	+058

★ This bull records individual weaning and yearling ratios of 108 and 105, respectively, along with an individual ribeye ratio of 116, sired by SAV Harvester 0338, the sire of the world record-selling sire group.

★ The dam has a progeny weaning ratio of 108 on three calves.

BEPD		WEPD		YEPD		MILK		BW	\$B
+5.7	.36	+58	.27	+109	.26	+28	.13	92	+92.43

43

Tanner Harvester 3277

Calved: 02/23/2013 Bull 17619349 Tattoo: 3277

SAV Heritage 6295	CAR Duke 104	CWT
SAV Harvester 0338	SAV Blackcap May 4136	+51
16687737 SAV Emblynette 7749	SAV Net Worth 4200	MARB
	Sav Emblynette Diamond 6377	+65
	B/R New Design 036	REA
Rito 5M42 of 2536 PRED	GAR Precision 2536	+72
CCC 23B9	GAR Grid Maker	FAT
+16306189 MS 08 Center Ranch 6018N23	GAR Sleep Easy 6018	+074

★ A high-performance son of SAV Harvester 0338, bred to add pounds and profit to his calf crop.

★ This bull has individual weaning and yearling ratios of 115 and 113, respectively, combined with an individual ribeye ratio of 108, from a dam with a progeny weaning ratio of 107 on three calves.

BEPD		WEPD		YEPD		MILK		BW	\$B
+5.8	.35	+68	.26	+124	.26	+27	.12	91	+97.48

41

Tanner Harvester 3279

Calved: 02/23/2013 Bull 17619345 Tattoo: 3279

SAV Heritage 6295	CAR Duke 104	CWT
SAV Harvester 0338	SAV Blackcap May 4136	+47
16687737 SAV Emblynette 7749	SAV Net Worth 4200	MARB
	Sav Emblynette Diamond 6377	+91
	B/R New Design 036	REA
GAR Predestined	GAR Ext 4206	+63
MS CCC 8969 of 316 Pred	Rito 112 of 2536 Rito 616	FAT
+16565192 J Bar J 112 Barbara 316	J Bar J 036 Barbara 002	+063

★ Bred to add performance and carcass quality, this son of SAV Harvester 0338 records individual weaning and yearling ratios of 102 and 110, respectively, along with individual IMF and ribeye ratios of 132 and 111, respectively.

★ The dam has a progeny weaning ratio of 104 on four calves, combined with progeny IMF and ribeye ratios of 121 and 113, respectively, on two head.

BEPD		WEPD		YEPD		MILK		BW	\$B
+5.9	.35	+61	.27	+120	.26	+29	.13	90	+102.25

44

Tanner Harvester 3311 [DDC]

Calved: 03/04/2013 Bull 17619353 Tattoo: 3311

SAV Heritage 6295	CAR Duke 104	CWT
SAV Harvester 0338	SAV Blackcap May 4136	+51
16687737 SAV Emblynette 7749	SAV Net Worth 4200	MARB
	Sav Emblynette Diamond 6377	+76
	B/R New Design 036	REA
Rito 5M42 of 2536 PRED	GAR Precision 2536	+57
CCC 8419	GAR Pinnacle	FAT
16261726 Rita 4N23 of Rita 9W73 PINN	Rita 9W73 of 7G19 6148	+071

★ A high-performance son of SAV Harvester 0338 with impressive individual weaning and yearling ratios of 112, combined with individual IMF and ribeye ratios of 110 and 103, respectively.

★ The dam has a progeny weaning ratio of 103 on four calves, along with progeny IMF and ribeye ratios of 117 and 104, respectively, on two head.

BEPD		WEPD		YEPD		MILK		BW	\$B
+6.1	.35	+66	.27	+120	.27	+27	.13	91	+97.69

42

Tanner Harvester 3274

Calved: 02/22/2013 Bull 17619354 Tattoo: 3274

SAV Heritage 6295	CAR Duke 104	CWT
SAV Harvester 0338	SAV Blackcap May 4136	+48
16687737 SAV Emblynette 7749	SAV Net Worth 4200	MARB
	Sav Emblynette Diamond 6377	+67
	B/R New Design 036	REA
Rito 5M42 of 2536 PRED	GAR Precision 2536	+66
CCC 8848	Rito 112 of 2536 Rito 616	FAT
+16185776 J Bar J 112 Barbara 316	J Bar J 036 Barbara 002	+064

★ A three-quarter brother to the previous bull, sired by SAV Harvester 0338.

★ This bull has individual weaning and yearling ratios of 113 and 106, respectively, along with an individual ribeye ratio of 106, from a dam who records progeny weaning and yearling ratios of 110 and 106, respectively, on two calves.

BEPD		WEPD		YEPD		MILK		BW	\$B
+5.9	.35	+66	.26	+118	.26	+28	.13	93	+96.12



SAV HERITAGE 6295 - His sons and grandsons sell.

TANNER ANGUS BULLS



SAV RECORD HARVEST 2186 - Paternal brother to Lots 39 through 46.

45 Tanner Harvester 3287

Calved: 02/26/2013

Bull 17619343

Tattoo: 3287

SAV Heritage 6295
SAV Harvester 0338
16687737 SAV Emblynette 7749

CAR Duke 104
SAV Blackcap May 4136
SAV Net Worth 4200
Sav Emblynette Diamond 6377

CWT
+46
MARB
+.69
REA
+.57
FAT
+.064
\$B
+.94.56

Prime Maker Plus
Ms CCC 15D9 of 2494 PrimPL
+16591160 MS CR 111 2494 919P1

★ A son of SAV

Harvester 0338

who is the record-selling bull of his calf crop and went on to sire the world record-selling sire group.

★ This bull has individual IMF and ribeye ratios of 103 and 111, respectively, from a dam with progeny IMF and ribeye ratios of 102 and 101, respectively, on three head.

BEPD		WEPD		YEPD		MILK		BW	\$B
+6.3	.35	+55	.26	+112	.26	+22	.12	91	+94.56

46 Tanner Harvester 3291

Calved: 02/27/2013

Bull 17619358

Tattoo: 3291

SAV Heritage 6295
SAV Harvester 0338
16687737 SAV Emblynette 7749

CAR Duke 104
SAV Blackcap May 4136
SAV Net Worth 4200
Sav Emblynette Diamond 6377

CWT
+46
MARB
+.77
REA
+.69
FAT
+.060
\$B
+.97.72

GAR Solution
GAR Solution M215
+15237138 GAR Precision 1541

SS Traveler 6807 T510
GAR New Design 50
GAR Precision 1680
GAR Pierre 1322

★ This bull records individual

weaning and yearling ratios of 103 and 102, respectively, combined with individual IMF and ribeye ratios of 131 and 106, respectively.

★ The dam of this bull has a progeny weaning ratio of 103 on four natural calves and a progeny yearling ratio of 104 on three head along with progeny IMF and ribeye ratios of 105 and 108, respectively, on nine head.

BEPD		WEPD		YEPD		MILK		BW	\$B
+4.4	.36	+57	.27	+108	.27	+28	.14	92	+97.72



SAV INTERNATIONAL 2020 - Paternal brother to Lots 39 through 46.

47 Tanner Heritage 3257

Calved: 02/18/2013

Bull 17623992

Tattoo: 3257

CAR Duke 104
SAV Heritage 6295
15369205 SAV Blackcap May 4136

Car Tracker 904
CAR Miss Raindancer 421
SAV 8180 Traveler 004
SAV May 2397

Bon View New Design 1407
SandPoint Rita 4213
+15295589 EF Rita 793

B/R New Design 036
Bon View Pride 664
DHD Traveler 6807
GAR Scotch Cap 199

CWT
+35
MARB
+.21
REA
+.64
FAT
+.023
\$B
+.73.44

★ The first of three

flush brothers by

the Genex/CRI high-performance sire, SAV Heritage 6295, from a donor dam with a progeny birth ratio of 96 combined with a progeny weaning ratio of 104 on six natural calves.

★ A maternal sister records a progeny weaning ratio of 116 on two calves.

BEPD		WEPD		YEPD		MILK		BW	\$B
1+4.3	.05	1+58	.05	1+101	.05	1+29	.05	67	+73.44

48 Tanner Heritage 3258

Calved: 02/18/2013

Bull 17623995

Tattoo: 3258

CAR Duke 104
SAV Heritage 6295
15369205 SAV Blackcap May 4136

Car Tracker 904
CAR Miss Raindancer 421
SAV 8180 Traveler 004
SAV May 2397

Bon View New Design 1407
SandPoint Rita 4213
+15295589 EF Rita 793

B/R New Design 036
Bon View Pride 664
DHD Traveler 6807
GAR Scotch Cap 199

CWT
+34
MARB
+.24
REA
+.65
FAT
+.009
\$B
+.75.33

★ This bull is a

paternal brother

to SAV Harvester 0338, by the proven Genex/CRI sire, SAV Heritage 6295.

★ A maternal sister records a progeny weaning ratio of 116 on two calves.

BEPD		WEPD		YEPD		MILK		BW	\$B
1+4.3	.05	1+58	.05	1+101	.05	1+29	.05	72	+75.33

49 Tanner Heritage 3310

Calved: 03/04/2013

Bull 17623997

Tattoo: 3310

CAR Duke 104
SAV Heritage 6295
15369205 SAV Blackcap May 4136

Car Tracker 904
CAR Miss Raindancer 421
SAV 8180 Traveler 004
SAV May 2397

Bon View New Design 1407
SandPoint Rita 4213
+15295589 EF Rita 793

B/R New Design 036
Bon View Pride 664
DHD Traveler 6807
GAR Scotch Cap 199

CWT
+40
MARB
+.19
REA
+.74
FAT
+.034
\$B
+.76.80

★ This son of

SAV Heritage

6295 has individual weaning and yearling ratios of 101 and 113, respectively, combined with an individual ribeye ratio of 115, from a dam with a progeny weaning ratio of 104 on six natural calves.

★ A maternal sister records a progeny weaning ratio of 116 on two calves.

Cattle Stocking Cap 1997								1998	
BEPD		WEPD		YEPD		MILK		BW	\$B
+4.9	.37	+56	.29	+106	.28	+29	.22	87	+76.80



SAV HESSTON 2217 - Paternal brother to Lots 39 through 46.

50 Tanner Upward 2942

Calved: 12/24/2012

Bull 17616591

Tattoo: 2942

Connealy Onward
Sitz Upward 307R
#14963730 Sitz Henrietta Pride 81M

Connealy Lead On
Altune of Conanga 6104
Sitz Value 7097
Sitz Henrietta Pride 1370

CWT
+57
MARB
+55
REA
+.67
FAT
+.012
\$B

SAV Net Worth 4200

Tanner Erica Eileen 958Y
16689251 Whitestone Erica Eileen 609T

SAV 8180 Traveler 004
SAV May 2410
BR Midland
TC Erica Eileen 6045

★ This son of the Pathfinder

BEPD	WEPD	YEPD	MILK	BW	\$B
+2.2	.37	+60	.29	+112	.29
+34	.22	76	+102.37		

Sire, Sitz Upward 307R, records individual weaning and yearling ratios of 109, combined with an individual ribeye ratio of 114.

★ The dam is a daughter of the Pathfinder Sire, SAV Net Worth 4200, with a progeny birth ratio of 96 combined with progeny weaning and yearling ratios of 107 and 103, respectively, and progeny IMF and ribeye ratios of 103 on two calves.



SITZ UPWARD 307R - Featuring his sons.

51 Tanner Upward 2940

Calved: 12/23/2012

Bull 17616596

Tattoo: 2940

Connealy Onward
Sitz Upward 307R
#14963730 Sitz Henrietta Pride 81M

Connealy Lead On
Altune of Conanga 6104
Sitz Value 7097
Sitz Henrietta Pride 1370

CWT
+57
MARB
+39
REA
+.34
FAT
+.036
\$B

SAV 8180 Traveler 004

Tanner Rita 944Y
+16679031 EXG Limestone PrimeTime M097

Sitz Traveler 8180
Boyd Forever Lady 8003
Bon View New Design 878
GAR Prime Time H79

★ A blending of the proven

BEPD	WEPD	YEPD	MILK	BW	\$B
+2.7	.36	+58	.28	+108	.28
+29	.22	76	+88.57		

Pathfinder Sires, Sitz Upward 307R and SAV 8180 Traveler 004, who have both led the breed for annual registrations.

★ A paternal brother was the second top-selling bull 2011 Tanner Fall Sale.

54 Tanner Upward 3127

Calved: 01/13/2013

Bull 17616589

Tattoo: 3127

Connealy Onward
Sitz Upward 307R
#14963730 Sitz Henrietta Pride 81M

Connealy Lead On
Altune of Conanga 6104
Sitz Value 7097
Sitz Henrietta Pride 1370

CWT
+55
MARB
+47
REA
+.49
FAT
+.009
\$B

Koupals B&B Traveler 4062

Tanner Blackclass 309Z
16706320 Circle G Blackclass 5113

SAV 8180 Traveler 004
Koupal Voltage 5016
GAR Retail Product
Masterfare Blackclass 2217

★ A high-performance

BEPD	WEPD	YEPD	MILK	BW	\$B
+2.0	.37	+64	.28	+111	.28
+31	.21	75	+96.96		

son of the Pathfinder Sire, Sitz Upward 307R, with an individual birth ratio of 99 combined with individual weaning and yearling ratios of 114 and 113, respectively, and an individual ribeye ratio of 102.

★ The dam has a progeny birth ratio of 94 combined with a progeny weaning ratio of 101 on three calves and a progeny yearling ratio of 109, combined with progeny IMF and ribeye ratios of 101 and 104, respectively, on two head.

★ Recommended for Heifers

55 Tanner Upward 3207

Calved: 02/02/2013

Bull 17616592

Tattoo: 3207

Connealy Onward
Sitz Upward 307R
#14963730 Sitz Henrietta Pride 81M

Connealy Lead On
Altune of Conanga 6104
Sitz Value 7097
Sitz Henrietta Pride 1370

CWT
+46
MARB
+41
REA
+.33
FAT
+.019
\$B

Koupals B&B Traveler 4062

Tanner Bonnie 218Z
16687169 EHF Bonnie E478

SAV 8180 Traveler 004
Koupal Voltage 5016
BCC Bushwacker 41-93
Finks Bonnie 0105 6241 Fix

★ This bull is a three-quarter

BEPD	WEPD	YEPD	MILK	BW	\$B
+3.5	.37	+53	.28	+89	.28
+31	.21	78	+85.11		

brother to the record-selling Genex/CRI sire, Whitestone Black Arrow Z101, from the successful blending of Sitz Upward 307R with Koupals B&B Traveler 4062.

★ This bull has an individual weaning ratio of 102.



SITZ HENRIETTA PRIDE 643T - Full sister to Sitz Upward 307R, whose sons sell.

52 Tanner Upward 2944

Calved: 12/25/2012

Bull 17616587

Tattoo: 2944

Connealy Onward
Sitz Upward 307R
#14963730 Sitz Henrietta Pride 81M

Connealy Lead On
Altune of Conanga 6104
Sitz Value 7097
Sitz Henrietta Pride 1370

CWT
+49
MARB
+.32
REA
+.33
FAT
+.009
\$B

Koupals B&B Traveler 4062

Tanner Erica 313Z
16706321 Whitestone Erica 507T

SAV 8180 Traveler 004
Koupal Voltage 5016
Whitestone Survivor N088
Toebben Erica 156J

★ This son of the Pathfinder

BEPD	WEPD	YEPD	MILK	BW	\$B
+2.6	.37	+58	.28	+100	.28
+30	.21	73	+84.70		

Sire, Sitz Upward 307R, has a progeny birth ratio of 97 combined with progeny weaning and yearling ratios of 111 and 108, respectively, from a dam with a progeny birth ratio of 99 combined with a progeny weaning ratio of 101 on three calves.

★ This bull is a three-quarter brother to Whitestone Black Arrow Z101.

53 Tanner Upward 2947

Calved: 12/25/2012

Bull 17578632

Tattoo: 2947

Connealy Onward
Sitz Upward 307R
#14963730 Sitz Henrietta Pride 81M

Connealy Lead On
Altune of Conanga 6104
Sitz Value 7097
Sitz Henrietta Pride 1370

CWT
+48
MARB
+46
REA
+.53
FAT
+.017
\$B

Koupals B&B Traveler 4062

Tanner Lady Lucy A314
17031663 Tanner Lady Lucy 718

SAV 8180 Traveler 004
Koupal Voltage 5016
B/R New Frontier 095
Lucy P008 of Whitestone

★ A son of the Pathfinder Sire,

BEPD	WEPD	YEPD	MILK	BW	\$B
+2.8	.36	+51	.28	+97	.27
+28	.21	73	+91.98		

Sitz Upward 307R, with an individual ribeye ratio of 109.

★ This bull is a three-quarter brother to Whitestone Black Arrow Z101.

TANNER ANGUS BULLS



TANNER UPWARD 2831 - Lot 56

58 Tanner Upward 2919

Calved: 12/13/2012

Bull 17616593

Tattoo: 2919

Connealy Onward
Sitz Upward 307R
#14963730 Sitz Henrietta Pride 81M

Connealy Lead On
Altune of Conanga 6104
Sitz Value 7097
Sitz Henrietta Pride 1370

CWT
+51
MARB
+43
REA
+83
FAT
+008

GAR New Design 5050
Tanner Rita 252Z
16686058 Thistle Q8R5 of 8R5 2 878

B/R New Design 036
GAR Precision 706
Rito 2 878 of 2536 BVND 878
TF Rita 8R5 of 1418

★ This son of the high-performance Pathfinder Sire, Sitz Upward 307R, has an individual yearling ratio of 108.

★ The dam records progeny weaning and yearling ratios of 102 and 103, respectively, on two calves.

BEPD	WEPD	YEPD	MILK	BW	\$B
+3.2	.37	+53	.28	+109	.28
+34	.22	82	+97.78		

59 Tanner Upward 321

Calved: 02/17/2013

Bull 17577651

Tattoo: 321

Connealy Onward
Sitz Upward 307R
#14963730 Sitz Henrietta Pride 81M

Connealy Lead On
Altune of Conanga 6104
Sitz Value 7097
Sitz Henrietta Pride 1370

CWT
+53
MARB
+69
REA
+58
FAT
+029

GAR Predestined
JLM Blackcap 6973
+16082602 A Plus Blackcap 1179

B/R New Design 036
GAR Ext 4206
GAR Precision 1680
A Plus Blackcap 8102

★ A product of the embryo program by the Pathfinder Sire, Sitz Upward 307R, who has led the breed for annual registrations.

★ The dam has progeny IMF and ribeye ratios of 108 and 101, respectively, on seven head.

BEPD	WEPD	YEPD	MILK	BW	\$B
+2.8	.05	+56	.05	+104	.05
+30	.05	80	+101.24		

60 Tanner Upward 2935

Calved: 12/22/2012

Bull 17616590

Tattoo: 2935

Connealy Onward
Sitz Upward 307R
#14963730 Sitz Henrietta Pride 81M

Connealy Lead On
Altune of Conanga 6104
Sitz Value 7097
Sitz Henrietta Pride 1370

CWT
+63
MARB
+54
REA
+41
FAT
+008

Whitestone Predestined X056
Tanner Rita 257Z
16690143 Tanner Rita 770

GAR Predestined
Bon View Gammer 85
B/R New Frontier 095
Rita P057 of Whitestone

★ This high-performance son of Sitz Upward 307R has an individual weaning ratio of 112 combined with an individual yearling ratio of 110.

★ The dam records a progeny weaning ratio of 104 on three calves and a progeny yearling ratio of 112, combined with progeny IMF and ribeye ratios of 110 and 101, respectively, on two head while the grandam is a Pathfinder Dam.

BEPD	WEPD	YEPD	MILK	BW	\$B
+2.9	.37	+63	.28	+115	.28
+34	.21	83	+101.20		

61 Tanner Black Arrow 2930

Calved: 12/19/2012

Bull 17599238

Tattoo: 2930

Sitz Upward 307R
Whitestone Black Arrow Z101
16649387 Whitestone Evergreen W243

Connealy Onward
Sitz Henrietta Pride 81M
Koupals B&B Traveler 4062
Whitestone Evergreen U170

CWT
+42
MARB
+50
REA
+28
FAT
+027

SAV 8180 Traveler 004
Tanner Blackclass 912Y
16689155 Britton Blackclass 4084

Sitz Traveler 8180
Boyd Forever Lady 8003
B/R New Design 036
GAR 6148 Emulation 2099

★ This son of the record-selling Genex/CRI sire, Whitestone Black Arrow Z101, has individual weaning and yearling ratios of 115 combined with individual IMF and ribeye ratios of 105 and 101, respectively.

★ The dam records progeny weaning and yearling ratios of 109 on two calves.

BEPD	WEPD	YEPD	MILK	BW	\$B
+4.1	.36	+59	.28	+104	.27
+30	.13	83	+85.15		

56 Tanner Upward 2832 [DDC]

Calved: 11/20/2012

Bull 17563138

Tattoo: 2832

Connealy Onward
Sitz Upward 307R
#14963730 Sitz Henrietta Pride 81M

Connealy Lead On
Altune of Conanga 6104
Sitz Value 7097
Sitz Henrietta Pride 1370

CWT
+45
MARB
+39
REA
+62
FAT
-012

Bon View New Design 1407
SandPoint Rita 4213
+15295589 EF Rita 793

B/R New Design 036
Bon View Pride 664
DHD Traveler 6807
GAR Scotch Cap 199

★ The first of two flush brothers by the high-performance Pathfinder Sire, Sitz Upward 307R, from a donor dam with a progeny birth ratio of 96 combined with a progeny weaning ratio of 104 on six natural calves.

★ This bull has an individual weaning ratio of 103.

BEPD	WEPD	YEPD	MILK	BW	\$B
+3.7	.37	+57	.29	+93	.28
+35	.23	84	+90.73		

57 Tanner Upward 2846

Calved: 11/23/2012

Bull 17564356

Tattoo: 2846

Connealy Onward
Sitz Upward 307R
#14963730 Sitz Henrietta Pride 81M

Connealy Lead On
Altune of Conanga 6104
Sitz Value 7097
Sitz Henrietta Pride 1370

CWT
+49
MARB
+36
REA
+67
FAT
-012

Bon View New Design 1407
SandPoint Rita 4213
+15295589 EF Rita 793

B/R New Design 036
Bon View Pride 664
DHD Traveler 6807
GAR Scotch Cap 199

★ This flush brother to the previous bull is a son of the Pathfinder Sire, Sitz Upward 307R, backed by generations of proven genetics.

★ The dam records a progeny birth ratio of 96 combined with a progeny weaning ratio of 104 on six natural calves, while a maternal sister has a progeny weaning ratio of 116 on two calves.

BEPD	WEPD	YEPD	MILK	BW	\$B
+3.6	.37	+53	.29	+106	.28
+35	.23	84	+93.92		



TANNER UPWARD 2846 - Lot 57

TANNER ANGUS BULLS



TANNER BLACK ARROW 2823 - Lot 62



TANNER BLACK ARROW 2901 - Lot 64

62 Tanner Black Arrow 2823

Calved: 11/16/2012 Bull 17563131 Tattoo: 2823

Sitz Upward 307R
Whitestone Black Arrow Z101
16649387 Whitestone Evergreen W243

SAV 8180 Traveler 004
Tanner Gammer 850
+15659074 Bon View Gammer 85

Connealy Onward
Sitz Henrietta Pride 81M
Koupals B&B Traveler 4062
Whitestone Evergreen U170
Sitz Traveler 8180
Boyd Forever Lady 8003
Bon View Bando 598
Bon View Gammer 233

CWT
+48
MARB
+37
REA
+27
FAT
+028
\$B
+82.79

- ★ The first of two flush brothers who combine the herd sire producing Gammer and Evergreen families, by Whitestone Black Arrow Z101.
- ★ This bull has individual IMF and ribeye ratios of 102 and 104, respectively, from a donor dam who combines a progeny birth ratio of 95 with a progeny weaning ratio of 102 on three calves.

63 Tanner Black Arrow 3118

Calved: 01/28/2013 Bull 17575287 Tattoo: 3118

Sitz Upward 307R
Whitestone Black Arrow Z101
16649387 Whitestone Evergreen W243

SAV 8180 Traveler 004
Tanner Gammer 850
+15659074 Bon View Gammer 85

Connealy Onward
Sitz Henrietta Pride 81M
Koupals B&B Traveler 4062
Whitestone Evergreen U170
Sitz Traveler 8180
Boyd Forever Lady 8003
Bon View Bando 598
Bon View Gammer 233

CWT
+44
MARB
+31
REA
+22
FAT
+026
\$B
+77.93

- ★ This flush brother to the previous bull is by the record-selling Genex/CRI sire, Whitestone Black Arrow Z101, from a donor dam with a progeny birth ratio of 95 combined with a progeny weaning ratio of 102 on three calves.
- ★ The dam is a maternal sister to both Bon View New Design 878 and Woodhill Foresight.



SINCLAIR ENCHANTRESS 2X3 X412

The dam of Lot 64.



TANNER GAMMER 850
The dam of Lots 62 and 63.

64 Tanner Black Arrow 2901

Calved: 12/01/2012 Bull 17563149 Tattoo: 2901

Sitz Upward 307R
Whitestone Black Arrow Z101
16649387 Whitestone Evergreen W243

N Bar Emulation EXT
Sinclair Enchantress 2X3 X412
+14311957 N Bar Enchantress 4908

Connealy Onward
Sitz Henrietta Pride 81M
Koupals B&B Traveler 4062
Whitestone Evergreen U170
Emulation N Bar 5522
N Bar Primrose 2424
Basin Emulation 5953
Coffey Enchantress 424

CWT
+47
MARB
+18
REA
+35
FAT
-005
\$B
+78.37

- ★ The donor dam of this bull was selected by Tanner Farms and Whitestone Farm as one of the top-selling cows of the Sinclair Mature Cow Herd Offering, and she is a full sister to the famous N Bar Shadow X4124.
- ★ A maternal sister was one of the featured and top-selling lots of a past Tanner sale.
- ★ Recommended for Heifers

65 Tanner Black Arrow 2731

Calved: 10/18/2012 Bull 17530948 Tattoo: 2731

Sitz Upward 307R
Whitestone Black Arrow Z101
16649387 Whitestone Evergreen W243

BT Right Time 24J
Sinclair K BTY 6BT21 2G1
15380734 N Bar Kinochtry Bty SCC 2G1

Connealy Onward
Sitz Henrietta Pride 81M
Koupals B&B Traveler 4062
Whitestone Evergreen U170
Leachman Right Time
Sitz Everelda Entense 1905
Gardens Prime Time
N Bar Kinochtry Bty V1499A

CWT
+25
MARB
+32
REA
+12
FAT
+019
\$B
+61.47

- ★ A member of the noted Kinochtry Beauty family developed in the Sinclair and N Bar programs.
- ★ This bull is by the Genex/CRI sire who is the record-selling bull ever at Whitestone Farm.
- ★ Recommended for Heifers



TANNER BLACK ARROW 2731 - Lot 65



TANNER BLACK ARROW 2831 - Lot 66

66 Tanne Black Arrow 2831

Calved: 11/20/2012 Bull 17563137 Tattoo: 2831

Whitestone Black Arrow Z101 16649387	Sitz Upward 307R Whitestone Evergreen W243	Connealy Onward Sitz Henrietta Pride 81M Koupals B&B Traveler 4062 Whitestone Evergreen U170	CWT +28 MARB +35 REA +29 FAT -0.28 \$B +73.64
Monarch 2536 Peg 712 +15886862 TC Peg 7616	GAR Grid Maker	GDAR Traveler 044 GAR Precision 2536 Bon View Bando 598 TC Peg 0111	

- ★ This son of the Genex/CRI sire, Whitestone Black Arrow Z101, records an individual weaning and yearling ratios of 102 along with an individual IMF ratio of 106.
- ★ A maternal sister has a progeny weaning ratio of 108 on three calves.

67 Tanner Black Arrow 2840

Calved: 11/21/2012 Bull 17563145 Tattoo: 2840

Whitestone Black Arrow Z101 16649387	Sitz Upward 307R Whitestone Evergreen W243	Connealy Onward Sitz Henrietta Pride 81M Koupals B&B Traveler 4062 Whitestone Evergreen U170	CWT +26 MARB +27 REA +22 FAT -0.27 \$B +67.33
Monarch 2536 Peg 712 +15886862 TC Peg 7616	GAR Grid Maker	GDAR Traveler 044 GAR Precision 2536 Bon View Bando 598 TC Peg 0111	

- ★ This flush brother to the previous bull is by Whitestone Black Arrow Z101, tracing to the famous TC Peg 0111.
- ★ A maternal sister records a progeny weaning ratio of 108 on three calves.



WHITESTONE EVERGREEN W243 - The dam of Whitestone Black Arrow Z101, whose sons sell.

68 Tanner Black Arrow 3205

Calved: 02/01/2013 Bull 17599276 Tattoo: 3205

Whitestone Black Arrow Z101 16649387	Sitz Upward 307R Whitestone Evergreen W243	Connealy Onward Sitz Henrietta Pride 81M Koupals B&B Traveler 4062 Whitestone Evergreen U170	CWT +24 MARB +30 REA +22 FAT +0.25 \$B +60.61
Buford Heiress 9032 16538379	SAV Final Answer 0035 J Bar 7 Heiress Maddi 410	Sitz Traveler 8180 SAV Emulous 8145 J Bar 7 Vision 170J J Bar 7 Ms Rainmaker 35K	

- ★ This son of Whitestone Black Arrow Z101 is a grandson of the Pathfinder Sires, Sitz Upward 307R and SAV Final Answer 0035.
- ★ The dam has a progeny birth ratio of 99 combined with a progeny weaning ratio of 103 on three calves and a progeny yearling ratio of 105 on two head.
- ★ Recommended for Heifer

69 Tanner Black Arrow 3150

Calved: 01/25/2013 Bull 17599259 Tattoo: 3150

Whitestone Black Arrow Z101 16649387	Sitz Upward 307R Whitestone Evergreen W243	Connealy Onward Sitz Henrietta Pride 81M Koupals B&B Traveler 4062 Whitestone Evergreen U170	CWT +33 MARB +51 REA +52 FAT +0.07 \$B +84.49
Whitestone Blackbird 807X +16183804	SS Objective T510 OT26 Whitestone EHF Blackbird2219	SS Traveler 6807 T510 SS Miss Rita R011 7R8 BCC Bushwacker 41-93 ACF Blackbird 0298	

- ★ A blending of the Pathfinder Sires, Sitz Upward 307R and SS Objective T510 OT26.
- ★ This bull has individual weaning and yearling ratios of 108 and 104, respectively, combined with individual IMF and ribeye ratios of 111 and 102, respectively, from a dam who records a progeny weaning ratio of 105 on three calves and a progeny yearling ratio of 105 on two head, along with progeny IMF and ribeye ratios of 104 and 102, respectively, on three head.

70 Tanner Black Arrow 3284

Calved: 02/23/2013 Bull 17599305 Tattoo: 3284

Whitestone Black Arrow Z101 16649387	Sitz Upward 307R Whitestone Evergreen W243	Connealy Onward Sitz Henrietta Pride 81M Koupals B&B Traveler 4062 Whitestone Evergreen U170	CWT +37 MARB +64 REA +31 FAT +0.03 \$B +90.68
KMK Evergreen T111 16054488	SS Objective T510 OT26 Baldridge Evergreen R140	SS Traveler 6807 T510 SS Miss Rita R011 7R8 Rito 112 of 2536 Rito 616 Baldridge Evergreen L523	

- ★ A low birth, high-performance son of Whitestone Black Arrow Z101, with an individual birth ratio of 99 combined with impressive individual weaning and yearling ratios of 114 and 120, respectively, and an individual IMF ratio of 119.
- ★ The dam records a progeny birth ratio of 96 combined with a progeny weaning ratio of 103 on four calves and a progeny yearling ratio of 110 on two head, combined with a progeny IMF ratio of 110 on two head.
- ★ Recommended for Heifers

71 Tanner Black Arrow 3208

Calved: 02/02/2013 Bull 17599277 Tattoo: 3208

Whitestone Black Arrow Z101 16649387	Sitz Upward 307R Whitestone Evergreen W243	Connealy Onward Sitz Henrietta Pride 81M Koupals B&B Traveler 4062 Whitestone Evergreen U170	CWT +29 MARB +47 REA +24 FAT -0.02 \$B +76.64
Tanner Pride 914Y 16689286	SS Objective T510 OT26 Mindemann Pride 518	SS Traveler 6807 T510 SS Miss Rita R011 7R8 Leachman Right Time Acf Pride 7172	

- ★ A calving-ease herd sire prospect by Whitestone Black Arrow Z101, from a dam backed by the Pathfinder Sires, SS Objective T510 OT26 and Leachman Right Time.
- ★ This bull has an individual IMF ratio of 104 along with a very modest individual birth ratio of 87.
- ★ Recommended for Heifers

72 Tanner Black Arrow 3304

Calved: 02/28/2013

Bull 17599314

Tattoo: 3304

Sitz Upward 307R	Connealy Onward	CWT
Whitestone Black Arrow Z101	Sitz Henrietta Pride 81M	+33
16649387	Koupals B&B Traveler 4062	MARB
Whitestone Evergreen W243	Whitestone Evergreen U170	+59
B/R New Frontier 095	B/R New Design 036	REA
Tanner Pride X189	White Fence Pride H1	+30
16074704	SS Traveler 6807 T510	FAT
Pride P027 of Whitestone	Whitestone Pride M056	+001

★ This son of Whitestone	Whitestone Price Model								7.001
	BEPD		WEPD		YEPD		MILK	BW	\$B
	+1.3	.37	+49	.28	+94	.28	+26	.13	80

Black Arrow Z101 has an individual IMF ratio of 114, from a dam with a progeny IMF ratio of 104 on four head.

★ This bull also has a maternal sister in production with a progeny weaning ratio of 109 on two calves, backed by generations of Whitestone breeding.

★ Recommended for Heifers



WHITESTONE BLACK ARROW Z101 - Featuring his sons.

73 Tanner Black Arrow 3272

Calved: 02/22/2013

Bull 17599300

Tattoo: 3272

Sitz Upward 307R	Connealy Onward	CWT
Whitestone Black Arrow Z101	Sitz Henrietta Pride 81M	+37
16649387	Koupals B&B Traveler 4062	MARB
Whitestone Evergreen W243	Whitestone Evergreen U170	+34
Rally New Frontier 5233	B/R New Frontier 095	REA
EVENSON Queen Dolly 7207	Rally Tibbie 5380	+29
#15847994	HARB Cincha 829	FAT
EVENSON Queen Dolly 483	Evenson Queen Dolly 8111	+008

★ The Pathfinder Dam of this	BEPD		WEPD		YEPD		MILK		BW	\$B
	+2.7	.37	+52	.28	+99	.28	+26	.13	85	+77.66

bull was selected from the Evenson Mature Cow Herd Dispersal and she has a progeny weaning ratio of 103 on six calves along with a progeny yearling ratio of 103 on four head.

★ This bull records individual IMF and ribeye ratios of 104 and 103, respectively.

74 Tanner Black Arrow 3273

Calved: 02/22/2013

Bull 17599301

Tattoo: 3273

Sitz Upward 307R	Connealy Onward	CWT
Whitestone Black Arrow Z101	Sitz Henrietta Pride 81M	+27
16649387	Koupals B&B Traveler 4062	MARB
Whitestone Evergreen W243	Whitestone Evergreen U170	+37
OCC Juneau 807J	OCC Emblazon 854E	REA
Robbins Miss Pride 8066	OCC Dixie Erica 903E	+43
16832292	Playman of Raw Hyde	FAT
MAR Miss Pride 19 M171	MAR Miss Pride 86 M87	+007

★ A son of Whitestone	BEPD		WEPD		YEPD		MILK		BW	\$B
	+2.1	.37	+50	.28	+84	.27	+26	.13	81	+72.44

Black Arrow Z101 with an individual IMF ratio of 107, from a dam with a progeny birth ratio of 99 balanced with a progeny weaning ratio of 102 on five calves and a progeny yearling ratio of 105 on three head.

★ A maternal sister weaned her first calf with a ratio of 104.

★ Recommended for Heifers

75 Tanner Black Arrow 3165

Calved: 01/29/2013

Bull 17599268

Tattoo: 3165

Sitz Upward 307R	Connealy Onward	CWT
Whitestone Black Arrow Z101	Sitz Henrietta Pride 81M	+25
16649387	Koupals B&B Traveler 4062	MARB
Whitestone Evergreen W243	Whitestone Evergreen U170	+31
Koupals Glory 1206	OCC Glory 950G	REA
Koupals SH Zara 5212	Beefland Zara 7124	+10
15105097	Koupals Dante 8148	FAT
Koupals SH Zara 0256	Beefland Zara K428	+007

★ This moderate birth weight son	Deerland Zaira R428									+1.007
	BEPD		WEPD		YEPD		MILK		BW	\$B
	+1.5	.37	+42	.28	+77	.27	+23	.13	72	+62.40

of Whitestone Black Arrow Z101 has an individual birth ratio of 89.

★ The dam records a progeny birth ratio of 99 on eight calves.

★ Recommended for Heifers

76 Tanner Black Arrow 3129

Calved: 01/14/2013

Bull 17599248

Tattoo: 3129

Sitz Upward 307R	Connealy Onward	CWT
Whitestone Black Arrow Z101	Sitz Henrietta Pride 81M	+36
16649387	Koupals B&B Traveler 4062	MARB
Whitestone Evergreen W243	Whitestone Evergreen U170	+31
Whitestone Xception	GAR Precision 1680	REA
Koupals Rica 4107	Toebben Forever Lady 150H	+45
14787739	OCC Glory 950G	FAT
Koupals Rica 299	Beefland Rica 7174	+007

Demand fixed 7/174										+3.007
★ A son of	BEPD		WEPD		YEPD		MILK		BW	\$B
Whitestone	-.7	.37	+49	.29	+87	.28	+28	.13	62	+77.35

Black Arrow Z101 backed by generations of low birth weight genetics with an individual birth ratio of 77.

★ The dam was bred in the Koupal herd and she has a progeny birth ratio of 95 combined with a progeny weaning ratio of 103 on nine calves and progeny IMF and ribeye ratios of 114 and 103, respectively, on five head.

★ Recommended for Heifers

77 Tanner Black Arrow 3209

Calved: 02/02/2013

Bull 17599278

Tattoo: 3209

Sitz Upward 307R	Connealy Onward	CWT
Whitestone Black Arrow Z101	Sitz Henrietta Pride 81M	+38
16649387	Koupals B&B Traveler 4062	MARB
Whitestone Evergreen W243	Whitestone Evergreen U170	+35
GAR Retail Product	GAR Precision 1680	REA
Whitestone BLK Bourbon W036	GAR Ext 4927	+47
#15724973	WCC Special Design L309	FAT
Circle A Black Bourbon 5096	MAF Black Bourbon 0055	+013

★ This bull by Whitestone	MAX Black Bourbon 0000									+0.05
	BEPD		WEPD		YEPD		MILK		BW	\$B
	+3.0	.38	+53	.29	+100	.28	+28	.13	84	+81.08

Black Arrow Z101 records an individual yearling ratio of 108 and an individual ribeye ratio of 108.

★ The dam is a Pathfinder Dam with a progeny weaning ratio of 104 on six calves and a progeny yearling ratio of 107 combined with progeny IMF and ribeye ratios of 100 and 105, respectively, on four head.

78 Tanner Black Arrow 3123 [DDC]

Calved: 01/10/2013

Bull 17614780

Tattoo: 3123

Sitz Upward 307R	Connealy Onward	CWT
Whitestone Black Arrow Z101	Sitz Henrietta Pride 81M	+37
16649387	Koupals B&B Traveler 4062	MARB
Whitestone Evergreen W243	Whitestone Evergreen U170	+50
Whitestone Predestined X056	GAR Predestined	REA
Tanner Queen Kimberly 324Z	Bon View Ganner 85	+25
16691928	BR Midland	FAT
Tanner Queen Kimberly 794	Alberda Queen Kimberly 222	+012

★ One of the top-performing	BEPD		WEPD		YEPD		MILK		BW	\$B
	+5	.36	+64	.27	+101	.26	+27	.12	73	+82.96

bulls of his calf crop with an individual birth ratio of 97 combined with individual weaning and yearling ratios of 123 and 111, respectively, and an individual ribeye ratio of 104.

★ This bull is from the cow family that produced Alberda Traveler 416.

★ Recommended for Heifers



TANNER BLACK ARROW 2623 - Lot 79

79 **Tanner Black Arrow 2623** [DDC] Tattoo: 2623

Whitestone Black Arrow Z101 16649387	Sitz Upward 307R Whitestone Evergreen W243	Connealy Onward Sitz Henrietta Pride 81M Koupals B&B Traveler 4062 Whitestone Evergreen U170	CWT +31 MARB +.70 REA +.34 FAT +.010
Southern Erica 85052 #+16207463	GAR Predestined Southern Erica 308 3965	B/R New Design 036 GAR Ext 4206 BR Midland CA Miss Power Fix 308	

- ★ This son of Whitestone
- Black Arrow Z101 has individual weaning and yearling ratios of 113 and 108, respectively, combined with an individual IMF ratio of 107.
- ★ The Pathfinder Dam of this bull records a progeny weaning ratio of 110 on four calves and a progeny yearling ratio of 102, combined with a progeny IMF ratio of 105 on three head.
- ★ The grandam is a maternal sister to CA Future Direction 5321.

80 **Tanner Black Arrow 3307** Tattoo: 3307

Whitestone Black Arrow Z101 16649387	Sitz Upward 307R Whitestone Evergreen W243	Connealy Onward Sitz Henrietta Pride 81M Koupals B&B Traveler 4062 Whitestone Evergreen U170	CWT +35 MARB +.71 REA +.42 FAT +.023
Mtn Meadow Rita R6084 +15244992	GAR Predestined GAR Precision G242	B/R New Design 036 GAR Ext 4206 GAR Precision 1680 GAR EXT 2537	

- ★ This son of Whitestone Black Arrow Z101 records an individual weaning ratio of 116, from a dam with a progeny weaning ratio of 103 on six calves and a progeny yearling ratio of 102 on four head combined with progeny IMF and ribeye ratios of 112 and 101, respectively, on 11 head.
- ★ Three maternal sisters post a collective progeny weaning ratio of 107 on their first calves.

81 **Tanner Black Arrow 3315** Tattoo: 3315

Whitestone Black Arrow Z101 16649387	Sitz Upward 307R Whitestone Evergreen W243	Connealy Onward Sitz Henrietta Pride 81M Koupals B&B Traveler 4062 Whitestone Evergreen U170	CWT +32 MARB +.75 REA +.42 FAT +.022
Mtn Meadow Rita R6084 +15244992	GAR Predestined GAR Precision G242	B/R New Design 036 GAR Ext 4206 GAR Precision 1680 GAR EXT 2537	

- ★ A member of a successful embryo flush by Whitestone Black Arrow Z101, from a donor dam who records a progeny weaning ratio of 103 on six natural calves and a progeny yearling ratio of 102 on four head along with progeny IMF and ribeye ratios of 112 and 101, respectively, on 11 head.
- ★ This bull has an individual IMF ratio of 113.
- ★ Recommended for Heifers

82 **Tanner Black Arrow 3308** Tattoo: 3308

Whitestone Black Arrow Z101 16649387	Sitz Upward 307R Whitestone Evergreen W243	Connealy Onward Sitz Henrietta Pride 81M Koupals B&B Traveler 4062 Whitestone Evergreen U170	CWT +39 MARB +.74 REA +.64 FAT +.028
Mtn Meadow Rita R6084 +15244992	GAR Predestined GAR Precision G242	B/R New Design 036 GAR Ext 4206 GAR Precision 1680 GAR EXT 2537	

- ★ One of five flush brothers who sell by Whitestone Black Arrow Z101.
- ★ This bull has individual weaning and yearling ratios of 114 and 107, respectively, combined with individual IMF and ribeye ratios of 111 and 119, respectively, from a top-producing dam.
- ★ Three maternal sisters post a collective progeny weaning ratio of 107.
- ★ Recommended for Heifers

83 **Tanner Black Arrow 3321** Tattoo: 3321

Whitestone Black Arrow Z101 16649387	Sitz Upward 307R Whitestone Evergreen W243	Connealy Onward Sitz Henrietta Pride 81M Koupals B&B Traveler 4062 Whitestone Evergreen U170	CWT +35 MARB +.75 REA +.45 FAT +.019
Mtn Meadow Rita R6084 +15244992	GAR Predestined GAR Precision G242	B/R New Design 036 GAR Ext 4206 GAR Precision 1680 GAR EXT 2537	

- ★ This bull records an individual weaning ratio of 113 and an individual yearling ratio of 108, from an embryo flush by Whitestone Black Arrow Z101, and produced from a top-indexing dam.
- ★ Three maternal sisters post a collective progeny weaning ratio of 107.
- ★ Recommended for Heifers

84 **Tanner Black Arrow 3325** Tattoo: 3325

Whitestone Black Arrow Z101 16649387	Sitz Upward 307R Whitestone Evergreen W243	Connealy Onward Sitz Henrietta Pride 81M Koupals B&B Traveler 4062 Whitestone Evergreen U170	CWT +38 MARB +.75 REA +.48 FAT +.021
Mtn Meadow Rita R6084 +15244992	GAR Predestined GAR Precision G242	B/R New Design 036 GAR Ext 4206 GAR Precision 1680 GAR EXT 2537	

- ★ A flush brother to Lots 80 through 83 by Whitestone Black Arrow Z101.
- ★ This bull has individual weaning and yearling ratios of 106 combined with individual IMF and ribeye ratios of 114 and 104, respectively, from a dam who records a progeny weaning ratio of 103 on six natural calves and a progeny yearling ratio of 102 on four head combined with progeny IMF and ribeye ratios of 112 and 101, respectively, on 11 head.

85 **Tanner Black Arrow 3142** [DDF] Tattoo: 3142

Whitestone Black Arrow Z101 16649387	Sitz Upward 307R Whitestone Evergreen W243	Connealy Onward Sitz Henrietta Pride 81M Koupals B&B Traveler 4062 Whitestone Evergreen U170	CWT +32 MARB +.45 REA +.62 FAT +.008
Tanner Rita X117 +16047798	Rito 2 878 of 2536 BVND 878 Boyd 1300 Rita 5002	Bon View New Design 878 GAR Precision 2536 ISU Imaging Q 8242 GAR New Design 1300	

- ★ This bull combines an individual birth ratio of 96 with an individual weaning ratio of 107 and an individual ribeye ratio of 106.
- ★ This bull combines the herd sire producing Rita and Evergreen families.
- ★ Recommended for Heifers

86 Tanner Thunderbird 3324

Calved: 03/08/2013

Bull 17599321

Tattoo: 3324

Sitz Upward 307R
Whitestone Thunderbird Z103
16649389 Whitestone BLK Bourbon W036

Connealy Onward
Sitz Henrietta Pride 81M
GAR Retail Product
Circle A Black Bourbon 5096

CWT
+50
MARB
+.67
REA
+.63
FAT
+.022
\$B

SAV Iron Mountain 8066

Tanner Pride A227

17030008 Tanner Pride T606

TC Gridiron 258
SAV Madame Pride 3249
B/R New Frontier 095
Whitestone Pride R190

★ A son of the
Tanner featured

BEPD		WEPD		YEPD		MILK		BW	\$B
+2.4	.35	+58	.25	+106	.24	+26	.13	75	+101.40

sire, Whitestone Thunderbird Z103, with an individual yearling ratio of 104 and individual IMF and ribeye ratios of 109 and 104, respectively.

★ This bull is a grandson of the proven sires, Sitz Upward 307R and SAV Iron Mountain 8066.



SAV NET WORTH 4200 - Featuring his sons and grandsons.

87 Tanner Thunderbird 3281

Calved: 02/23/2013

Bull 17578657

Tattoo: 3281

Sitz Upward 307R
Whitestone Thunderbird Z103
16649389 Whitestone BLK Bourbon W036

Connealy Onward
Sitz Henrietta Pride 81M
GAR Retail Product
Circle A Black Bourbon 5096

CWT
+48
MARB
+1.29
REA
+1.58
FAT
+1.004
\$B

SAV 707 Rito 9182

Tanner Lass A167

16980359 Tanner Lass Y529

Rito 707 of Ideal 3407 7075
SAV Primrose 4281
Whitestone Satisfaction
Tanner Lass 819

★ A grandson
of the high-

BEPD		WEPD		YEPD		MILK		BW	\$B
+3.4	.34	+58	.23	+104	.16	+30	.11	73	+87.21

performance sires, Sitz Upward 307R and SAV 707 Rito 9182.

★ The dam has a progeny weaning ratio of 102 on two calves.

88 Tanner Thunderbird 3228

Calved: 02/09/2013

Bull 17578651

Tattoo: 3228

Sitz Upward 307R
Whitestone Thunderbird Z103
16649389 Whitestone BLK Bourbon W036

Connealy Onward
Sitz Henrietta Pride 81M
GAR Retail Product
Circle A Black Bourbon 5096

CWT
+41
MARB
+.56
REA
+.44
FAT
+.019
\$B

E&B Predestined 7116

Tanner Zara A313

17031662 Koupals Zara 370

GAR Predestined
E&B Lady Precision 310
OCC Glory 950G
Beefland Zara 729

★ This grandson
of Sitz Upward

BEPD		WEPD		YEPD		MILK		BW	\$B
+9	.34	+50	.24	+85	.23	+27	.12	58	+88.77

307R has an individual IMF ratio of 108.

★ The granddam was bred in the Koupal herd.

★ Recommended for Heifers

89 Tanner Heavy Hitter 2927

Calved: 12/18/2012

Bull 17616624

Tattoo: 2927

SAV 8180 Traveler 004
SAV Heavy Hitter 6347
15369298 SAV Bessie Heiress 1184

Sitz Traveler 8180
Boyd Forever Lady 8003
SAF 598 Bando 5175
SAV Bessie Heiress 8067

CWT
+36
MARB
+.37
REA
+.33
FAT
+.020
\$B

Koupals B&B Balancer 709

Tanner Blkld Progress 9066

16419333 B&B Blkld Progress 7119

Koupals B&B Balancer 4017
B&B Gammer 5020
SAV 5175 Bando 4597
Koupal Blkld Progress 5015

★ This son of
SAV Heavy

BEPD		WEPD		YEPD		MILK		BW	\$B
+6	.36	+47	.27	+88	.27	+20	.18	71	+76.45

Hitter 6347 combines an individual birth ratio of 92 with individual weaning and yearling ratios of 103 and 112, respectively, and an individual ribeye ratio of 107.

★ The dam has a progeny ribeye ratio of 110 on two head and a progeny yearling ratio of 111 on two head.

★ Recommended for Heifers

90 Tanner Net Worth 3229

Calved: 02/10/2013

Bull 17616582

Tattoo: 3229

SAV 8180 Traveler 004
SAV Net Worth 4200
#14739204 SAV May 2410

Sitz Traveler 8180
Boyd Forever Lady 8003
SAF 598 Bando 5175
SAV May 6269

CWT
+35
MARB
+.55
REA
+.44
FAT
+.016
\$B

SAV Final Answer 0035

Tanner Skymere Y441

16322121 Tanner Skymere 776

Sitz Traveler 8180
SAV Emulous 8145
B/R New Frontier 095
Skymere P042 of Whitestone

★ This son of the

Skyline 1642 of Whitesboro								7.010	
BEPD		WEPD		YEPD		MILK		BW	\$B
+2.1	.37	+56	.29	+91	.28	+23	.22	83	+84.54

Pathfinder Sire, SAV Net Worth 4200, records an individual weaning ratio of 108, from a dam by the Pathfinder Sire, SAV Final Answer 0035.

★ The dam of this bull records a progeny weaning ratio of 104 on three calves.

★ Recommended for Heifers

91 Tanner New Worth 3303

Calved: 02/28/2013

Bull 17616602

Tattoo: 3303

SAV 8180 Traveler 004
SAV Net Worth 4200
#14739204 SAV May 2410

Sitz Traveler 8180
Boyd Forever Lady 8003
SAF 598 Bando 5175
SAV May 6269

CWT
+31
MARB
+.53
REA
+.38
FAT
+.026
\$B

Summitcrest High Prime 0H29

WCS Petunia C34 0H29 218

+14726239 JF Petunia 218

Gardens Prime Time
Summitcrest Missie 2F55
TC Dividend 963
JF Petunia 413

★ A son of the

31 February 419								7.020	
BEPD		WEPD		YEPD		MILK	BW	\$B	
+3.3	.38	+48	.29	+83	.28	+25	.23	87	+78.39

Genex/CRI Pathfinder Sire, SAV Net Worth 4200, with individual weaning and yearling ratios of 102.

★ Seven maternal sisters post a collective progeny weaning ratio of 102.

92 Tanner Net Worth 3269

Calved: 02/20/2013

Bull 17616585

Tattoo: 3269

SAV 8180 Traveler 004
SAV Net Worth 4200
#14739204 SAV May 2410

Sitz Traveler 8180
Boyd Forever Lady 8003
SAF 598 Bando 5175
SAV May 6269

CWT
+21
MARB
+.61
REA
+.30
FAT
+.025
\$B

Koupals Mo Co 253

Robbins Harmony Mia 7080

16012745 BAX Harmony Mia 154-422

OCC Juneau 807J
Beefland Ebonette 835
OCC Homer 650H
BAX Mia Annabelle 422-137

★ This son of the

BEPD								WEPD		YEPD		MILK		BW	\$B		
-5		.38		+36		.29		+73		.28		+23		.22		60	+69.71

Pathfinder Sire, SAV Net Worth 4200, has an individual IMF ratio of 125 along with a modest individual birth ratio of 74.

★ The dam is a granddaughter of the Pathfinder Sires, OCC Juneau 807J and OCC Homer 650H.

★ Recommended for Heifers

TANNER ANGUS BULLS



TANNER SIERRA CUT Z268 - Lot 93

SUMMITCREST PRIMROSE 2J02
The grandam of Lot 93.



93 Tanner Sierra Cut Z268

Calved: 09/19/2012

Bull 17434448

Tattoo: Z268

GAR Retail Product

DR Sierra Cut 7404

+16047469 DR Dobra 3453

GAR Precision 1680

GAR Ext 4927

Bon View New Design 208

DR Dobra 1223

CA Future Direction 5321

La Terre Primrose 374N

+14568288 Summitcrest Primrose 2J02

GAR Precision 1680

CA Miss Power Fix 308

Summitcrest Scotch Cap 0B45

Summitcrest Primrose 0G84

CWT
+17
MARB
+.78
REA
+.66
FAT
+.004
\$B
+76.87

★ A moderate birth bull by the

Genex/CRI sire, DR Sierra Cut 7404, from a dam who records a progeny weaning ratio of 101 on six calves and a progeny yearling ratio of 102 on four head along with progeny IMF and ribeye ratios of 107 and 103, respectively, on 34 head.

★ Eight maternal sisters post a collective progeny weaning ratio of 105.

★ Recommended for Heifers



TANNER SIERRA CUT Z288 - Lot 95

94 Tanner Sierra Cut Z302

Calved: 10/02/2012

Bull 17558645

Tattoo: Z302

GAR Retail Product

DR Sierra Cut 7404

+16047469 DR Dobra 3453

GAR Precision 1680

GAR Ext 4927

Bon View New Design 208

DR Dobra 1223

EXAR New Look 2971

Southern Rita 4942 6425

15595955 Southern 827 Traveler 4942

Bon View New Design 1407

N Bar Primrose 2424

KCF Bennett Coalition SCC

GAR 6807 Traveler 827

CWT
+26
MARB
+.70
REA
+.65
FAT
-.023
\$B
+88.49

★ This high-indexing son

BEPD	WEPD	YEPD	MILK	BW	\$B
+1.4	.23	+59	.27	+107	.27
+29	.19				

of the Genex/CRI sire, DR Sierra Cut 7404, has individual weaning and yearling ratios of 112 and 109, respectively, along with individual IMF and ribeye ratios of 114 and 106, respectively.

★ The dam combines a progeny birth ratio of 73 with progeny weaning and yearling ratios of 115 and 113, respectively, on two calves.

★ Recommended for Heifers

95 Tanner Sierra Cut Z288

Calved: 09/26/2012

Bull 17434446

Tattoo: Z288

GAR Retail Product

DR Sierra Cut 7404

+16047469 DR Dobra 3453

GAR Precision 1680

GAR Ext 4927

Bon View New Design 208

DR Dobra 1223

Rito 2K6 of 2536 Rito 3X25

CCC561

14941768

CCC Rita 242 of ND 1407 8FB1

Rito 3X25 of 5H11 EXT

GAR Precision 2536

Bon View New Design 1407

Rita 8FB1 of 3X24 Fullback

CWT
+21
MARB
+.67
REA
+.55
FAT
-.023
\$B
+81.03

★ This son of DR Sierra Cut 7404

BEPD	WEPD	YEPD	MILK	BW	\$B
+2.9	.36	+49	.27	+99	.27
+29	.19				

is from a dam with a progeny weaning ratio of 106 and a progeny yearling ratio of 107 on four calves.

TANNER ANGUS BULLS



TANNER SIERRA CUT Z270 - Lot 96



TANNER TITAN Z411 - Lot 98

96

Tanner Sierra Cut Z270

Calved: 09/20/2012

Bull 17434443

Tattoo: Z270

GAR Retail Product
DR Sierra Cut 7404
+16047469 DR Dobra 3453

GAR Precision 1680
GAR Ext 4927
Bon View New Design 208
DR Dobra 1223

CWT
+15
MARB
+.70
REA
+.46
FAT
-1.007
\$B

BR Midland
RAY Blackbird 6095
+15592284 ACF Blackbird 0298

Twin Valley Precision E161
BR Royal Lass 7036-19
B/R New Design 036
Davis Yr Blackbird 558H

- ★ A promising son of the Genex/CRI sire, DR Sierra Cut 7404, backed by generations of moderate birth weight genetics.
- ★ This bull has an individual birth ratio of 81 from a dam with a progeny birth ratio of 92 on four calves.
- ★ Recommended for Heifers

BEPD		WEPD		YEPD		MILK		BW	\$B
-8	.36	+50	.28	+92	.28	+18	.20	65	+71.37

97

Tanner Titan Z409

Calved: 12/02/2012

Bull 17438859

Tattoo: Z409

B/R 65R Genesis
Spring Cove Titan 8319
16187239 Spring Cove Blossom 319

CA Future Direction 5321
B/R Blackcap Empress 127
VDAR Bando 97
Spring Cove Blossom 6148 804

CWT
+20
MARB
+1.85
REA
+1.26
FAT
+1.014
\$B

B/R New Frontier 095
Whitestone Erica Eileen 498R
+14947612 TC Erica Eileen 6045

B/R New Design 036
White Fence Pride H1
GAR Sleep Easy 1009
TC Erica Eileen 0130

- ★ A son of Spring Cove Titan 8319 from a dam with a progeny birth ratio of 97 combined with a progeny weaning ratio of 101 on two calves and progeny IMF and ribeye ratios of 103 and 100, respectively, on eight head.
- ★ Two maternal sisters post a collective progeny weaning ratio of 102.
- ★ Recommended for Heifers

BEPD		WEPD		YEPD		MILK		BW	\$B
I+1.3	.05	I+43	.05	I+75	.05	I+33	.05	83	+75.89



TANNER TITAN Z409 - Lot 97

98

Tanner Titan Z411

Calved: 12/03/2012

Bull 17438861

Tattoo: Z411

B/R 65R Genesis
Spring Cove Titan 8319
16187239 Spring Cove Blossom 319

CA Future Direction 5321
B/R Blackcap Empress 127
VDAR Bando 97
Spring Cove Blossom 6148 804

CWT
+21
MARB
+.64
REA
+.26
FAT
+.033
\$B

SAV 8180 Traveler 004
Wms 7L Miss Wix 46
+15416412 Homestretch Miss Wix 299

Sitz Traveler 8180
Boyd Forever Lady 8003
Traveler 124 GDAR
Miss Wix 365 of Mc Cumber

- ★ This son of Spring Cove Titan 8319 is from a royally-bred dam backed by the Pathfinder Sires, SAV 8180 Traveler 004 and Traveler 124 GDAR.
- ★ The third dam is the legendary Pathfinder Dam, Miss Wix 365 of McCumber.

BEPD		WEPD		YEPD		MILK		BW	\$B
+2.6	.35	+40	.27	+78	.25	+27	.16	87	+69.50

99

Tanner Titan Z407

Calved: 12/01/2012

Bull 17438862

Tattoo: Z407

B/R 65R Genesis
Spring Cove Titan 8319
16187239 Spring Cove Blossom 319

CA Future Direction 5321
B/R Blackcap Empress 127
VDAR Bando 97
Spring Cove Blossom 6148 804

CWT
+23
MARB
+.92
REA
+.45
FAT
+.008
\$B

GAR Integrity
Bohi Pride 6279
15711413 Boyd Pride 3047

Bon View New Design 1407
GAR Precision 1019
B/R New Frontier 095
TC Pride 7023

- ★ A uniquely-bred herd sire prospect with an individual IMF ratio of 111 and an individual ribeye ratio of 105.
- ★ The dam records progeny IMF and ribeye ratios of 126 and 102, respectively, on two calves.

BEPD		WEPD		YEPD		MILK		BW	\$B
+3.3	.36	+39	.27	+74	.25	+27	.15	89	+83.79



TANNER TITAN Z407 - Lot 99

TANNER ANGUS BULLS



TANNER CONVERSION 216 - Lot 102

102 Tanner Conversion 216 [DDC]

Calved: 10/05/2012

Bull 17327259

Tattoo: 216

Silveiras Conversion 8064

16262077 EXG Saras Dream S609 R3

CA Future Direction 5321

BT Royal Pride 237G

BR Midland

Exar Saras Dream 9809

SQ Credence 67S

Harvey Tiffany 0510

+16730390 Three Trees Tiffany 1942

SS Objective T510 0T26

Rita 3540 of 021 Rito 111

B/R New Design 036

B/R Ruby of Tiffany 155

CWT
+26
MARB
+89
REA
+96
FAT
-.036

- ★ A paternal brother to the

BEPD	WEPD	YEPP	MILK	BW	\$B
+3.9	.35	+66	.27	+109	.27
+24	.16	86			+97.57

top-selling bull of the 2014 Tanner Spring Sale.

- ★ This bull has individual weaning and yearling ratios of 119 and 108, respectively, along with individual IMF and ribeye ratios of 102 and 116, respectively.

103 Tanner Hoover Dam Z376

Calved: 11/15/2012

Bull 17428589

Tattoo: Z376

Hoover Dam

16124994 Erica of Ellston C124

SydGen CC&7

SAF Connection

SydGen Forever Lady 4087

TC Gridiron 258

Erica of Ellston V65

N Bar Emulation EXT

Emulation N Bar 5522

BoBo Primrose 0502

+16815112 Exar Primrose 1428 PF

N Bar Primrose 2424

Schurrtop Supreme

N Bar Primrose 2424

CWT
+28
MARB
+61
REA
+54
FAT
+0

- ★ A son of the

BEPD	WEPD	YEPP	MILK	BW	\$B
-.4	.36	+44	.28	+77	.29
+24	.22	62			+82.55

proven sire, Hoover Dam, from a dam who is a double granddaughter of the legendary N Bar Primrose 2424, by the time-tested Pathfinder Sire, N Bar Emulation EXT.

- ★ Recommended for Heifers

104 Tanner Hoover Dam 211

Calved: 09/24/2012

Bull 17322867

Tattoo: 211

Hoover Dam

16124994 Erica of Ellston C124

SydGen CC&7

SAF Connection

SydGen Forever Lady 4087

TC Gridiron 258

Erica of Ellston V65

SQ Credence 67S

SS Objective T510 0T26

Harvey Blackcap 500

16958202 WCLC Southern Blackcap 75129

Rita 3540 of 021 Rito 111

GAR Predestined

Rita 1194 of 2536 Rito 616

CWT
+15
MARB
+86
REA
+74
FAT
-.049

- ★ This calving-ease prospect by

BEPD	WEPD	YEPP	MILK	BW	\$B
+9	.35	+60	.27	+98	.28
+30	.21	72			+81.74

Hoover Dam has an individual birth ratio of 98 combined with individual weaning and yearling ratios of 110 and 102, respectively, and an individual IMF ratio of 103.

- ★ This bull is from the family that traces to the breeds world record income-producing cow.

- ★ Recommended for Heifers

100 Tanner Titan Z408

Calved: 12/01/2012

Bull 17438864

Tattoo: Z408

Spring Cove Titan 8319

16187239 Spring Cove Blossom 319

B/R 65R Genesis

CA Future Direction 5321

B/R Blackcap Empress 127

VDAR Bando 97

Spring Cove Blossom 6148 804

GAR Predestined

B/R New Design 036

GAR Ext 4206

Pine Creek Traveler 124-1107

Jacs Adia Burgess 5326 7761

LHA Rita 7P1 of 1425 Pred

+16040757 Jacs Adia Burgess 1425

CWT
+24
MARB
+99
REA
+10
FAT
+.038

- ★ This son of Spring Cove

BEPD	WEPD	YEPP	MILK	BW	\$B
+3.4	.34	+44	.26	+79	.24
+33	.15	85			+78.41

Titan 8319 has an individual IMF ratio of 109.

- ★ This bull is from the noted Miss Burgess family.

101 Tanner Titan Z401

Calved: 11/29/2012

Bull 17438863

Tattoo: Z401

Spring Cove Titan 8319

16187239 Spring Cove Blossom 319

B/R 65R Genesis

CA Future Direction 5321

B/R Blackcap Empress 127

VDAR Bando 97

Spring Cove Blossom 6148 804

Riverbend Mile High 3718

Bon View New Design 1407

GAR Precision 1919

SVF Gdar 216 LTD

Davis Polly 8506

7-L 3718 Polly 5744

15743301 Kahn Polly B182

CWT
+28
MARB
+73
REA
+.50
FAT
-.008

- ★ This son of Spring Cove

BEPD	WEPD	YEPP	MILK	BW	\$B
+4.4	.36	+40	.27	+85	.25
+30	.16	89			+86.97

Titan 8319 has an individual yearling ratio of 101.

- ★ This bull is from the noted Polly family.



TANNER TITAN Z401 - Lot 101



TANNER HOOVER DAM 211 - Lot 104

105 Tanner Windy Z358

Calved: 11/05/2012

Bull 17428619

Tattoo: Z358

Apex Windy 078

16237970

HARB Windy 702 JH

Apexette Lucy 6037

AAR Really Windy 1205

HARB Black Lady 073 JH

Apex Min Front 044

Apexette Lucy 1064

N Bar Emulation EXT

Emulation N Bar 5522

Lone Oaks Blackcap 8210

+16579005

Kahn Blackcap M174

N Bar Primrose 2424

B/R New Design 323

GAR Precision 706

CWT
+31
MARB
+37
REA
+15
FAT
+021

- ★ This son of the Accelerated

BEPD	WEPD	YEPP	MILK	BW	\$B
+2.7	.35	+56	.27	+98	.27
+29	.18	82			+70.45

Genetics outcross sire, Apex Windy 078, has individual weaning and yearling ratios of 102 and 110, respectively.

- ★ The dam is by the time-tested Pathfinder Sire, N Bar Emulation EXT, from a high income-producing family.



APEX WINDY 078 - Featuring his sons.

106 Tanner Consensus 3241

Calved: 02/13/2013

Bull 17616743

Tattoo: 3241

EXAR Significant 1769B

+16884386

Connealy Consensus 7229

Sitz Henrietta Pride 643T

Connealy Consensus

Blue Lilly of Conanga 16

Connealy Onward

Sitz Henrietta Pride 81M

GAR Predestined

B/R New Design 036

Werner Queen Blackcap 3048

+16334725

Boyd Queen Blackcap 5017

GAR Ext 4206

Rito 112 of 2536 Rito 616

GAR New Design 1200

CWT
+42
MARB
+92
REA
+67
FAT
-003

- ★ This bull records individual

BEPD	WEPD	YEPP	MILK	BW	\$B
+4.2	.36	+61	.27	+101	.26
+31	.14	90			+105.40

weaning and yearling ratios of 114 and 109, respectively, along with individual IMF and ribeye ratios of 119 and 102, respectively.

- ★ This bull is from a top income-producing family.

109 Tanner Iron Mountain 325

Calved: 02/22/2013

Bull 17577655

Tattoo: 325

SAV Iron Mountain 8066

16115617

TC Gridiron 258

SAV Madame Pride 3249

GAR Grid Maker

TC Blackbird 7049

SAV 8180 Traveler 004

SAV Madame Pride 8264

GAR Predestined

B/R New Design 036

JLM Blackcap 6973

+16082602

A Plus Blackcap 1179

GAR Ext 4206

GAR Precision 1680

A Plus Blackcap 8102

CWT
+31
MARB
+87
REA
+43
FAT
+031

- ★ A son of the Accelerated

BEPD	WEPD	YEPP	MILK	BW	\$B
+3.4	.05	+50	.05	+91	.05
+14	.05	80			+88.59

Genetics proven sire, SAV Iron Mountain 8066.

- ★ This bull is from a dam with progeny IMF and ribeye ratios of 108 and 101, respectively, on seven calves, stemming from a third dam who was a feature of the first 7L sale.

107 Tanner Rito 3368

Calved: 03/28/2013

Bull 17599360

Tattoo: 3368

SAV 707 Rito 9182

16396542

Rito 707 of Ideal 3407 7075

SAV Primrose 4281

RR Rito 707

Ideal 3407 of 1418 076

Boyd New Day 8005

SAV Primrose Mistress 1170

Woodhill Foresight

Papa Forte 1921

RAY Blackcap 6394

+15592545

GAR 616 Rito 1131

Bon View Gammer 85

Rito 616 of 4B20 6807

GAR Precision 706

CWT
+36
MARB
+25
REA
+46
FAT
-019

- ★ A son of the high-

BEPD	WEPD	YEPP	MILK	BW	\$B
+2.3	.34	+55	.24	+98	.24
+25	.13	78			+77.62

performance sire, SAV 707 Rito 9182, with an individual birth ratio of 96 combined with individual weaning and yearling ratios of 102 and 104, respectively, and individual IMF and ribeye ratios of 107 and 103, respectively.

- ★ The dam has a progeny weaning ratio of 101 on five calves.

110 Tanner Iron Mountain 329

Calved: 02/16/2013

Bull 17577659

Tattoo: 329

SAV Iron Mountain 8066

16115617

TC Gridiron 258

SAV Madame Pride 3249

GAR Grid Maker

TC Blackbird 7049

SAV 8180 Traveler 004

SAV Madame Pride 8264

GAR Predestined

B/R New Design 036

JLM Blackcap 6973

+16082602

A Plus Blackcap 1179

GAR Ext 4206

GAR Precision 1680

A Plus Blackcap 8102

CWT
+30
MARB
+93
REA
+47
FAT
+024

- ★ A flush brother to the previous

BEPD	WEPD	YEPP	MILK	BW	\$B
+3.4	.05	+50	.05	+91	.05
+14	.05	85			+90.15

bull, blending the herd sire producing Blackcap and Madame Pride families.

- ★ This bull has individual IMF and ribeye ratios of 109 and 103, respectively, from a dam with progeny IMF and ribeye ratios of 108 and 101, respectively, on seven head.

108 Tanner Respondent 3221

Calved: 02/06/2013

Bull 17599283

Tattoo: 3221

SAV Respondent 1130

17016466

SAV 707 Rito 9969

SAV Abigale 5646

Rito 707 of Ideal 3407 7075

BR Polly 8077-472

SAF 598 Bando 5175

SAV Abigale 6062

SAV Final Answer 0035

Sitz Traveler 8180

Tanner Jestress 625Y

16599738

Tanner Jestress 821

SAV Emulous 8145

Whitstone Traveler 5158

Tanner Jestress 284

CWT
+29
MARB
+32
REA
+11
FAT
-015

- ★ The sire of this bull is a full

BEPD	WEPD	YEPP	MILK	BW	\$B
+3.4	.33	+46	.21	+90	.20
+21	.11	85			+69.91

brother to the Peak Dot herd sire, SAV Eliminator 9105.

- ★ The dam of this bull is by the Pathfinder Sire, SAV Final Answer 0035.

111 Tanner Iron Mountain 3145

Calved: 01/23/2013

Bull 17616682

Tattoo: 3145

SAV Iron Mountain 8066

16115617

TC Gridiron 258

SAV Madame Pride 3249

GAR Grid Maker

TC Blackbird 7049

SAV 8180 Traveler 004

SAV Madame Pride 8264

Whitstone Right Time P014

Leachman Right Time

B7B Blkdb Progress 5081

15107464

B&B Blkdb Progress 8015

Whitstone Rito 390M

RR 9440 Scotch Cap 1483

Beefland Blkdb Progress 3015

CWT
+29
MARB
+36
REA
+19
FAT
+012

- ★ A son of the proven

BEPD	WEPD	YEPP	MILK	BW	\$B
+3.3	.38	+43	.28	+85	.28
+16	.21	83			+69.08

Accelerated Genetics proven sire, SAV Iron Mountain 8066.

- ★ This bull has an individual ribeye ratio of 102.

TANNER ANGUS BULLS



TANNER 6807 TRAVELER 2835 - Lot 112

SANDPOINT BLACK EMPRESS 7912

The dam of Lot 112.



112 Tanner 6807 Traveler 2835

Calved: 11/20/2012

Bull 17564199

Tattoo: 2835

DHD Traveler 6807
#10858958 Bemindful Maid DHD 0807

Sandpoint Black Empress 7912
+16016529 Ideal 029 OF F506 8603

Band 234 of Ideal 3163
QAS Blackbird Eve 601 1
PBC 707 1M F0203
Bemindful Maid of RR 1079
DHD Traveler 6807
Dixie Erica of CH 1019
N Bar Prime Time D806
Ideal 8603 of 6159 327

CWT
+11
MARB
+21
REA
+46
FAT
+008

- ★ A son of the legendary

Pathfinder Sire, DHD Traveler 6807, with a pedigree tracing to him twice.

- ★ The donor dam of this bull is by the Pathfinder Sire, OCC Emblazon 854E, and the grandam was bred in the Jorgensen herd.

- ★ Recommended for Heifers

BEPD		WEPD		YEPD		MILK		BW	\$B
I+.1	.05	I+38	.05	I+68	.05	I+20	.05	76	+45.02



WULFFS ERICA DIANNA 6410 - The dam of Lot 113.

113 Tanner Emblazon 3104

Calved: 01/01/2013

Bull 17564215

Tattoo: 3104

OCC Emblazon 854E
#12514348 Dixie Erica of CH 1019

Wulffs Erica Dianna 6410
+13087609 Wulffs Erica Dianna C116

QAS Traveler 23-4
Bemindful Maid DHD 0807
PBC 707 1M F0203
Dixie Erica of CH 615
Emulation N Bar 5522
N Bar Primrose 2424
Tehama Bando 155
Wulffs Erica Dianna A308

CWT
+15
MARB
+20
REA
+60
FAT
+006

- ★ A blending of the Pathfinder

Sires, OCC Emblazon 854E and N Bar Emulation EXT, recording individual IMF and ribeye ratios of 105 and 107, respectively.

- ★ The dam is a full sister to Wulffs EXT 6106.

- ★ Recommended for Heifers

BEPD		WEPD		YEPD		MILK		BW	\$B
- .9	.39	+41	.32	+73	.31	+13	.26	65	+51.74

114 Tanner Jetset 3271

Calved: 02/21/2013

Bull 17616658

Tattoo: 3271

Duff Jetset 7122
+15944145 OCC Revolution Rose 887H

Whitestone Kimberly W142
15723934 Whitestone Kimberly 641T

OCC Emblazon 854E
OCC Juanada 968G
Rito 9Q4 of 1H1 Sasquatch
OCC Revolution Rose 919E
GAR Precision 1680
Toebben Forever Lady 150H
JLB Exacto 416
Alberda Queen Kimberly 222

CWT
+31
MARB
+20
REA
+85
FAT
+030

- ★ This son of the Accelerated

Genetics sire, Duff Jetset 7122, has an individual birth ratio of 94 combined with individual weaning and yearling ratios of 110 and 108, respectively, and individual IMF and ribeye ratios of 101 and 124, respectively.

- ★ The dam records progeny weaning and yearling ratios of 112 and 104, respectively, combined with individual IMF and ribeye ratios of 101 and 118, respectively, on three calves.

- ★ Recommended for Heifers

BEPD		WEPD		YEPD		MILK		BW	\$B
+9	.36	+51	.27	+83	.26	+25	.15	76	+69.85

115 Tanner Jetset 2602

Calved: 09/07/2012

Bull 17534283

Tattoo: 2602

OCC Jet Stream 825J
Duff Jetset 7122
+15944145 OCC Revolution Rose 887H

OCC Emblazon 854E
OCC Juanada 968G
Rito 9Q4 of 1H1 Sasquatch
OCC Revolution Rose 919E

CWT
+22
MARB
+33
REA
+76
FAT
+031

SAV Bismarck 5682

GAR Grid Maker
SAV Abigale 0451
Twin Valley Precision E161
Thomas Juana Erica 9101

Tanner Juana Erica Y500
16335119 Thomas Juana Erica 3043

- ★ This bull blends the Accelerated Genetics sire, Duff Jetset 7122, with the Genex/CRI sire, SAV Bismarck 5682.
- ★ This bull has individual weaning and yearling ratios of 102 and 107, respectively, combined with individual IMF and ribeye ratios of 104 and 101, respectively.
- ★ Recommended for Heifers



TANNER JETSET 2602 - Lot 115

116 Tanner Jetset 2747

Calved: 10/25/2012

Bull 17562819

Tattoo: 2747

OCC Jet Stream 825J
Duff Jetset 7122
+15944145 OCC Revolution Rose 887H

OCC Emblazon 854E
OCC Juanada 968G
Rito 9Q4 of 1H1 Sasquatch
OCC Revolution Rose 919E

CWT
+14
MARB
+20
REA
+56
FAT
+0

BCC New Design 036 2156-149

B/R New Design 036
GAR 6807 Traveler 2156
E&B 1483 Scotchman 543
Beeftand Prospector PRIDE307

B&B Prospector Pride 5090
#15111578 B&B Prospector Pride 807

- ★ A son of the Accelerated Genetics sire, Duff Jetset 7122, from a Pathfinder Dam with progeny IMF and ribeye ratios of 101 and 104, respectively, on four calves.
- ★ The third dam is also a Pathfinder Dam.
- ★ Recommended for Heifers

118 Tanner Encore Z390

Calved: 11/23/2012

Bull 17428734

Tattoo: Z390

Duff Encore 702
Peak Dot Encore 502W
16912746 Annie K of Peak Dot 806T

DHD Traveler 6807
OCC Dixie Erica 814G
SAV 004 Predominant 4438
Double AA Annie K 203'01

CWT
+26
MARB
+47
REA
+43
FAT
+009

Brooks Ext 792

Ray Rita 3236
+14628862 Ray Rita 1056-826

N Bar Emulation EXT
Princess 4103 BCBR
Schoenes Fix It 826
GAR Pierre 1322

- ★ This high-performing bull has individual weaning and yearling ratios of 118 and 115, respectively, along with individual IMF and ribeye ratios of 101 and 109, respectively.
- ★ The sire was bred in the Peak Dot herd in Canada.

117 Tanner Jetset 2702

Calved: 10/01/2012

Bull 17534291

Tattoo: 2702

OCC Jet Stream 825J
Duff Jetset 7122
+15944145 OCC Revolution Rose 887H

OCC Emblazon 854E
OCC Juanada 968G
Rito 9Q4 of 1H1 Sasquatch
OCC Revolution Rose 919E

CWT
+25
MARB
+39
REA
+51
FAT
+008

B/R New Frontier 095

B/R New Design 036
White Fence Pride H1
Rito 8E8 of 5H11 Traveler
LB Joanie HP 9614

Tanner Joanie X323
+16284362 MB Joanie 8E8 1627

- ★ This bull records individual IMF and ribeye ratios of 104 and 103, respectively, and an individual ribeye ratio of 106, from a dam with a progeny weaning ratio of 105 on three calves, combined with a progeny yearling ratio of 109 and a progeny ribeye ratio of 107 on two calves.
- ★ The dam is maternal sister to the ABS Global sire, Plowman 1627 of Millbrae SAR, stemming from the Pathfinder Dam, MB Joanie 8E8 1627.



TANNER JETSET 2702 - Lot 117

119 Tanner Top Link Z340

Calved: 10/28/2012

Bull 17414387

Tattoo: Z340

OCC Missing Link 830M
Gibbs 8049u An Top Link
+16525763 Jauer Doctor 7020 35

OCC Headliner 661H
OCC Dixie Erica 946K
OCC Doctor 940D
Jauer 6807 Traveler 35 1032

CWT
+26
MARB
+12
REA
+89
FAT
+041

Connealy Forward

7L Lady Dot X539
+16838531 Lady of Peak Dot 387J

Connealy Onward
Becky Lee of Conanga 74
Double AA Bardolier 3'97
Lady of Peak Dot 248X

- ★ A grandson of the noted 7L donor, Lady of Peak Dot 387J.
- ★ This bull has an individual birth ratio of 94 combined with individual weaning and yearling ratios of 105 and 112, respectively, and an individual ribeye ratio of 118.
- ★ Recommended for Heifers



TANNER ENCORE Z390 - Lot 118

TANNER ANGUS BULLS



TANNER TOP LINK Z324 - Lot 120



TANNER TOP LINK Z394 - Lot 122

120 Tanner Top Link Z324

Calved: 10/11/2012

Bull 17414397

Tattoo: Z324

OCC Missing Link 830M

Gibbs 8049u An Top Link

+16525763 Jauer Doctor 7020 35

GAR Concrete

7L Forever Lady X525

16869473 Circle A Forever Lady 7229

OCC Headliner 661H

OCC Dixie Erica 946K

OCC Doctor 940D

Jauer 6807 Traveler 35 1032

SS Objective T510 0T26

Chair Rock Grid Maker 4047

KMK Alliance 6595 187

BPAR Forever Lady E22 SF1

CWT
+31
MARB
+33
REA
+87
FAT
+029
\$B
+77.10

- ★ An impressive herd sire

BEPD		WEPD		YEPD		MILK		BW	\$B
+1.0	.33	+61	.22	+101	.21	+22	.11	74	+77.10

- ★ prospect from a leading sire group.

- ★ This bull records an individual yearling ratio of 103 and an individual ribeye ratio of 102.

- ★ Recommended for Heifers

121 Tanner Top Link Z331

Calved: 10/17/2012

Bull 17544265

Tattoo: Z331

OCC Missing Link 830M

Gibbs 8049u An Top Link

+16525763 Jauer Doctor 7020 35

Connealy Toby 865B

7L Erica X612

16865910 Bear Mtn BF Erica 611

OCC Headliner 661H

OCC Dixie Erica 946K

OCC Doctor 940D

Jauer 6807 Traveler 35 1032

Connealy Tobin

Breesha of Conanga 1251

Bear Mtn Freight Train 350L

Leachman Erica 1225

CWT
+26
MARB
+29
REA
+53
FAT
+034
\$B
+64.99

- ★ This bull has an individual birth

BEPD		WEPD		YEPD		MILK		BW	\$B
+9	.32	+59	.21	+89	.20	+24	.10	71	+64.99

- ★ ratio of 97 combined with an individual weaning ratio of 106.

- ★ The sire is a son of the Pathfinder Sire, OCC Missing Link 830M.

- ★ Recommended for Heifers



TANNER TOP LINK Z331 - Lot 121

122 Tanner Top Link Z394

Calved: 11/25/2012

Bull 17414388

Tattoo: Z394

OCC Missing Link 830M

Gibbs 8049u An Top Link

+16525763 Jauer Doctor 7020 35

CQS New Day EXT 1177

7L MS TA X562

16846609 7L MS Ta 7261

OCC Headliner 661H

OCC Dixie Erica 946K

OCC Doctor 940D

Jauer 6807 Traveler 35 1032

Boyd New Day 8005

JKS Miss Cheyenne 196

EE 039 Right Time 305

EE MS 356 TA 833

CWT
+25
MARB
+17
REA
+49
FAT
+042
\$B
+57.11

- ★ This bull

- combines an individual birth ratio of 96 with individual weaning and yearling ratios of 111.

- ★ The sire is a son of the Pathfinder Sire, OCC Missing Link 830M.

- ★ Recommended for Heifers

123 Tanner Top Link Z361

Calved: 11/07/2012

Bull 17414391

Tattoo: Z361

OCC Missing Link 830M

Gibbs 8049u An Top Link

+16525763 Jauer Doctor 7020 35

SQ Credence 675

7L Lady X508

+16850598 Bohi Lady 7126

OCC Headliner 661H

OCC Dixie Erica 946K

OCC Doctor 940D

Jauer 6807 Traveler 35 1032

SS Objective T510 0T26

Rita 3540 of 021 Rito 111

GAR Retail Product

Ideal 4465 of 6807 4286

CWT
+10
MARB
+32
REA
+64
FAT
+005
\$B
+51.68

- ★ An impressive

- bull from a leading sire group with an individual birth ratio of 99 combined with an individual weaning ratio of 112.

- ★ This bull traces to the breeds feed-efficiency matriarch, Ideal 4465 of 6807 4286.

- ★ Recommended for Heifers



TANNER TOP LINK Z361 - Lot 123

124 Tanner Lookout 3143

Calved: 01/22/2013

Bull 17599256

Tattoo: 3143

BC Lookout 7024
Tanner Lookout 605Y
+16603613 Three Trees Lucy T0082

SAV Bismarck 5682

Tanner Blackcap 007Y
16657295 Britton Blackcap 7031

OCC Legend 616L
Gibbet Hill Mignonne E37
Woodhill Foresight
Basin Lucy 3059
GAR Grid Maker
SAV Abigale 0451
CA Future Direction 5321
Sherrod Blackcap 0190

CWT
+20
MARB
+58
REA
+51
FAT
+013
\$B

★ This bull has an individual birth

BE PD	WE PD	YE PD	MILK	BW	\$B				
+9	.34	+48	.24	+79	.23	+23	.13	71	+71.28

ratio of 94 combined with an individual weaning ratio of 101 and individual IMF and ribeye ratios of 104 and 101, respectively, from a dam with a progeny birth ratio of 95 combined with a progeny weaning ratio of 101 on three calves.

★ This bull is a grandson of the Genex/CRI sires, BC Lookout 7024 and SAV Bismarck 5682.

★ Recommended for Heifers

125 Tanner Lookout 3136

Calved: 01/18/2013

Bull 17599253

Tattoo: 3136

BC Lookout 7024
Tanner Lookout 605Y
+16603613 Three Trees Lucy T0082

BT Right Time 24J

BoBo Princess 9757
+16798493 PAF Princess Travelf 6686

OCC Legend 616L
Gibbet Hill Mignonne E37
Woodhill Foresight
Basin Lucy 3059
Leachman Right Time
Sitz Everelda Entense 1905
DHD Traveler 6807
PAF Princess Ann 4120

CWT
+18
MARB
+46
REA
+31
FAT
+023
\$B

★ This bull by Tanner Lookout 605Y has an individual IMF ratio of 110, from a dam with a progeny IMF ratio of 109 on two calves.

★ The dam is by the Pathfinder Sire, BT Right Time 24J.

126 Tanner Lookout 3204 [DDC]

Calved: 02/01/2013

Bull 17599275

Tattoo: 3204

BC Lookout 7024
Tanner Lookout 605Y
+16603613 Three Trees Lucy T0082

Koupals B&B Traveler 4062

Tanner Gammer 240Z
16690133 Fox Run New Design 5063

OCC Legend 616L
Gibbet Hill Mignonne E37
Woodhill Foresight
Basin Lucy 3059
SAV 8180 Traveler 004
Koupal Voltage 5016
Twin Valley Precision E161
GAR New Design N71

CWT
+20
MARB
+51
REA
+28
FAT
+019
\$B

★ This son of Tanner Lookout 605Y has an individual IMF ratio of 109.

★ The dam of this bull is by the same sire as the dam of Whitestone Black Arrow Z101.

127 Tanner Lookout 3210 [DDC]

Calved: 02/03/2013

Bull 17599279

Tattoo: 3210

BC Lookout 7024
Tanner Lookout 605Y
+16603613 Three Trees Lucy T0082

CRA Bextor 872 5205 608

Tanner Ester 122Z
16713321 Tanner Ester X827

OCC Legend 616L
Gibbet Hill Mignonne E37
Woodhill Foresight
Basin Lucy 3059
BAR Ext Traveler 205
Cra Lady Jaye 608 498 S Easy
Whitstone Get R Done U003
Tanner Ester 626

CWT
+20
MARB
+51
REA
+61
FAT
+033
\$B

★ This bull has individual weaning and yearling ratios of 102 combined with individual IMF and ribeye ratios of 103 and 118, respectively.

★ The dam has a progeny weaning ratio of 111 on three calves and a progeny yearling ratio of 112 combined with progeny IMF and ribeye ratios of 104 and 123, respectively, on two head.



BC LOOKOUT 7024 - Featuring his influence.

128 Tanner Lookout 3211

Calved: 02/03/2013

Bull 17599280

Tattoo: 3211

BC Lookout 7024
Tanner Lookout 605Y
+16603613 Three Trees Lucy T0082

Tanner EXT U23 W745

Tanner Wintress 311Z
16678371 Tanner Wintress X125

OCC Legend 616L
Gibbet Hill Mignonne E37
Woodhill Foresight
Basin Lucy 3059
N Bar Emulation EXT
Sinclair Lady 2P61 4465
HA Perfect Image 4709
Koupals Wintress 0187

CWT
+28
MARB
+50
REA
+36
FAT
+031
\$B

★ This bull has an individual weaning ratio of 106 combined with individual IMF and ribeye ratios of 115 and 105, respectively.

★ The dam has a progeny birth ratio of 98 combined with a progeny weaning ratio of 111 on three calves and a progeny yearling ratio of 103 combined with progeny IMF and ribeye ratios of 105 on two head.

129 Tanner Lookout 3223 [DDC]

Calved: 02/07/2013

Bull 17599284

Tattoo: 3223

BC Lookout 7024
Tanner Lookout 605Y
+16603613 Three Trees Lucy T0082

Tanner EXT U23 W746

Tanner Queen Eisa 322Z
16691927 Tanner Queen Eisa 845

OCC Legend 616L
Gibbet Hill Mignonne E37
Woodhill Foresight
Basin Lucy 3059
N Bar Emulation EXT
Sinclair Lady 2P61 4465
B/R New Frontier 095
JD Queen Eisa 5921

CWT
+27
MARB
+58
REA
+15
FAT
+003
\$B

★ A grandson of the Genex/CRI sire, BC Lookout 7024, from the family that produced the Genex/CRI sire, JD Daigger 901.

★ This bull has an individual IMF ratio of 119.

★ Recommended for Heifers

130 Tanner Lookout 3227

Calved: 02/09/2013

Bull 17599287

Tattoo: 3227

BC Lookout 7024
Tanner Lookout 605Y
+16603613 Three Trees Lucy T0082

Tanner Foresight 608

Tanner Everelda Entense 906Y
16626398 Tanner Everelda Entense W779

OCC Legend 616L
Gibbet Hill Mignonne E37
Woodhill Foresight
Basin Lucy 3059
Woodhill Foresight
Britton Jestress 2049
GAR Exaltation 3144
HF Everelda Entense 080

CWT
+26
MARB
+49
REA
+52
FAT
+019
\$B

★ A blending of herd sire producing cow families, recording an individual weaning ratio of 101 along with individual IMF and ribeye ratios of 102 and 103, respectively.

★ The dam has a progeny weaning ratio of 104 on two calves.

★ Recommended for Heifers

TANNER ANGUS BULLS

131 Tanner Lookout 3330 [DDC]

Calved: 03/12/2013

Bull 17599325

Tattoo: 3330

BC Lookout 7024
+16603613 Three Trees Lucy T0082

OCC Legend 616L
Gibbet Hill Mignonne E37
Woodhill Foresight
Basin Lucy 3059

CWT
+26
MARB
+37
REA
+30
FAT
+0.38
\$B
+64.79

BC Matrix 4132
Tanner Queen Kimberly 153Z
+16679119 Alberda Queen Kimberly 111

OCC Emblazon 854E
CAF Pure Pride Ext 99
VDAR New Trend 315
Alberda Queen Kimberly 169

★ This bull has individual

BEPD	WEPD	YEPD	MILK	BW	\$B
+2.8	.34	+50	.24	+85	.23
+25	.13	78	+64.79		

weaning and yearling ratios of 108 and he is a grandson of the Genex/CRI sires, BC Lookout 7024 and BC Matrix 4132, from the family that produced the Genex/CRI sire, Alberda Traveler 416.

★ The dam has a progeny weaning ratio of 110 on three calves and a progeny yearling ratio of 112 on two head.

132 Tanner Lookout 3352

Calved: 03/22/2013

Bull 17599345

Tattoo: 3352

BC Lookout 7024
+16603613 Three Trees Lucy T0082

OCC Legend 616L
Gibbet Hill Mignonne E37
Woodhill Foresight
Basin Lucy 3059

CWT
+24
MARB
+37
REA
+54
FAT
+0.10
\$B
+68.89

Whitestone Get R Done U003
Tanner Erica X366
16322435 Tanner Erica 703

GAR Integrity
GAR Ext 4927
Twin Valley Fix IT 826 1080
J and J 2289

★ This high-performing

BEPD	WEPD	YEPD	MILK	BW	\$B
+1.6	.35	+51	.24	+78	.23
+30	.12	81	+68.89		

son of Tanner Lookout 605Y records an individual weaning ratio of 118 and an individual ribeye ratio of 110.

★ The dam has a progeny birth ratio of 95 combined with a progeny weaning ratio of 112 on four calves and a progeny yearling ratio of 107 combined with a progeny ribeye ratio of 107 on three head.

★ Recommended for Heifers

133 Tanner Lookout 3365

Calved: 03/28/2013

Bull 17599357

Tattoo: 3365

BC Lookout 7024
+16603613 Three Trees Lucy T0082

OCC Legend 616L
Gibbet Hill Mignonne E37
Woodhill Foresight
Basin Lucy 3059

CWT
+23
MARB
+69
REA
+35
FAT
-0.005
\$B
+78.03

GAR Predestined
Tanner Rita 400 Y480
16335105 GAR New Design 400

B/R New Design 036
GAR Ext 4206
B/R New Design 036
GAR Precision 1928

★ The dam of this bull has a

BEPD	WEPD	YEPD	MILK	BW	\$B
+3.5	.36	+43	.26	+79	.24
+23	.14	80	+78.03		

progeny weaning ratio of 102 on four calves along with progeny IMF and ribeye ratios of 101 and 102, respectively, on three head.

★ The grandam is a former Tanner foundation donor.

134 Tanner Lookout 3371 [DDC-NHF]

Calved: 03/30/2013

Bull 17599363

Tattoo: 3371

BC Lookout 7024
+16603613 Three Trees Lucy T0082

OCC Legend 616L
Gibbet Hill Mignonne E37
Woodhill Foresight
Basin Lucy 3059

CWT
+20
MARB
+53
REA
+42
FAT
+0.016
\$B
+68.41

GAR Integrity
Whitestone Susie V054
15393880 Whitestone Susie 479R

Bon View New Design 1407
GAR Precision 1019
Finks 5522-6148
Green Garden Susie 1246 S1

★ This bull has individual

BEPD	WEPD	YEPD	MILK	BW	\$B
+3.1	.36	+40	.26	+72	.24
+24	.13	83	+68.41		

IMF and ribeye ratios of 102 and 107, respectively, from a dam with a progeny weaning ratio of 101 on five calves and progeny IMF and ribeye ratios of 104 and 101, respectively, on three head.

★ The Pathfinder third dam produced the Pathfinder Sire Gardens Prime Time.

135 Tanner Lookout 3403

Calved: 04/02/2013

Bull 17599372

Tattoo: 3403

BC Lookout 7024
+16603613 Three Trees Lucy T0082

OCC Legend 616L
Gibbet Hill Mignonne E37
Woodhill Foresight
Basin Lucy 3059

CWT
+29
MARB
+44
REA
+48
FAT
+0.003
\$B
+77.18

Koupals B&B EXTRA 7080
Tanner Blackcap 9056
16437362 B&B Blackcap 9013

Nichols Extra K205
B&B Zara 304
Sitz SLS Rainmaker 7596
B&B Ext 7016

★ This bull has individual

BEPD	WEPD	YEPD	MILK	BW	\$B
+3.2	.35	+53	.25	+91	.24
+19	.12	84	+77.18		

weaning and yearling ratios of 101 and 105, respectively.

★ The grandam is a second-generation Pathfinder Dam.

136 Tanner Lookout 3414

Calved: 04/16/2013

Bull 17599383

Tattoo: 3414

BC Lookout 7024
+16603613 Three Trees Lucy T0082

OCC Legend 616L
Gibbet Hill Mignonne E37
Woodhill Foresight
Basin Lucy 3059

CWT
+29
MARB
+37
REA
+45
FAT
+0.023
\$B
+71.58

JLB Exacto 416
FoxCross Ms Foreverlady 4001
+15353627 Clifton Forever Lady 1044

GAR Precision 1680
Brost Burgess 041
DHD Traveler 6807
TRA Simply Forever 549

★ A top-performing son of Tanner

BEPD	WEPD	YEPD	MILK	BW	\$B
+1.7	.35	+48	.25	+79	.24
+25	.14	78	+71.58		

Lookout 605Y with an individual birth ratio of 96 combined with an individual weaning ratio of 112 and an individual yearling ratio of 104.

★ The dam has a progeny weaning ratio of 104 on eight calves and a progeny yearling ratio of 107, combined with progeny IMF and ribeye ratios of 100 and 104, respectively, on five head.

★ Recommended for Heifers

137 Tanner Advancer 2938

Calved: 12/22/2012

Bull 17599241

Tattoo: 2938

SAV Net Worth 4200
SAV Advancer 7909
+16056393 SAV Emblynette 7319

SAV 8180 Traveler 004
SAV May 2410
SAV Ext Emulation 5040
Sav Emblynette Diamond 5369

CWT
+30
MARB
+66
REA
+21
FAT
+0.010
\$B
+81.09

B/R New Frontier 095
Tanner Blackbird V200
15398815 Blackbird 740P of Whitestone

B/R New Design 036
White Fence Pride H1
SS Traveler 6807 T510
Baldridge Blackbird 211G

★ This son of the Tanner senior

BEPD	WEPD	YEPD	MILK	BW	\$B
+6	.36	+47	.26	+79	.25
+20	.16	79	+81.09		

herd sire, SAV Advancer 7909, has an individual birth ratio of 98 combined with individual weaning and yearling ratios of 100 and 101, respectively, and an individual IMF ratio of 110.

★ The dam records a progeny weaning ratio of 100 on five calves and a progeny yearling ratio of 101 combined with a progeny IMF ratio of 111 on four head.

★ Recommended for Heifers

138 Tanner Advancer 3348

Calved: 03/21/2013

Bull 17599341

Tattoo: 3348

SAV Net Worth 4200
SAV Advancer 7909
+16056393 SAV Emblynette 7319

SAV 8180 Traveler 004
SAV May 2410
SAV Ext Emulation 5040
Sav Emblynette Diamond 5369

CWT
+35
MARB
+43
REA
+31
FAT
+0
\$B
+80.21

B/R New Frontier 095
Tanner Evergreen W793
16047756 Limestone Evergreen S325

B/R New Design 036
White Fence Pride H1
SAV 8180 Traveler 004
HF Miss Traveler 312

★ A son of the longtime

BEPD	WEPD	YEPD	MILK	BW	\$B
+2.2	.36	+43	.26	+75	.25
+20	.15	83	+80.21		

featured Tanner herd sire, SAV Advancer 7909.

★ The dam is backed by the Pathfinder Sires, B/R New Frontier 095 and SAV 8180 Traveler 004.

★ Recommended for Heifers

139 Tanner Advancer 3353

Calved: 03/23/2013

Bull 17599346

Tattoo: 3353

SAV Net Worth 4200
SAV Advancer 7909
+16056393 SAV Emblynnette 7319

SAV 8180 Traveler 004
SAV May 2410
SAV Ext Emulation 5040
Sav Emblynnette Diamond 5369

CWT
+30
MARB
+47
REA
+32
FAT
+021
\$B

SS Objective T510 OT26
Bricton Lady 2P61 X814
+15998559 Sinclair Lady 2P61 4465

SS Traveler 6807 T510
SS Miss Rita R011 7R8
N Bar Prime Time D806
Ideal 4465 of 6807 4286

★ This son of SAV Advancer 7909

BEPD	WEPD	YEPD	MILK	BW	\$B
+4	.36	+36	.27	+71	.26
+24	.17	77	+75.12		

is from a flush sister to the ABS Global sire, Whitestone Advocate, stemming from the famous Tanner and Whitestone donor, Sinclair Lady 2P61 4465.

★ The dam of this bull has a progeny birth ratio of 91 combined with a progeny weaning ratio of 103 on three calves.

★ Recommended for Heifers



SINCLAIR LADY 2P61 4465 - The grandam of Lot 139.

140 Tanner Advancer 3327

Calved: 03/10/2013

Bull 17599323

Tattoo: 3327

SAV Net Worth 4200
SAV Advancer 7909
+16056393 SAV Emblynnette 7319

SAV 8180 Traveler 004
SAV May 2410
SAV Ext Emulation 5040
Sav Emblynnette Diamond 5369

CWT
+35
MARB
+34
REA
+26
FAT
+018
\$B

HSAF Bando 1961
Whitestone Toni X012
16078392 Whitestone Toni 6027

SAF 598 Bando 5175
JKS Miss Cheyenne 196
CAR Duke 104
B&B Toni 4038

★ This son of SAV Advancer 7909

BEPD	WEPD	YEPD	MILK	BW	\$B
+1.9	.36	+41	.26	+71	.25
+20	.16	80	+73.60		

is from a dam with a progeny weaning ratio of 100 on four calves.

★ Recommended for Heifers

143 Tanner Advocate 2609

Calved: 09/11/2012

Bull 17534285

Tattoo: 2609

SS Objective T510 OT26
Whitestone Advocate
+16095113 Sinclair Lady 2P61 4465

SS Traveler 6807 T510
SS Miss Rita R011 7R8
N Bar Prime Time D806
Ideal 4465 of 6807 4286

CWT
I+29
MARB
I+.77
REA
I+.29
FAT
I+.031
\$B

Boyd On Target 1083
KCS Blackcap 6315
+15284213 EXAR Blackcap 3127

SAF 598 Bando 5175
Boyd Forever Lady 7095
BR Midland
Leachman Blackcap 8261

★ This son of the

BEPD	WEPD	YEPD	MILK	BW	\$B
I+1.4	.05	I+52	.05	I+83	.05
I+24	.05	78	+81.68		

ABS Global sire, Whitestone Advocate, is from a dam with a progeny weaning ratio of 104 on three calves.

★ A maternal sister records a progeny weaning ratio of 105 on two calves.

★ Recommended for Heifers

141 Tanner Advancer 3359

Calved: 03/24/2013

Bull 17599352

Tattoo: 3359

SAV Net Worth 4200
SAV Advancer 7909
+16056393 SAV Emblynnette 7319

SAV 8180 Traveler 004
SAV May 2410
SAV Ext Emulation 5040
Sav Emblynnette Diamond 5369

CWT
+34
MARB
+22
REA
+42
FAT
+028
\$B

Koupal Brulee 698
Tanner Georgina X126
16047807 Koupal Georgina 672

Whitestone Xception
Koupals Zara 339
Whitestone Final Product
Koupals Scotchman 0195

★ This high-performing bull

BEPD	WEPD	YEPD	MILK	BW	\$B
+2.6	.36	+53	.26	+84	.25
+26	.15	85	+68.22		

has an individual weaning ratio of 113, by SAV Advancer 7909.

★ The dam records a progeny weaning ratio of 113 on four calves and a progeny yearling ratio of 105 on three head.

144 Tanner Advocate 2946

Calved: 12/25/2012

Bull 17578631

Tattoo: 144

SS Objective T510 OT26
Whitestone Advocate
+16095113 Sinclair Lady 2P61 4465

SS Traveler 6807 T510
SS Miss Rita R011 7R8
N Bar Prime Time D806
Ideal 4465 of 6807 4286

CWT
+28
MARB
+70
REA
+17
FAT
+036
\$B

SAV 004 Density 4336
Tanner Erica Eileen A106
16985072 Whitestone Erica Eileen 609T

SAV 8180 Traveler 004
SAV May 7238
BR Midland
TC Erica Eileen 6045

★ A son of the

BEPD	WEPD	YEPD	MILK	BW	\$B
+1.7	.36	+52	.27	+84	.27
+26	.16	70	+76.82		

ABS Global sire, Whitestone Advocate, with individual weaning and yearling ratios of 105 and 104, respectively.

★ The dam has a progeny weaning ratio of 109 on two calves, and she is by the Pathfinder Sire, SAV 004 Density 4336.

★ Recommended for Heifers

142 Tanner First Class 3109

Calved: 01/01/2013

Bull 17563592

Tattoo: 3109

SAV Net Worth 4200
SAV First Class 0207
16687685 SAV Duke Girl 7348

SAV 8180 Traveler 004
SAV May 2410
SAV Peacemaker 3179
AC Duke Girl 57

CWT
+15
MARB
+42
REA
+27
FAT
+015
\$B

Koupals B&B Traveler 4062
Whitestone Evergreen W243
15724004 Whitestone Evergreen U170

SAV 8180 Traveler 004
Koupal Voltage 5016
Bon View New Design 1407
EXAR Miss Traveler 3419

★ A maternal

BEPD	WEPD	YEPD	MILK	BW	\$B
I+2.3	.05	I+42	.05	I+73	.05
I+34	.05	75	+56.69		

brother to the Genex/CRI sire, Whitestone Black Arrow Z101, the all-time record-selling bull at Whitestone Farm.

★ The dam records a progeny birth ratio of 92 combined with progeny weaning and yearling ratios of 106 and 102, respectively, on three calves, and a progeny IMF ratio of 108 on eight head.



WHITESTONE EVERGREEN W243 - The dam of Lot 142.

TANNER ANGUS BULLS



TANNER EXT 2811 - Lot 145



TANNER CASANOVA 2752 - Lot 149

145 Tanner EXT 2811

Calved: 11/08/2012

Bull 17530966

Tattoo: 2811

Tanner EXT U23 W745
+15982832 Sinclair Lady 2P61 4465

Emulation N Bar 5522
N Bar Primrose 2424
N Bar Prime Time D806
Ideal 4465 of 6807 4286

CWT
+30
MARB
+.54
REA
+.16
FAT
+.042

Boyd New Day 8005
Tanner Rita W825
+16049957 Southern Rita 2103

AAR New Trend
SVF Forever Lady 57D
Rito 616 of 4820 6807
GAR Precision 2208

- ★ The sire of this bull is the result of mating the Pathfinder Sire, N Bar Emulation EXT with Sinclair Lady 2P61 4465.
- ★ This bull has an individual IMF ratio of 129, from a dam with a progeny weaning ratio of 106 on two calves.

BEPD		WEPD		YEPD		MILK		BW	\$B
+3.1	.34	+36	.24	+74	.24	+24	.15	82	+72.36

146 Tanner EXT 2760

Calved: 10/31/2012

Bull 17530961

Tattoo: 2760

Tanner EXT U23 W745
+15982832 Sinclair Lady 2P61 4465

Emulation N Bar 5522
N Bar Primrose 2424
N Bar Prime Time D806
Ideal 4465 of 6807 4286

CWT
+31
MARB
+.62
REA
+.32
FAT
+.022

SAV Net Worth 4200
Tanner Tiffany X335
+16284368 RAY Tiffany 5033

SAV 8180 Traveler 004
SAV May 2410
CA Future Direction 5321
B/R Ruby of Tiffany 9255

- ★ A blending of herd sire producing cow families.
- ★ The dam of this bull has a progeny IMF ratio of 110 on two head.
- ★ Recommended for Heifers

BEPD		WEPD		YEPD		MILK		BW	\$B
+1.3	.34	+29	.25	+63	.24	+23	.15	65	+81.00

147 Tanner EXT 2761

Calved: 10/31/2012

Bull 17530962

Tattoo: 2761

Tanner EXT U23 W745
+15982832 Sinclair Lady 2P61 4465

Emulation N Bar 5522
N Bar Primrose 2424
N Bar Prime Time D806
Ideal 4465 of 6807 4286

CWT
+20
MARB
+.46
REA
-.02
FAT
+.033

Bon View New Design 878
Tanner Joanie X314
+16284358 MB Joanie 8E8 1627

B/R New Design 036
Bon View Gammer 85
Rito 8E8 of 5H11 Traveler
LB Joanie HP 9614

- ★ The dam of this bull is a maternal sister to the Pathfinder Sire, Plowman 1627 of Millbrae SAR, stemming from the second-generation Pathfinder Dam, MB Joanie 8E8 1627.
- ★ This bull has an individual ribeye ratio of 105.
- ★ Recommended for Heifers

BEPD		WEPD		YEPD		MILK		BW	\$B
+2.1	.35	+30	.26	+58	.25	+21	.16	71	+58.28

148 Tanner EXT 3334

Calved: 03/14/2013

Bull 17599328

Tattoo: 3334

Tanner EXT U23 W745
+15982832 Sinclair Lady 2P61 4465

Emulation N Bar 5522
N Bar Primrose 2424
N Bar Prime Time D806
Ideal 4465 of 6807 4286

CWT
+21
MARB
+.55
REA
-.12
FAT
-.006

Three Trees Designer 0297
Whitestone Princess R206
14390878 Lindells Princess 011

B/R New Design 323
Three Trees Foreverlady 2337
Rockn D Ambush 1531
Bon View Princess 169

- ★ This grandson of the Pathfinder Sire, N Bar Emulation EXT, has an individual weaning ratio of 102, from a dam with a progeny weaning ratio of 105 on seven calves.
- ★ This bull is from the family that produced the Genex/CRI Pathfinder Sire, Bon View Balance 834.
- ★ Recommended for Heifers

BEPD		WEPD		YEPD		MILK		BW	\$B
+1.9	.36	+32	.25	+58	.25	+24	.15	83	+65.87

149 Tanner Casanova 2752

Calved: 10/27/2012

Bull 17530956

Tattoo: 2752

Whitestone Casanova Z037
+16649335 SAV Madame Pride 3356

OCC Headliner 661H
OCC Dixie Erica 946K
SAF 598 Bando 5175
SAV Madame Pride 8264

CWT
+28
MARB
+.52
REA
+.42
FAT
+.072

BCC Bushwacker 41-93
EHF Bonnie E490
+15007936 Finks Bonnie 0105 6241 Fix

Paramont Ambush 2172
RC Anita T Bando 918903
Schoenes Fix It 826
Finks Bonnie 6241 361 71

- ★ A high-indexing son of Whitestone Casanova Z037 with an individual weaning ratio of 118, along with an individual IMF ratio of 110.
- ★ The dam records a progeny birth ratio of 90 combined with a progeny weaning ratio of 106 on six calves and progeny IMF and ribeye ratios of 116 and 103, respectively, on six head.
- ★ Recommended for Heifers

BEPD		WEPD		YEPD		MILK		BW	\$B
+1.3	.35	+62	.25	+86	.23	+28	.15	71	+69.64

150 Tanner Casanova 2943 [DDC]

Calved: 12/25/2012

Bull 17599243

Tattoo: 2943

Whitestone Casanova Z037
+16649335 SAV Madame Pride 3356

OCC Headliner 661H
OCC Dixie Erica 946K
SAF 598 Bando 5175
SAV Madame Pride 8264

CWT
+48
MARB
+.52
REA
+.75
FAT
+.077

Tanner Foresight 608
Tanner Queen 124Z
16678354 Three Trees Queen T1913

Woodhill Foresight
Britton Jestress 2049
E&B 1680 Precision 1023
RAB-GAR MS Load UP - 4870N

- ★ A high-indexing son of Whitestone Casanova Z037 with individual weaning and yearling ratios of 116 and 120, respectively, combined with individual IMF and ribeye ratios of 106 and 115, respectively.
- ★ The dam has a progeny weaning ratio of 109 on three calves and a progeny yearling ratio of 118 on two head.
- ★ Recommended for Heifers

BEPD		WEPD		YEPD		MILK		BW	\$B
+1.0	.35	+64	.25	+115	.23	+27	.12	78	+90.84

TANNER ANGUS BULLS

151 Tanner Casanova 2906

Calved: 12/05/2012

Bull 17542666

Tattoo: 2906

OCC Missing Link 830M
Whitestone Casanova Z037
+16649335 SAV Madame Pride 3356

OCC Headliner 661H
OCC Dixie Erica 946K
SAF 598 Bando 5175
SAV Madame Pride 8264

CWT
I-28
MARB
I-59
REA
I-54
FAT
I-054
\$B

SAV Final Answer 0035
Tanner Blackcap Z701
16946700 Tanner Blackcap X230

Sitz Traveler 8180
SAV Emulous 8145
GAR Integrity
Tehama Blackcap E406

- ★ This high-indexing son of

BEPD	WEPD	YEPD	MILK	BW	\$B
+1.9	.34	+66	.25	+108	.23
+27	.13	67	+78.03		

Whitestone Casanova Z037 has an individual weaning ratio of 121 combined with an individual yearling ratio of 119.

- ★ The dam is by the Pathfinder Sire, SAV Final Answer 0035, stemming from the Pathfinder Dam, Tehama Blackcap E406.

- ★ Recommended for Heifers



WHITESTONE CASANOVA Z037 - Featuring his sons.

152 Tanner Casanova 2922 [DDC]

Calved: 12/12/2012

Bull 17599234

Tattoo: 2922

OCC Missing Link 830M
Whitestone Casanova Z037
+16649335 SAV Madame Pride 3356

OCC Headliner 661H
OCC Dixie Erica 946K
SAF 598 Bando 5175
SAV Madame Pride 8264

CWT
+28
MARB
+49
REA
+48
FAT
+020
\$B

SAV Bismarck 5682
Tanner Erica Dianna Y487
+16335110 Wulffs Erica Dianna 6410

GAR Grid Maker
SAV Abigale 0451
N Bar Emulation EXT
Wulffs Erica Dianna C116

- ★ This bull combines an

BEPD	WEPD	YEPD	MILK	BW	\$B
+5	.36	+59	.26	+97	.24
+23	.14	76	+76.71		

individual birth ratio of 95 with individual weaning and yearling ratios of 116 and 109, respectively.

- ★ The dam is a daughter of SAV Bismarck 5682, from the Tanner foundation donor, Wulffs Erica Dianna 6410.

- ★ Recommended for Heifers

155 Tanner Fedora 3360

Calved: 03/25/2013

Bull 17599353

Tattoo: 3360

Connealy Final Product
Whitestone Fedora A042
+16992815 SAV Madame Pride 3356

Connealy Product 568
Ebonista of Conanga 471
SAF 598 Bando 5175
SAV Madame Pride 8264

CWT
+29
MARB
+50
REA
+28
FAT
+038
\$B

BT Right Time 24J
BoBo Princess 9758
+16798441 PAF Princess Travelf 6686

Leachman Right Time
Sitz Everelda Entense 1905
DHD Traveler 6807
PAF Princess Ann 4120

- ★ A son of Whitestone

BEPD	WEPD	YEPD	MILK	BW	\$B
+1.8	.34	+49	.23	+88	.22
+25	.13	76	+72.69		

Fedora A042, from a dam by the Pathfinder Sire, BT Right Time 24J.

- ★ Recommended for Heifers

156 Tanner Fedora 3335 [DDP]

Calved: 03/16/2013

Bull 17599329

Tattoo: 3335

Connealy Final Product
Whitestone Fedora A042
+16992815 SAV Madame Pride 3356

Connealy Product 568
Ebonista of Conanga 471
SAF 598 Bando 5175
SAV Madame Pride 8264

CWT
+31
MARB
+72
REA
+44
FAT
+026
\$B

Rito 5M42 of 2536 PRED
Tanner Lass 270Z
16681006 Thistle Q757 of 757 R 3813

GAR Predestined
GAR Precision 2536
Rito 3813 of 8133 Precision
Pauls Lass 757

- ★ This son of Whitestone

BEPD	WEPD	YEPD	MILK	BW	\$B
-.5	.34	+43	.23	+83	.22
+22	.12	60	+85.21		

Fedora A042 has an individual IMF ratio of 117 and an individual ribeye ratio of 101.

- ★ The dam records a progeny IMF ratio of 110 on two head.

- ★ Recommended for Heifers



SAV MADAME PRIDE 3356 - The dam of Whitestone Casanova Z037 and Whitestone Fedora A042, whose progeny sell.

153 Tanner Fedora 3280

Calved: 02/23/2013

Bull 17599303

Tattoo: 3280

Connealy Final Product
Whitestone Fedora A042
+16992815 SAV Madame Pride 3356

Connealy Product 568
Ebonista of Conanga 471
SAF 598 Bando 5175
SAV Madame Pride 8264

CWT
+39
MARB
+54
REA
+57
FAT
+048
\$B

SAV Net Worth 4200
Tanner Queen 956Y
16689252 RAB-GAR MS Load UP - 4870N

SAV 8180 Traveler 004
SAV May 2410
RAB-GAR Load Up 4049J
RAB-GAR MS Primetime 4642K

- ★ A son of Whitestone

BEPD	WEPD	YEPD	MILK	BW	\$B
+2.3	.35	+50	.24	+89	.23
+26	.13	81	+85.32		

Fedora A042 with individual weaning and yearling ratios of 101 and 103, respectively, along with an individual ribeye ratio of 119.

- ★ The dam is a daughter of SAV Net Worth 4200 with a progeny ribeye ratio of 112 on two head.

154 Tanner Fedora 3342

Calved: 03/17/2013

Bull 17599336

Tattoo: 3342

Connealy Final Product
Whitestone Fedora A042
+16992815 SAV Madame Pride 3356

Connealy Product 568
Ebonista of Conanga 471
SAF 598 Bando 5175
SAV Madame Pride 8264

CWT
+25
MARB
+52
REA
+25
FAT
+022
\$B

SAV Advancer 7909
Tanner Ester 306Z
16706318 Tanner Ester 626

SAV Net Worth 4200
SAV Emblynette 7319
TPF Right Time E573
Tanner Ester 403

- ★ This son of Whitestone

BEPD	WEPD	YEPD	MILK	BW	\$B
+1.9	.34	+43	.23	+70	.21
+23	.12	80	+70.79		

Fedora A042 is a grandson of both Connealy Final Product and SAV Advancer 7909.

- ★ Recommended for Heifers

TANNER ANGUS BULLS



BON VIEW GAMMER 85 - Featuring her influence.

159 Tanner On Target 3349 [DDF]

Calved: 03/22/2013 Bull 17599342 Tattoo: 3349

Boyd On Target 1083	SAF 598 Bando 5175	CWT
Whitestone ON Target V315	Boyd Forever Lady 7095	+36
+15446172 Bon View Gammer 85	Bon View Bando 598	MARB
	Bon View Gammer 233	+57
Koupals B&B EXTRA 7080	Nichols Extra K205	REA
Tanner Blackcap 9117	B&B Zara 304	+50
16419310 B&B Blackcap 6031	Connealy Freightliner	FAT
	B&B Blackcap 3048	+016

- ★ This bull has individual IMF and ribeye ratios of 110 and 106, respectively.
- ★ The dam has a progeny IMF ratio of 112 and a progeny ribeye ratio of 101 on three head.
- ★ Recommended for Heifers

160 Tanner On Target 3336

Calved: 03/16/2013 Bull 17599330 Tattoo: 3336

Boyd On Target 1083	SAF 598 Bando 5175	CWT
Whitestone ON Target V315	Boyd Forever Lady 7095	+32
+15446172 Bon View Gammer 85	Bon View Bando 598	MARB
	Bon View Gammer 233	+43
Whitestone Traveler M021	Alberda Traveler 416	REA
Koupals Ebonette 5155	Whitestone Beauty K190	+23
15105018 Beefland Ebonette 831	TC Jim 689	FAT
	Beefland Ebonette K360	+045

- ★ This son of Whitestone On Target V315 has an individual yearling ratio of 107.
- ★ The dam records a progeny weaning ratio of 100 on five calves and a progeny yearling ratio of 106 on four head.

161 Tanner Predestined 3120

Calved: 01/02/2013 Bull 17599245 Tattoo: 3120

GAR Predestined	B/R New Design 036	CWT
Whitestone Predestined X056	GAR Ext 4206	+31
+16094215 Bon View Gammer 85	Bon View Bando 598	MARB
	Bon View Gammer 233	+70
OCC Glory 950G	OCC Exodus 712E	REA
Koupals Eldorene 274	OCC Dixie Erica 971E	+19
14204262 Beefland Eldorene 785	Summitrest Ext 0C34	FAT
	Beefland Wintress K238	+021

- ★ This bull combines an individual birth ratio of 93 with an individual IMF ratio of 142.
- ★ The dam has a progeny birth ratio of 99 on ten head.
- ★ Recommended for Heifers

162 Tanner Predestined 3146

Calved: 01/23/2013 Bull 17599257 Tattoo: 3146

GAR Predestined	B/R New Design 036	CWT
Whitestone Predestined X056	GAR Ext 4206	+20
+16094215 Bon View Gammer 85	Bon View Bando 598	MARB
	Bon View Gammer 233	+62
Rockn D Ambush 1531	Paramont Ambush 2172	REA
PEG 722P of Whitestone	MS Blackcap Band of RD 1301	+09
+14199652 Whitestone DA Peg 526	VDAR Lucys Boy	FAT
	Harmony Hill Peg 013	+010

- ★ This bull from the noted Peg family is backed by generations of moderate birth weight genetics, from a dam with a progeny birth ratio of 91 on eight calves.
- ★ The dam of this bull also records progeny IMF and ribeye ratios of 101 on five head.
- ★ Recommended for Heifers

157 Tanner On Target 2905

Calved: 12/05/2012 Bull 17562826 Tattoo: 2905

Boyd On Target 1083	SAF 598 Bando 5175	CWT
Whitestone ON Target V315	Boyd Forever Lady 7095	+36
+15446172 Bon View Gammer 85	Bon View Bando 598	MARB
	Bon View Gammer 233	+43
BCC Bushwacker 41-93	Paramont Ambush 2172	REA
Bricton Erica 4052	RC Anita T Bando 918903	+12
14774686 GVF Erica 1074	Bon View New Design 878	FAT
	GVF Erica 6086	+031

- ★ This bull has individual weaning and yearling ratios of 104 and 101, respectively, combined with an individual IMF ratio of 103.
- ★ The dam records a progeny birth ratio of 96 combined with a progeny weaning ratio of 105 on five calves and a progeny IMF ratio of 107 on five head.

158 Tanner On Target 3247

Calved: 02/16/2013 Bull 17599293 Tattoo: 3247

Boyd On Target 1083	SAF 598 Bando 5175	CWT
Whitestone ON Target V315	Boyd Forever Lady 7095	+48
+15446172 Bon View Gammer 85	Bon View Bando 598	MARB
	Bon View Gammer 233	+47
BC Marathon 7022	OCC Kirby 633K	REA
7L Lady 8403	Gibbet Hill Mignonne E37	+37
+16417698 Bohi Lady 1175	N Bar Emulation EXT	FAT
	Ideal 4465 of 6807 4286	+041

- ★ This bull combines an individual birth ratio of 97 with individual weaning and yearling ratios of 110 and 106, respectively, from a dam with a progeny weaning ratio of 102 on four calves and a progeny yearling ratio of 101 on three head, stemming from Bohi Lady 1175.
- ★ A maternal sister weaned her first calf with a ratio of 105.
- ★ Recommended for Heifers



BOHI LADY 1175 - The grandam of Lot 158.

163 Tanner Predestined 2749

Calved: 10/26/2012 Bull 17530954 Tattoo: 2749

GAR Predestined		B/R New Design 036	CWT
Whitestone Predestined X056		GAR Ext 4206	+36
+16094215 Bon View Gammer 85		Bon View Bando 598	MARB
		Bon View Gammer 233	+63
Whitestone Somerset U232		Whitestone Precision H141	REA
Whitestone Blacklass X802		GAR Ext 2114	+23
15980112 Greenwood Blacklass N238		Twin Valley Precision E161	FAT
		Sherrod Blacklass 8151	+019

- ★ This bull combines an individual birth ratio of 99 with individual weaning and yearling ratios of 103 and 109, respectively, and an individual IMF ratio of 106.
- ★ The dam records a progeny weaning ratio of 100 on four calves and a progeny yearling ratio of 104 combined with a progeny IMF ratio of 112 on three head.
- ★ Recommended for Heifers



TANNER 9M25 Z430 - Lot 167

164 Tanner Predestined 2909

Calved: 12/07/2012 Bull 17562827 Tattoo: 2909

GAR Predestined		B/R New Design 036	CWT
Whitestone Predestined X056		GAR Ext 4206	+35
+16094215 Bon View Gammer 85		Bon View Bando 598	MARB
		Bon View Gammer 233	+72
Morgans Direction 111 9901		CA Future Direction 5321	REA
Tanner Pride X828		MCC Barbie 9901 5205 797	+72
16009098 Tanner Pride T606		B/R New Frontier 095	FAT
		Whitestone Pride R190	+0

- ★ This bull has individual weaning and yearling ratios of 104 and 102, respectively, along with individual IMF and ribeye ratios of 112 and 119, respectively.
- ★ The dam records progeny weaning and yearling ratios of 101 and 109, respectively, combined with a progeny ribeye ratio of 109 on three calves.
- ★ Recommended for Heifers

167 Tanner 9M25 Z430 [DDC]

Calved: 12/26/2012 Bull 17434209 Tattoo: Z430

GAR Predestined		B/R New Design 036	CWT
Rito 9M25 of Rita 5F56 Pred		GAR Ext 4206	+40
+16340278 Rita 5F56 of 1198 FD		CA Future Direction 5321	MARB
		Rita 1198 of 2536 Rito 616	+75
Javer 353 Traveler 589 27		Javer 7111 Traveler 353 719	REA
Callaways Pride 1970		Javer 6807 Traveler 27 085	+95
16988295 Callaways Pride 1193		Rito 2V1 of 2536 1407	FAT
		Callaways Pride 0702	+019

- ★ This bull has individual IMF and ribeye ratios of 104 and 105, respectively, by the Genex/CRI sire, Rito 9M25 of Rita 5F56 Pred.
- ★ Recommended for Heifers

165 Tanner Predestined 2948

Calved: 12/25/2012 Bull 17599244 Tattoo: 2948

GAR Predestined		B/R New Design 036	CWT
Whitestone Predestined X056		GAR Ext 4206	+26
+16094215 Bon View Gammer 85		Bon View Bando 598	MARB
		Bon View Gammer 233	+59
CA Future Direction 5321		GAR Precision 1680	REA
Tanner Everelda X133		CA Miss Power Fix 308	+32
+16047814 Three Trees Everelda 2548		Bon View New Design 878	FAT
		BT Everelda Entense 55D	+011

- ★ A product of the herd sire producing Everelda Entense family with an individual birth ratio of 93 combined with an individual weaning ratio of 104 and an individual ribeye ratio of 104.
- ★ The dam has a progeny birth ratio of 97 combined with a progeny weaning ratio of 101 on four calves.
- ★ Recommended for Heifers

168 Tanner Predestined Z360

Calved: 11/06/2012 Bull 17414377 Tattoo: Z360

GAR Predestined		B/R New Design 036	CWT
7L Predestined 8487		GAR Ext 4206	+16
+16501794 7-L 1680 Blackcap S626		GAR Precision 1680	MARB
		A Plus Blackcap 8102	+86
Summitcrest High Prime OP62		Summitcrest High Prime OH29	REA
RAY Blackcap 6069		Summitcrest Barbara 1M99	+55
15355465 EHF Blackcap E367		B/R New Design 323	FAT
		EHF Blackcap 6053	+002

- ★ This bull has an individual IMF ratio of 118 and an individual birth ratio of 91, backed by generations of high-marbling genetics.
- ★ The third dam is a Pathfinder Dam.

166 Tanner New Day A136 [DDC]

Calved: 02/22/2013 Bull 17603023 Tattoo: A136

B/R New Day 454		Boyd New Day 8005	CWT
7L New Day X545		B/R Ruby 1224	N/A
16869489 Ray/7L Lady 8071		Connealy Forward	MARB
		Bohi Lady 1175	N/A
Dr J Analyst M250		BCC Bushwacker 41-93	REA
7L Rita 8318		GAR Precision 706	N/A
+16412872 FTJ Rita 503		GAR Predestined	FAT
		GAR Precision 810	N/A

- ★ This bull has an individual birth ratio of 96 combined with an individual weaning ratio of 104.
- ★ This bull traces to a high income-producing third dam.
- ★ Recommended for Heifers



TANNER PREDESTINED Z360 - Lot 168

TANNER ANGUS BULLS




TANNER NEW DESIGN Z274 - Lot 169

171 Tanner Evident Z392

Calved: 11/25/2012		Bull 17428741		Tattoo: Z392									
Te Mania Bartel B219		B/R New Dimension 7127		CWT									
Dunoon Evident E614		Te Mania Jedda W85		+12									
+17088396	Dunoon Elsa B681	Dunoon Highmark Y262		MARB									
		Dunoon Elsa X602		+87									
CA Future Direction 5321		GAR Precision 1680		REA									
JMc Queen Mina 4510 3282		CA Miss Power Fix 308		+62									
15076328	Queen Mia of Conanga 5983	SAF 598 Bando 5175		FAT									
		Queen Tara of Conanga		+004									
★ A flush brother to the previous		BEPD		WEPD		YEPD		MILK		BW		SB	
		1+2.9 .05		1+43 .05		1+73 .05		1+22 .05		89		+71.35	

- ★ This bull has 18 maternal sisters who post a collective progeny weaning ratio of 102.
- ★ The proven donor dam was bred in the McKellar herd and the grandam was bred in the Connealy herd.

169 Tanner New Design Z274 [DDC]

	Calved: 09/22/2012	Bull 17428323	Tattoo: Z274												
B/R New Design 036		VDAR New Trend 315													
GAR New Design 5050		B/R Blackcap Empress 76													
#+13728513	GAR Precision 706	GAR Precision 1680	CWT												
		GAR Ext 2114	+29												
			MARB												
CQS New Day EXT 1177		Boyd New Day 8005	+69												
7L Blackclass X573		JKS Miss Cheyenne 196	REA												
16846616	Maplecrest Blackclass A322	GAR Precision 1680	+78												
		GAR New Design 2808	FAT												
			-008												
★ This son of GAR															
New Design		<table><tr><th>BEPD</th><th>WEPD</th><th>YEPD</th><th>MILK</th><th>BW</th></tr><tr><td>+2.7</td><td>.36</td><td>+56</td><td>.27</td><td>+104</td></tr></table>	BEPD	WEPD	YEPD	MILK	BW	+2.7	.36	+56	.27	+104	<table><tr><th>\$B</th></tr><tr><td>+91.11</td></tr></table>	\$B	+91.11
BEPD	WEPD	YEPD	MILK	BW											
+2.7	.36	+56	.27	+104											
\$B															
+91.11															
5050 combines an individual birth ratio of 93 with individual weaning and yearling ratios of 107 and 111, respectively.															

170 Tanner Evident Z396 [DDC]

170

Calved: 11/25/2012

Bull 17428742

Tattoo: Z396

Te Mania Bartel B219

B/R New Dimension 7127

Dunoon Evident E614

Te Mania Jedda W85

+17088396

Dunoon Elsa B681

Dunoon Highmark Y262

Dunoon Elsa X602

CA Future Direction 5321

GAR Precision 1680

JMc Queen Mina 4510 3282

CA Miss Power Fix 308

15076328

Queen Mia of Conanga 5983

SAF 598 Bando 5175

Queen Tara of Conanga

CWT

+12

MARB

+80

REA

+55

FAT

+005

★ A son of the Australian sire, Dunoon Evident E614, with a pedigree backed by generations of high-marbling genetics.


★ The dam has a progeny weaning ratio of 103 on five natural calves and a progeny yearling ratio of 102 on three head, combined with progeny IMF and ribeye ratios of 105 and 101, respectively, on 50 head.

★ Eighteen maternal sisters post a collective progeny weaning ratio of 102.



TANNER EVIDENT Z396 - Lot 170

172 Tanner Traveler 3362

	Calved: 03/26/2013	Bull 17599355	Tattoo: 3362			
	SAV 8180 Traveler 004	Sitz Traveler 8180	CWT			
Koupals B&B Traveler 4062		Boyd Forever Lady 8003	+14			
14824697	Koupal Voltage 5016	Basic Black Albert	MARB			
		Beefland Voltage 005	+40			
	SAV 8180 Traveler 004	Sitz Traveler 8180	REA			
Whitestone Eblinette X035		Boyd Forever Lady 8003	-29			
16078402	Whitestone Eblinette 726	TPF Traveler T510 P152	FAT			
		JWK Eblinette 6012	+024			
★ This bull is a paternal brother						
BEPD		WEPD	YEPD	MILK	BW	\$B
+1.4 .35		+36 .25	+60 .24	+19 .16	72	+45.84

- ★ The dam records a progeny weaning ratio of 103 and a progeny IMF ratio of 107 on three calves.
- ★ Recommended for Heifers

173 Tanner Bextor 3288

17J	Calved: 02/27/2013	Bull 17599307	Tattoo: 3288
	CRA Bextor 872 5205 608	BAR Ext Traveler 205	CWT
Rito 8E28 of Rita 5TD3 Bexto		Cra Lady Jaye 608 498 S Easy	+18
15964510	Rita 5TD3 of 7R11 Integrity	GAR Integrity	MARB
		Rita 7R11 of 5H26 Rito 9M9	+97
	Rito 7O65 of Rita 5M46 Obj	SS Objective T510 OT26	REA
CCC 7065 Obj 39Y		Rita 5M46 of 2536 PRED	+86
17138590	This Rita SQ39 of Q395 RP	GAR Retail Product	FAT
		Thistle Q395 of 395T 1407	+030
★ This bull is sired			
by a son of the			
Pathfinder Sire, CRA Bextor 872 5205 608.			



TANNER SIMMENTAL/ANGUS BULLS



7L HARMONY Z308 - Lot 174



7L HARMONY Z307 - Lot 176

174 7L HARMONY Z308

Calved: 2012-10-05 Bull 2681127 Tattoo: Z308

MR NLC SUPERIOR S6018 ELLINGSON LEGACY M229
MR ISHEE BLK HARMONY 001 EBS JOKERS CAREN
2560241 ISHEE MS CISCO 139L ER BLACK CISCO 532C
ISHEE MS REDWINE 711

G A R INTEGRITY BON VIEW NEW DESIGN 1407
CSP ENAMEL S110 G A R PRECISION 1019
2584061 THREE TREES ENAMEL 3191 BR MIDLAND
EXAR MISS ENAMEL 1466

★ Simmental/Angus
Cross Bull.

★ This bull has an individual IMF ratio of 109.

★ Birth weight 70 pounds

CWT	11.3
MARB	0.54
REA	0.56
FAT	-0.008
API	145.9
TI	70.3

BEPD	WEPD	YEPD	MILK	TI
-1.9	0.32	51.2	0.29	74.6
0.32	0.29	74.6	0.30	21.8
0.19				70.3

176 7L HARMONY Z307

Calved: 2012-10-04 Bull 2681166 Tattoo: Z307

MR NLC SUPERIOR S6018 ELLINGSON LEGACY M229
MR ISHEE BLK HARMONY 001 EBS JOKERS CAREN
2560241 ISHEE MS CISCO 139L ER BLACK CISCO 532C
ISHEE MS REDWINE 711

G A R INTEGRITY BON VIEW NEW DESIGN 1407
7-L 6002 BLACKCAP S679 G A R PRECISION 1019
(2681165) A PLUS BLACKCAP 8102 N BAR EMULATION EXT
G A R SCOTCH CAP 867

★ Simmental/Angus
Cross Bull.

★ This bull combines an individual birth ratio of 86 with an individual yearling ratio of 112 and individual IMF and ribeye ratios of 102 and 105, respectively.

★ Birth weight 95 pounds

CWT	31.4
MARB	0.38
REA	0.75
FAT	0.006
API	113.9
TI	67.7

BEPD	WEPD	YEPD	MILK	TI
2.0	0.32	62.8	0.28	98.5
0.29				20.0
0.18				67.7

175 7L HARMONY Z333

Calved: 2012-10-18 Bull 2681131 Tattoo: Z333

MR NLC SUPERIOR S6018 ELLINGSON LEGACY M229
MR ISHEE BLK HARMONY 001 EBS JOKERS CAREN
2560241 ISHEE MS CISCO 139L ER BLACK CISCO 532C
ISHEE MS REDWINE 711

G A R INTEGRITY BON VIEW NEW DESIGN 1407
V A R GAMMER 6020 G A R PRECISION 1019
2584055 BON VIEW GAMMER 85 BON VIEW BANDO 598
BON VIEW GAMMER 233

★ Simmental/Angus
Cross Bull.

★ This bull has an individual ribeye ratio of 109.

★ Birth weight 84 pounds

CWT	20.5
MARB	0.34
REA	0.75
FAT	-0.002
API	123.6
TI	65.7

BEPD	WEPD	YEPD	MILK	TI
0.1	0.32	56.1	0.28	85.0
0.29				22.3
0.18				65.7

177 7L HARMONY Z342

Calved: 2012-10-28 Bull 2681180 Tattoo: Z342

MR NLC SUPERIOR S6018 ELLINGSON LEGACY M229
MR ISHEE BLK HARMONY 001 EBS JOKERS CAREN
2560241 ISHEE MS CISCO 139L ER BLACK CISCO 532C
ISHEE MS REDWINE 711

C A FUTURE DIRECTION 5321 G A R PRECISION 1680
WHITSTONE GAMMER W265 C A MISS POWER FIX 308
2645373 BON VIEW GAMMER 85 BON VIEW BANDO 598
BON VIEW GAMMER 233

★ Simmental/Angus
Cross Bull.

★ This bull has an individual birth ratio of 96 combined with individual weaning and yearling ratios of 112 and 109, respectively, and an individual IMF ratio of 112.

★ Birth weight 87 pounds

CWT	25.4
MARB	0.49
REA	0.63
FAT	0.032
API	133.8
TI	72.7

BEPD	WEPD	YEPD	MILK	TI
0.2	0.32	62.8	0.29	93.4
0.30				23.4
0.19				72.7



7L HARMONY Z333 - Lot 175



7L HARMONY Z342 - Lot 177

TANNER SIMMENTAL/ANGUS BULLS



7L HARMONY Z287 - Lot 181

181 7L HARMONY Z287

Calved: 2012-09-26 Bull 2681155 Tattoo: Z287

MR NLC SUPERIOR S6018
MR ISHEE BLK HARMONY 001
2560241 ISHEE MS CISCO 139L

ELLINGSON LEGACY M229
EBS JOKERS CAREN
ER BLACK CISCO 532C
ISHEE MS REDWINE 711

96
(2681154)

★ Simmental/Angus
Cross Bull.

★ This bull has an individual weaning ratio of 107.

★ Birth weight 77 pounds

BEPD	WEPD	YEPD	MILK	TI
1.3	0.20	57.9	0.24	75.0
0.25	20.7	0.15	56.1	

CWT	15.7
MARB	0.02
REA	0.53
FAT	-0.063
API	87.8

178 TANNER HARMONY A114

Calved: 2013-01-22 Bull 2742095 Tattoo: A114

MR NLC SUPERIOR S6018
MR ISHEE BLK HARMONY 001
2560241 ISHEE MS CISCO 139L

ELLINGSON LEGACY M229
EBS JOKERS CAREN
ER BLACK CISCO 532C
ISHEE MS REDWINE 711

G A R PREDESTINED
LHA RITA 7P5 OF 1425 PRED
2716333 JACS ADIA BURGESS 1425

B/R NEW DESIGN 036
G A R EXT 4206
PINE CREEK TRAVELER 124-1107
JACSADIABURGESS5326 7761

★ Simmental/Angus
Cross Bull.

★ This bull has individual weaning and yearling ratios of 102 and 105, respectively, along with an individual IMF ratio of 144.

★ Birth weight 83 pounds

BEPD	WEPD	YEPD	MILK	TI
0.0	0.31	59.4	0.27	92.0
0.28	25.0	0.18	78.5	

CWT	24.6
MARB	0.78
REA	0.62
FAT	0.016
API	142.7

182 7L HARMONY Z282

Calved: 2012-09-24 Bull 2681150 Tattoo: Z282

MR NLC SUPERIOR S6018
MR ISHEE BLK HARMONY 001
2560241 ISHEE MS CISCO 139L

ELLINGSON LEGACY M229
EBS JOKERS CAREN
ER BLACK CISCO 532C
ISHEE MS REDWINE 711

2
(2681149)

★ Simmental/Angus
Cross Bull.

★ This bull has an individual ribeye ratio of 115.

★ Birth weight 72 pounds

BEPD	WEPD	YEPD	MILK	TI
-1.0	0.28	52.1	0.24	69.3
0.26	19.6	0.15	56.2	

CWT	9.2
MARB	0.02
REA	0.61
FAT	-0.053
API	100.6

179 7L HARMONY Z266

Calved: 2012-09-19 Bull 2681144 Tattoo: Z266

MR NLC SUPERIOR S6018
MR ISHEE BLK HARMONY 001
2560241 ISHEE MS CISCO 139L

ELLINGSON LEGACY M229
EBS JOKERS CAREN
ER BLACK CISCO 532C
ISHEE MS REDWINE 711

MC BIG JAKE 501U
7L MS JAKE X727
2645453 R57

MC BIG JAKE 661R
OKF MS 52M6 COOLHAND501R

★ Simmental/Angus
Cross Bull.

★ This bull combines an individual birth ratio of 83 with individual weaning and yearling ratios of 121 and 118, respectively, and an individual ribeye ratio of 125.

★ Birth weight 89 pounds

BEPD	WEPD	YEPD	MILK	TI
2.7	0.30	74.2	0.26	105.6
0.27	20.9	0.16	65.3	

CWT	35.9
MARB	0.06
REA	0.86
FAT	-0.024
API	90.2

183 7L SUPERSTOUT Z388

Calved: 2012-11-18 Bull 2681189 Tattoo: Z388

SRS RIGHT-ON 22R
MR ISHEE SUPERSTOUT 014
2560245 ISHEE MS LUCKY DICE 312N

SRS J914 PREFERRED BEEF
SRS G720 GILLIAN
GW LUCKY DICE 187H
ISHEE MS MILLI 001K

S A V BISMARCK 5682
7L RITA 9426
2645412 7L RITA 7317

G A R GRID MAKER
S A V ABIGALE 0451
G A R RETAIL PRODUCT
CCC RITA242OFND14078FB1

★ Simmental/Angus
Cross Bull.

★ This bull has an individual birth ratio of 79 combined with an individual weaning ratio of 100.

★ Birth weight 99 pounds

BEPD	WEPD	YEPD	MILK	TI
3.6	0.32	74.6	0.28	114.6
0.29	22.5	0.18	75.2	

CWT	43.0
MARB	0.45
REA	0.89
FAT	-0.011
API	120.6

180 7L HARMONY Z294

Calved: 2012-09-28 Bull 2681158 Tattoo: Z294

MR NLC SUPERIOR S6018
MR ISHEE BLK HARMONY 001
2560241 ISHEE MS CISCO 139L

ELLINGSON LEGACY M229
EBS JOKERS CAREN
ER BLACK CISCO 532C
ISHEE MS REDWINE 711

E E 039 RIGHT TIME 305
7L MS T A 7261
2645375 E E MS 356 T A 833

E E 338 RIGHT TIME 039
E E MS 356 CHARISMA 632
HYLINE TRAVEL AGENT 356
E E MS 1116 RITO 562

★ Simmental/Angus
Cross Bull.

★ Birth weight 85 pounds

BEPD	WEPD	YEPD	MILK	TI
0.8	0.32	47.6	0.28	68.1
0.29	24.7	0.18	54.2	

CWT	11.5
MARB	0.13
REA	0.58
FAT	-0.023
API	97.1

184 TANNER SUPERSTOUT A103

Calved: 2013-01-05 Bull 2742081 Tattoo: A103

SRS RIGHT-ON 22R
MR ISHEE SUPERSTOUT 014
2560245 ISHEE MS LUCKY DICE 312N

SRS J914 PREFERRED BEEF
SRS G720 GILLIAN
GW LUCKY DICE 187H
ISHEE MS MILLI 001K

S A V PROVIDENCE 6922
BEAR MTN FOREVERLADY0059
2645418 BOYD FOREVER LADY 502

S A V 004 PREDOMINANT 4438
S A V MAY 7238
O C C EMBLAZON 854E
BOYD FOREVER LADY 811

★ Simmental/Angus
Cross Bull.

★ This bull has an individual weaning ratio of 113 and an individual ribeye ratio of 116.

★ Birth weight 89 pounds

BEPD	WEPD	YEPD	MILK	TI
2.7	0.31	74.4	0.27	106.8
0.28	27.3	0.18	71.1	

CWT	36.7
MARB	0.22
REA	1.04
FAT	-0.041
API	106.5

TANNER SIMMENTAL/ANGUS BULLS

185 7L SUPERSTOUT Z395

Calved: 2012-11-25 Bull 2681192 Tattoo: Z395

SRS RIGHT-ON 22R
MR ISHEE SUPERSTOUT 014
2560245 ISHEE MS LUCKY DICE 312N

SRS J914 PREFERRED BEEF
SRS G720 GILLIAN
GW LUCKY DICE 187H
ISHEE MS MILLI 001K

21AR ROUNDUP 7005
BOBO BLACKCAP 0011
2645417 V A R BLACKCAP 6295

HARB PENDLETON 765 J H
21AR BLACKBIRD LADY F645
B/R NEW DIMENSION 7127
G A R EXT 2114

CWT
31.8
MARB
0.50
REA
1.14
FAT
0.052
API
135.4

★ Simmental/Angus
Cross Bull.

BEPD	WEPD	YEPD	MILK	TI
0.8	0.32	69.2	0.28	102.9
0.29	23.9	0.18	76.9	

★ This bull has an individual weaning ratio of 103 along with an individual ribeye ratio of 106.

★ Birth weight 77 pounds



7L SUPERSTOUT Z395 - Lot 185

186 7L SUPERSTOUT Z432

Calved: 2012-12-30 Bull 2681210 Tattoo: Z432

SRS RIGHT-ON 22R
MR ISHEE SUPERSTOUT 014
2560245 ISHEE MS LUCKY DICE 312N

SRS J914 PREFERRED BEEF
SRS G720 GILLIAN
GW LUCKY DICE 187H
ISHEE MS MILLI 001K

THREE TREES ANTE UP T017
7L BLACKCAP 9387
2645405 7 L BLACKCAP 7137

BASIN UP THE LIMIT
BASIN LUCY 3859
S S OBJECTIVE T510 OT26
CIRCLE G BLACKCAP 522

CWT
38.4
MARB
0.59
REA
0.86
FAT
-0.030
API
138.1

★ Simmental/Angus
Cross Bull.

BEPD	WEPD	YEPD	MILK	TI
1.4	0.23	70.8	0.26	112.0
0.25	26.8	0.18	80.5	

★ This bull combines an individual birth ratio of 91 with an individual weaning ratio of 103.

★ Birth weight 89 pounds

189 7L TOPGRADE Z397

Calved: 2012-11-26 Bull 2681193 Tattoo: Z397

MR NLC UPGRADE U8676
MCM TOP GRADE 018X
2540315 MCM 513R

ELLINGSON LEGACY M229
MS NLC MOJO S6119 B
MCM MARBLER 307N
MCM 210M

SAND RANCH HAND

WHEATLAND BULL 131L
SAND LUCKY CHARMER
JDJ MACKENZIE 037K
EC364

CWT
9.3
MARB
0.43
REA
0.72
FAT
-0.062
API
149.9

MISS 7P X407
2592222 MISS 7P N25

★ Simmental/Angus
Cross Bull.

BEPD	WEPD	YEPD	MILK	TI
-2.7	0.35	47.1	0.33	72.7
0.34	30.3	0.18	69.3	

★ Birth weight 63 pounds

187 7L SUPERSTOUT Z402

Calved: 2012-11-30 Bull 2681195 Tattoo: Z402

SRS RIGHT-ON 22R
MR ISHEE SUPERSTOUT 014
2560245 ISHEE MS LUCKY DICE 312N

SRS J914 PREFERRED BEEF
SRS G720 GILLIAN
GW LUCKY DICE 187H
ISHEE MS MILLI 001K

G A R NEW DESIGN 5050
7L QUALITY LASS 9315
2645393 RR QUALITY LASS 3330

B/R NEW DESIGN 036
G A R PRECISION 706
H A IMAGE MAKER 0415
R R QUALITY LASS 9213

CWT
58.0
MARB
0.49
REA
1.06
FAT
-0.043
API
147.2

★ Simmental/Angus
Cross Bull.

BEPD	WEPD	YEPD	MILK	TI
1.0	0.32	88.5	0.28	146.0
0.29	32.2	0.18	90.6	

★ This bull combines an individual birth ratio of 106 with individual weaning and yearling ratios of 125 and 133, respectively, and an individual ribeye ratio of 108.

★ Birth weight 77 pounds

190 TANNER PRINCIPAL A123

Calved: 2013-02-03 Bull 2742094 Tattoo: A123

CNS DREAM ON L186
PMS PRINCIPAL 301U
2489920 LLL SARAH'S DELIGHT

NICHOLS LEGACY G151
CNS SHEEZA DREAM K107W
SAC MR MT 73G
LLL MS BIG COUNTRY K102

MYTTY IN FOCUS

S A F FOCUS OF E R
MYTTY COUNTESS 906
L382
MISS 7P J69

CWT
31.8
MARB
0.23
REA
0.52
FAT
-0.029
API
121.1

MISS 7P Y42
2609400 MISS 7P W83

★ Simmental/Angus
Cross Bull.

BEPD	WEPD	YEPD	MILK	TI
2.2	0.33	63.2	0.29	98.7
0.31	20.0	0.17	65.7	

★ This bull has an individual yearling ratio of 106.

★ Birth weight 83 pounds

188 7L SUPERSTOUT Z362

Calved: 2012-11-07 Bull 2681184 Tattoo: Z362

SRS RIGHT-ON 22R
MR ISHEE SUPERSTOUT 014
2560245 ISHEE MS LUCKY DICE 312N

SRS J914 PREFERRED BEEF
SRS G720 GILLIAN
GW LUCKY DICE 187H
ISHEE MS MILLI 001K

B/R 65R GENESIS
7L QUALITY LASS 9347
2645398 RR QUALITY LASS 3330

C A FUTURE DIRECTION 5321
B/R BLACKCAP EMPRESS 127
H A IMAGE MAKER 0415
R R QUALITY LASS 9213

CWT
40.3
MARB
0.64
REA
0.81
FAT
-0.032
API
145.0

★ Simmental/Angus
Cross Bull.

BEPD	WEPD	YEPD	MILK	TI
1.5	0.32	76.3	0.28	115.5
0.29	31.7	0.18	85.0	

★ This bull combines an individual birth ratio of 96 with individual weaning and yearling ratios of 117 and 106, respectively, and individual IMF and ribeye ratios of 105 and 106, respectively.

★ Birth weight 85 pounds



7L SUPERSTOUT Z362 - Lot 188

TANNER SIMMENTAL/ANGUS BULLS



7L DREAMS OVER Z283 - Lot 191



7L DREAMS OVER Z296 - Lot 193

191 7L DREAMS OVER Z283

Calved: 2012-09-25 Bull 2681151 Tattoo: Z283

FLYING B DREAMS OVER
2491454 CNS DREAM ON L186
DILLONS MS PRETTY WOMAN

7L ENCHANTRESS 8118
2645378 CONNEALY FORWARD
FV ENCHANTRESS R032

NICHOLS LEGACY G151
CNS SHEEZA DREAM K107W
GW BRIGHT LIGHT 019H
LITTLEPAGE SUNDOWN SUSAN
CONNEALY ONWARD
BECKY LEE OF CONANGA 74
S V F BANDOLIER
JRS ENCHANTRESS 16A

CWT	13.5
MARB	0.49
REA	0.41
FAT	-0.066
API	139.5
TI	65.5

- ★ Simmental/Angus Cross Bull.
- ★ This bull has individual IMF and ribeye ratios of 104 and 102, respectively.
- ★ Birth weight 83 pounds

								105.0
BEPD		WEPD		YEPD		MILK		TI
-0.1	0.30	46.0	0.27	73.0	0.28	28.9	0.18	65.5

193 7L DREAMS OVER Z296

Calved: 2012-09-28 Bull 2681160 Tattoo: Z296

FLYING B DREAMS OVER
2491454 CNS DREAM ON L186
DILLONS MS PRETTY WOMAN

7L MS RIGHT TIME 8399
2645379 RIVERBEND MILE HIGH 3718
EE MS 305 RIGHT TIME 664

NICHOLS LEGACY G151
CNS SHEEZA DREAM K107W
GW BRIGHT LIGHT 019H
LITTLEPAGE SUNDOWN SUSAN
BON VIEW NEW DESIGN 1407
G A R PRECISION 1919
E E 039 RIGHT TIME 305
E E MS 356 T A 833

CWT	9.3
MARB	0.42
REA	0.31
FAT	-0.079
API	125.0
TI	59.2

- ★ Simmental/Angus Cross Bull.
- ★ Birth weight 77 pounds

BEPD								WEPD	YEPD	MILK	TI
-0.4	0.31	38.0	0.27	65.9	0.28	27.5	0.18	59.2			

192 7L DREAMS OVER Z363

Calved: 2012-11-08 Bull 2681186 Tattoo: Z363

FLYING B DREAMS OVER
2491454 CNS DREAM ON L186
DILLONS MS PRETTY WOMAN

G225
(2681185)

NICHOLS LEGACY G151
CNS SHEEZA DREAM K107W
GW BRIGHT LIGHT 019H
LITTLEPAGE SUNDOWN SUSAN

CWT	12.1
MARB	0.24
REA	-0.12
FAT	-0.039
API	98.6
TI	51.4

- ★ Simmental/Angus Cross Bull.
- ★ Birth weight 83 pounds

								50.0
BEPD		WEPD		YEPD		MILK		TI
1.2	0.28	40.2	0.23	66.8	0.25	19.8	0.14	51.4

194 7L DREAMS OVER Z286

Calved: 2012-09-25 Bull 2681153 Tattoo: Z286

FLYING B DREAMS OVER
2491454 CNS DREAM ON L186
DILLONS MS PRETTY WOMAN

7L BLACKCAP 8458
2645381 STEVENSON MONEYMAKER R185
MGR BLACKCAP 7016

NICHOLS LEGACY G151
CNS SHEEZA DREAM K107W
GW BRIGHT LIGHT 019H
LITTLEPAGE SUNDOWN SUSAN
BOYD ON TARGET 1083
STEVENSON CLOVA PRIDE L888
G A R INTEGRITY
G A R PRECISION 4519

CWT	15.4
MARB	0.47
REA	0.07
FAT	-0.058
API	119.9
TI	61.5

- ★ Simmental/Angus Cross Bull.
- ★ Birth weight 86 pounds

CART PRECISION 1017								115.9
BEPD		WEPD		YEPD		MILK		TI
0.5	0.30	44.3	0.27	74.2	0.28	22.5	0.18	61.5



7L DREAMS OVER Z363 - Lot 192



7L DREAMS OVER Z286 - Lot 194

TANNER SIMMENTAL/ANGUS BULLS



7L DREAMS OVER Z292 - Lot 195



7L SFG UPGRADE Z316 - Lot 198

195 7L DREAMS OVER Z292

Calved: 2012-09-27 Bull 2681157 Tattoo: Z292

CNS DREAM ON L186
FLYING B DREAMS OVER
2491454 DILLONS MS PRETTY WOMAN

SYDGEN 1407 CORONA 2016
SYDGEN RACHEL 7005
2645371 SYDGEN RACHEL 4999

NICHOLS LEGACY G151
CNS SHEEZA DREAM K107W
GW BRIGHT LIGHT 019H
LITTLEPAGE SUNDOWN SUSAN

BON VIEW NEW DESIGN 1407
V N A R PERFECTION 142F 180K
S A F DIRECTIVE
S A F RACHEL 9425

CWT	18.3
MARB	0.55
REA	0.26
FAT	-0.040
API	129.7
TI	66.9

★ Simmental/Angus Cross Bull.

★ This bull combines an individual birth ratio of 96 with an individual weaning ratio of 103 and an individual IMF ratio of 105.

★ Birth weight 87 pounds

								TECH
BEPD		WEPD		YEPD		MILK		TI
0.5	0.31	49.5	0.27	79.5	0.28	24.2	0.18	66.9

198 7L SFG UPGRADE Z316

Calved: 2012-10-08 Bull 2681172 Tattoo: Z316

ELLINGSON LEGACY M229
MR NLC UPGRADE U8676
2474338 MS NLC MOJO S6119 B

O C C GREAT PLAINS 943G
MCCO 943G BURGESS 523
2570723 R D B MS MAX 91

NICHOLS LEGACY G151
ELLINGSON MS PSTOCK K58
GLS MOJO M38
GFI DARLA M410

N BAR EMULATION EXT
DIXIE ERICA OF C H 1019
G T MAXIMUM
R D B MISS BURGESS Z325

CWT	41.6
MARB	0.46
REA	1.06
FAT	-0.060
API	123.0
TI	77.4

★ Simmental/Angus Cross Bull.

★ Birth weight 92 pounds

								TEER
BEPD		WEPD		YEPD		MILK		TI
1.8	0.33	71.7	0.29	116.1	0.30	23.3	0.23	77.4

196 TANNER DREAMS OVER A109

Calved: 2013-01-16 Bull 2742084 Tattoo: A109

CNS DREAM ON L186
FLYING B DREAMS OVER
2491454 DILLONS MS PRETTY WOMAN

GDAR GAME DAY 449
GIBBS 0549X JAUER 8016U
2615219 GIBBS 8016U JAUER 7020

NICHOLS LEGACY G151
CNS SHEEZA DREAM K107W
GW BRIGHT LIGHT 019H
LITTLEPAGE SUNDOWN SUSAN

BOYD NEW DAY 8005
G D A R MISS WIX 474
O C C MISSING LINK 830M
JAUER DOCTOR 7020 35

CWT	16.6
MARB	0.45
REA	0.49
FAT	-0.015
API	130.2
TI	65.0

★ Simmental/Angus Cross Bull.

★ Birth weight 79 pounds

								1991
BEPD		WEPD		YEPD		MILK		TI
-0.4	0.31	47.4	0.26	78.7	0.25	25.5	0.18	65.0

199 7L UPGRADE Z389

Calved: 2012-11-21 Bull 2681190 Tattoo: Z389

ELLINGSON LEGACY M229
MR NLC UPGRADE U8676
2474338 MS NLC MOJO S6119 B

G A R RETAIL PRODUCT
MGR BLACKCAP 7113
2584073 THREETREES BLACKCAP 5546

NICHOLS LEGACY G151
ELLINGSON MS PSTOCK K58
GLS MOJO M38
GFI DARLA M410

G A R PRECISION 1680
G A R EXT 4927
BON VIEW NEW DESIGN 208
G A R PRECISION 4519

CWT	32.3
MARB	0.76
REA	0.81
FAT	-0.092
API	143.6
TI	80.3

★ Simmental/Angus Cross Bull.

★ Birth weight 89 pounds

								TI
BEPD		WEPD		YEPD		MILK		TI
0.9	0.33	60.7	0.29	102.0	0.30	27.0	0.23	80.3

197 7L DREAMS OVER Z258

Calved: 2012-09-16 Bull 2681140 Tattoo: Z258

CNS DREAM ON L186
FLYING B DREAMS OVER
2491454 DILLONS MS PRETTY WOMAN

G A R PREDESTINED
V A R RITA 9173
2645384 GAR FUTURE DIRECTIONH427

NICHOLS LEGACY G151
CNS SHEEZA DREAM K107W
GW BRIGHT LIGHT 019H
LITTLEPAGE SUNDOWN SUSAN

B/R NEW DESIGN 036
G A R EXT 4206
C A FUTURE DIRECTION 5321
G A R 1407 NEW DESIGN143

CWT	10.8
MARB	0.69
REA	0.32
FAT	0.074
API	137.3
TI	63.6

★ Simmental/Angus Cross Bull.

★ Birth weight 85 pounds

CAPR 107 NEW DESIGN 10								107.5
BEPD		WEPD		YEPD		MILK		TI
0.2	0.30	38.9	0.27	67.0	0.28	25.1	0.18	63.6



7L UPGRADE Z389 - Lot 199

TANNER SIMMENTAL/ANGUS BULLS



TANNER SHARPER IMAGE Z383 - Lot 200



7L LUCKY MAN Z382 - Lot 202

200 TANNER SHARPER IMAGEZ383

Calved: 2012-11-17 Bull 2741995 Tattoo: Z383

TJ SHARPER IMAGE 809U
2483888 TJ MISS BANDO S27

MC ONWARD 8004

MISS 7P X398

2592190 MISS 7P T114

★ Simmental/Angus
Cross Bull.

★ Birth weight 67 pounds

TJ 57J THE GAMBLER
MEGAN 9M
LT 598 BANDO 9074
TJ MISS ULTRAVOX P12
CONNELLY ONWARD
MISS MCKFREIGHTLINER4001
NICHOLS LEGACY G151
MISS 7P P207

CWT
40.8
MARB
0.37
REA
0.38
FAT
-0.015
API
133.9
TI
76.5

BEPD	WEPD	YEPD	MILK	TI
0.5	0.22	73.9	0.20	118.3
0.20	22.7	0.18		

202 7L LUCKY MAN Z382

Calved: 2012-11-16 Bull 2681137 Tattoo: Z382

GW LUCKY MAN 644N
2223338 GW MISS 600U 964J

SCHURRTOP MC 2500

7-L 2500FOREVERLADY S671

2584065 BOYD FOREVER LADY 7120

★ Simmental/Angus
Cross Bull.

★ This bull combines an individual birth ratio of 87 with individual weaning and yearling ratios of 110 and 103, respectively, and an individual ribeye ratio of 105.

★ Birth weight 94 pounds

LCHMAN LUCKY BUCK 7049C
GW MISS 600U 508C
CIRCLE S LEACHMAN 600U
GW MISS LUCKY BUCK 750G

SCHURRTOP M C

SCHURRTOP R S 1413 2153

A A R NEW TREND

S V F FOREVER LADY 57D

CWT
37.1
MARB
0.29
REA
0.56
FAT
-0.073
API
114.3
TI
70.3

BEPD	WEPD	YEPD	MILK	TI
2.1	0.33	68.5	0.29	108.0
0.30	26.1	0.23		

201 7L LUCKY BOY Z421

Calved: 2012-12-13 Bull 2681203 Tattoo: Z421

GW LUCKY BOY 252U
2471391 GW MISS NEW DEAL 814TS

SRS RIGHT-ON 22R

MISS 7P Y38

2609391 MISS 7P 159

★ Simmental/Angus
Cross Bull.

★ Birth weight 78 pounds

GW LUCKY CHARM 665K
GW MISS 600U 964J
LCC NEW DEAL G673L
GW MISS MATERNAL 523P
SRS J914 PREFERRED BEEF
SRS G720 GILLIAN
BLACK SHAMROCK E157
M213

CWT
27.7
MARB
0.31
REA
0.73
FAT
-0.029
API
135.7
TI
69.7

BEPD	WEPD	YEPD	MILK	TI
1.2	0.35	63.1	0.26	94.7
0.26	24.8	0.22		

203 7L LUCKY MAN Z374

Calved: 2012-11-13 Bull 2681125 Tattoo: Z374

GW LUCKY MAN 644N
2223338 GW MISS 600U 964J

B/R NEW DESIGN 036

HCC ROSE BLACKBURR 5675

2584059 THOMASROSEBLACKBURR 4020

★ Simmental/Angus
Cross Bull.

★ Birth weight 89 pounds

LCHMAN LUCKY BUCK 7049C
GW MISS 600U 508C
CIRCLE S LEACHMAN 600U
GW MISS LUCKY BUCK 750G

V D A R NEW TREND 315

B/R BLACKCAP EMPRESS 76

R R TRAVELER 5204

THOMASROSEBLACKBURR 2397

CWT
33.4
MARB
0.53
REA
0.40
FAT
-0.022
API
137.6
TI
73.7

BEPD	WEPD	YEPD	MILK	TI
0.7	0.33	60.6	0.29	104.3
0.30	27.9	0.23		



7L LUCKY BOY Z421 - Lot 201

204 COMMERCIAL BULL

Calved: Fall 2012

**THANKS FOR
ATTENDING THIS SALE.**



**MR ISHEE
BLACKCAP
HARMONY 001**



**MR ISHEE
SUPERSTOUT
014**



**CNS DREAM
ON L186**



**MR NLC
UPGRADE
U8676**



**GW LUCKY
MAN 644N**

Expected Progeny Difference (EPD), is the prediction of how future progeny of each animal are expected to perform relative to the progeny of other animals listed in the database. EPDs are expressed in units of measure for the trait, plus or minus. Interim EPDs may appear on young animals when their performance has yet to be incorporated into the American Angus Association National Cattle Evaluation (NCE) procedures. This EPD will be preceded by an "I", and may or may not include the animal's own performance record for a particular trait, depending on its availability, appropriate contemporary grouping, or data edits needed for NCE.

Accuracy (ACC), is the reliability that can be placed on the EPD. An accuracy of close to 1.0 indicates higher reliability. Accuracy is impacted by the number of progeny and ancestral records included in the analysis.

\$Value Indexes, are multi-trait selection indexes, expressed in dollars per head, to assist beef producers by adding simplicity to genetic selection decisions. The \$Value is an estimate of how future progeny of each sire are expected to perform, on average, compared to progeny of other sires in the database if the sires were randomly mated to cows and if calves were exposed to the same environment.

PRODUCTION

Calving Ease Direct (CED), is expressed as a difference in percentage of unassisted births, with a higher value indicating greater calving ease in first-calf heifers. It predicts the average difference in ease with which a sire's calves will be born when he is bred to first-calf heifers.

Birth Weight EPD (BW), expressed in pounds, is a predictor of a sire's ability to transmit birth weight to his progeny compared to that of other sires.

Weaning Weight EPD (WW), expressed in pounds, is a predictor of a sire's ability to transmit weaning growth to his progeny compared to that of other sires.

Yearling Weight EPD (YW), expressed in pounds, is a predictor of a sire's ability to transmit yearling growth to his progeny compared to that of other sires.

Yearling Height EPD (YH), is a predictor of a sire's ability to transmit yearling height, expressed in inches, compared to the that of other sires.

Scrotal Circumference EPD (SC), expressed in centimeters, is a predictor of the difference in transmitting ability for scrotal size compared to that of other sires.

MATERNAL

Calving Ease Maternal (CEM), is expressed as a difference in percentage of unassisted births with a higher value indicating greater calving ease in first-calf daughters. It predicts the average ease with which a sire's daughters will calve as first-calf heifers when compared to daughters of other sires.

Maternal Milk EPD (Milk), is a predictor of a sire's genetic merit for milk and mothering ability as expressed in his daughters compared to daughters of other sires. In other words, it is that part of a calf's weaning weight attributed to milk and mothering ability.

Mature Weight EPD (MW), expressed in pounds, is a predictor of the difference in mature weight of daughters of a sire compared to the daughters of other sires.

Mature Height EPD (MH), expressed in inches, is a predictor of the difference in mature height of a sire's daughters compared to daughters of other sires.

Cow Energy Value (\$EN), expressed in dollars savings per cow per year, assesses differences in cow energy requirements as an expected dollar savings difference in daughters of sires. A larger value is more favorable when comparing two animals (more dollars saved on feed energy expenses). Components for computing the cow \$EN savings difference include lactation energy requirements and energy costs associated with differences in mature cow size.

CARCASS

Carcass Weight EPD (CW), expressed in pounds is a predictor of the differences in hot carcass weight of a sire's progeny compared to progeny of other sires.

Marbling EPD (Marb), expressed as a fraction of the difference in USDA marbling score of a sire's progeny compared to progeny of other sires.

Ribeye Area EPD (RE), expressed in square inches, is a predictor of the difference in ribeye area of a sire's progeny compared to progeny of other sires.

Fat Thickness EPD (Fat), expressed in inches, is a predictor of the differences in external fat thickness at the 12th rib (as measured between the 12th and 13th ribs) of a sire's progeny compared to progeny of other sires.

\$VALUE INDEXES

\$Value indexes are multi-trait selection indexes, expressed in dollars per head, to assist beef producers by adding simplicity to genetic selection decisions. The \$Value is an estimate of how future progeny of each sire are expected to perform, on average, compared to progeny of other sires in the database if the sires were randomly mated to cows and if calves were exposed to the same environment.

Weaned Calf Value (\$W), an index value expressed in dollars per head, is the expected average difference in future progeny performance for preweaning merit. \$W includes both revenue and cost adjustments associated with differences in birth weight, weaning direct growth, maternal milk, and mature cow size.

Feedlot Value (\$F), an index value expressed in dollars per head, is the expected average difference in future progeny performance for postweaning merit compared to progeny of other sires.

Grid Value (\$G), an index value expressed in dollars per head, is the expected average difference in future progeny performance for carcass grid merit compared to progeny of other sires.

Quality Grade (\$QG) \$QG represents the quality grade segment of the economic advantage found in \$G. \$QG is intended for the specialized user wanting to place more emphasis on improving quality grade. The carcass marbling (Marb) EPD contributes to \$QG.

Yield Grade (\$YG) \$YG represents the yield grade segment of the economic advantage found in \$G. \$YG is intended for the specialized user wanting to place more emphasis on red meat yield. It provides a multi-trait approach to encompass ribeye, fat thickness and weight into an economic value for red meat yield.

Beef Value (\$B), an index value expressed in dollars per head, is the expected average difference in future progeny performance for postweaning and carcass value compared to progeny of other sires.

TANNER FEATURED ANGUS SIRES



WHITESTONE BLACK ARROW Z101



DR SIERRA CUT 7404



SAV NET WORTH 4200



HOOVER DAM



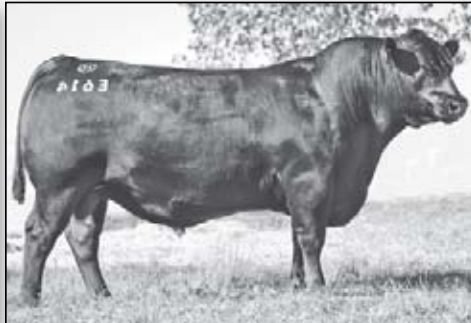
SS OBJECTIVE T510 QT26



SAV HEAVY HITTER 6347



WHITESTONE ADVOCATE



DUNOON EVIDENT E614



SAV IRON MOUNTAIN 8066



N BAR EMULATION EXT



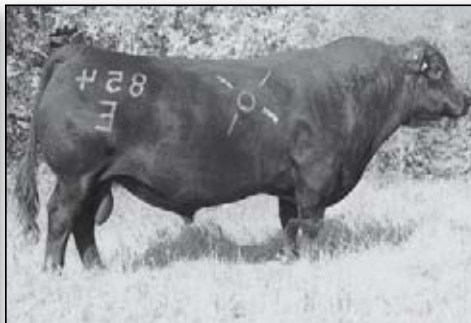
OCC MISSING LINK 830M



BC LOOKOUT 7024



DHD TRAVELER 6807



OCC EMBLAZON 854E



DUFF JETSET 7122

TANNER FEATURED ANGUS SIRES



SAV HARVESTOR 0338



SAV PIONEER 7301



SAV BISMARCK 5682



SAV HERITAGE 6295



SAV THUNDERBIRD 9061



SAV BRAND NAME 9115



SAV FIRST CLASS 0207



APEX WINDY 078



WHITESTONE ARMANDO A074



SAV ADVANCER 7909



EXAR SIGNIFICANT 1769B



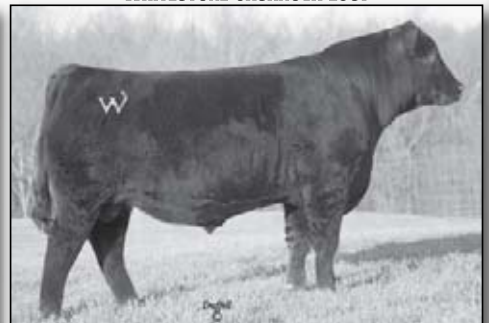
WHITESTONE CASANOVA Z037



SAV 707 RITO 9182

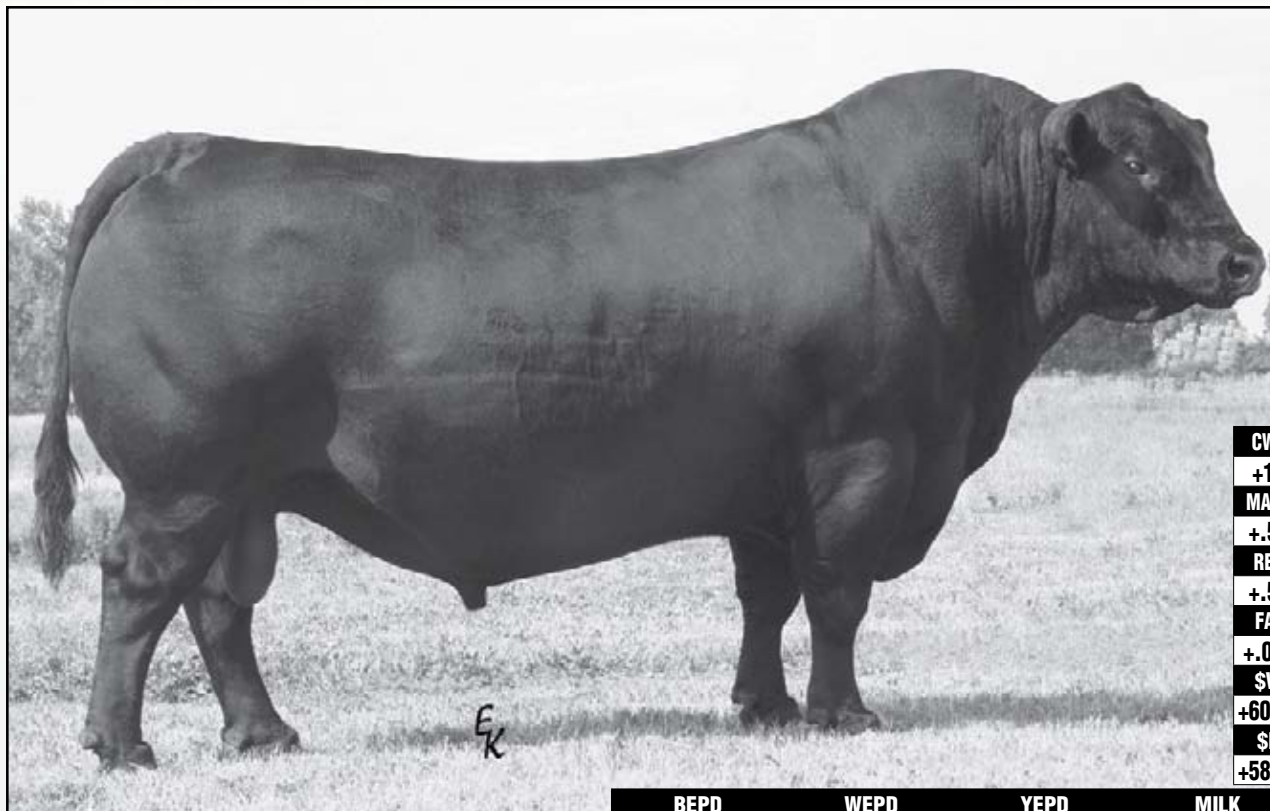


SAV EXPEDITION 1037



WHITESTONE FEDORA A042

TANNER FEATURED AI SIRES



SAV FINAL ANSWER 0035

Featuring 12 sons and 10 grandsons.

CWT
+13
MARB
+.51
REA
+.56
FAT
+.057
\$W
+60.26
\$B
+58.20

BEPD		WEPD		YEPD		MILK	
-.9	.98	+61	.98	+102	.97	+25	.95



SITZ UPWARD 307R

Featuring 11 sons and 28 grandsons.

CWT
+81
MARB
+.45
REA
+.76
FAT
+.011
\$W
+63.32
\$B
+104.73

BEPD		WEPD		YEPD		MILK	
+2.5	.98	+71	.97	+132	.96	+41	.93





Testimonials of Satisfied Customers

"We are very happy with our Tanner bulls! The calves are the best we've ever had. People drive by and stop to ask if we'd consider selling them straight out of the pasture."

We've bred these bulls to both Angus and Black Baldies and the calves are great from both groups. Some have brought top dollar at the stockyard. Several buyers have said they attended those sales because our calves would be there. We can't help but credit that to our Tanner bulls. Cattlemen like us depend on our bulls to bring in a quality, top-dollar crop. We are super pleased with the job the Tanner bulls are doing."

Brown Farm

Charlie and Cindy Brown
Philadelphia, Mississippi

"We have been pleased with Tanner Farm bulls. The staff has been very accommodating to help us make our purchases based on sire and dam information. Our bulls are working well with our commercial cow herd."

The bulls speak for themselves! We have had several people see our bulls out grazing and turn around and come back to see if they are for sale. I just say, 'Call Mr. Harvey with Tanner Farms.'

We are weaning calves with eye appeal and good weights. We've purchased four bulls in the last three years and will continue to buy Tanner bulls."

Mason Creek Farms

Jamie Kilgore
Jones County, Mississippi



Tom Burke Kurt Schaff Jeremy Haag

-Sale Managers-

Phone: (816) 532-0811 Fax: (816) 532-0851

World Angus Headquarters

P.O. Box 660

Smithville, Missouri 64089

Address Service Requested

PRST First Class
US Postage
PAID
Boelte-Hall, Inc.
66205

FIRST CLASS MAIL TIME SENSITIVE REQUESTED IN-HOME DATE OF OCTOBER 1, 2014

Tanner Farms

Located 45 min. North of Meridian on Hwy. 45



*From North on Hwy 45 - Go 9.8 miles from 4-way stop at Macon.

Turn left onto Field Road. Continue 1 mile - Sale Barn on left.

* From South on Hwy 45 - Go 10.5 miles from 4-way stop at Scooba.

Turn right onto Field Road. Continue 1 mile - Sale Barn on left.